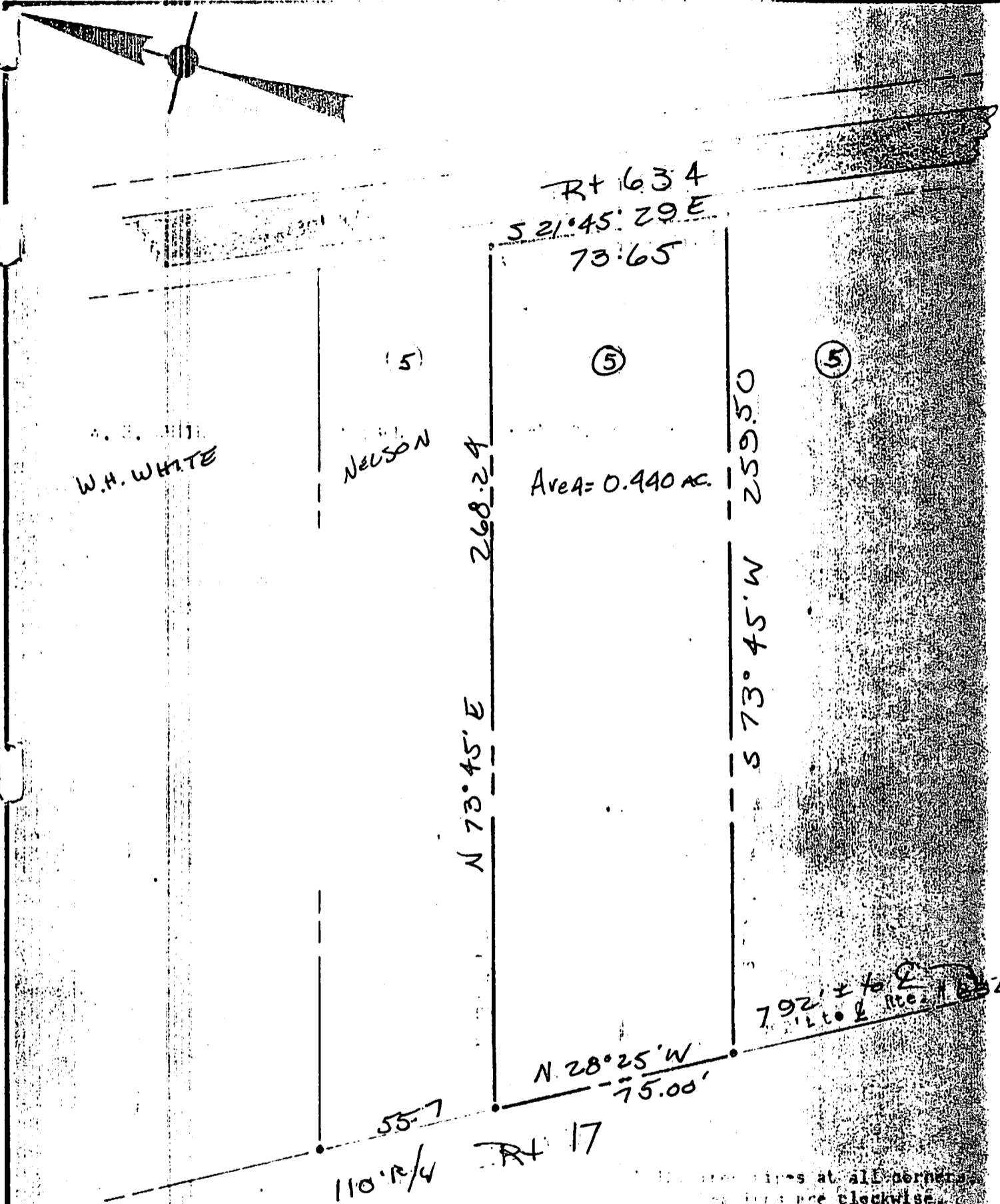


REC W/ DB 174-464



RT 1634
S 21° 45' 29" E
73.65

W.H. WHITE

NELSON

Area = 0.440 AC.

268.24

N 73° 45' E

259.50

S 73° 45' W

N 28° 25' W

75.00

110° R/4

RT 17

792' ± to E
110° R/4

Recorded in the Clerk's Office the 24 day of Sept, 1965

lines at all corners
run clockwise
LINES ARE OCCUPATIONAL
DB 174, p. 464
DB 57 p. 322, DB 394/8f

Teste

MILVILE I. BRYANT, Clerk

PLAT of
THAT PART of
LOT #5

Wm. J. NOTTINGHAM EST
SUBDIVISION

Property of: 9/65
LEO H. SULIK, VIRGINIA

24-187A