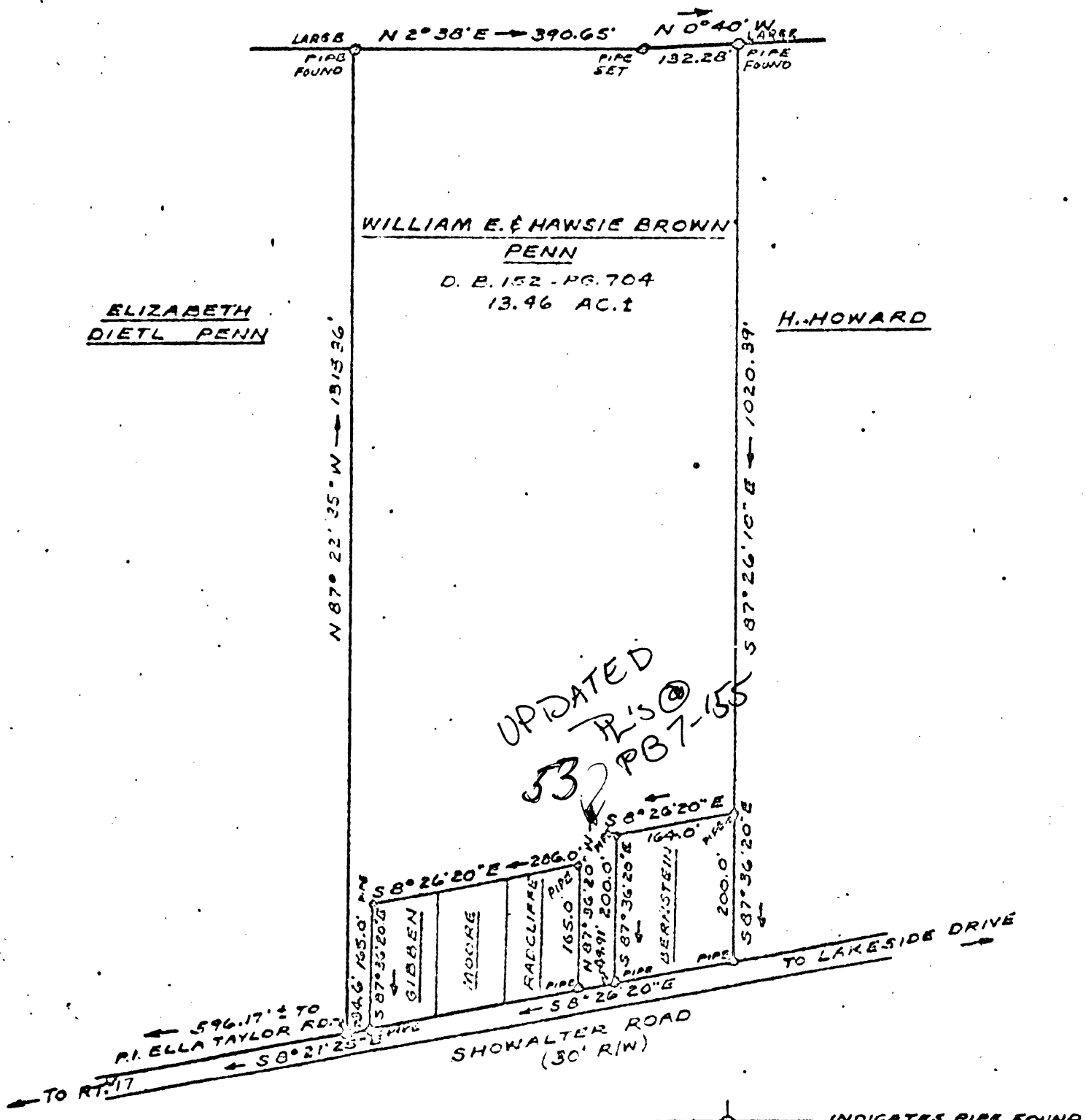
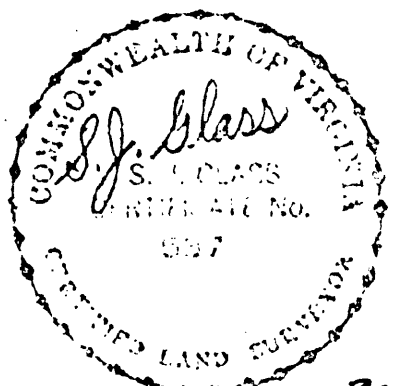


HARWOODS MILL SUBDIVISION
P. B. G. PG. 109



UPDATED
P.L.S. @
532 PB 7-155



30-53

PLAT
SHOWING PROPERTY OF
WILLIAM E. & HAWSIE BROWN PENN

BEING LOCATED ON
SHOWALTER ROAD, GRAFTON DISTRICT
YORK COUNTY, VIRGINIA

SCALE: 1" = 200' AUGUST 20, 1964

S. J. GLASS & ASSOCIATES
ENGINEERING SERVICES - HAMPTON, VIRGINIA

P. F. NO. A-P-46 FIELD WORK BY: CS