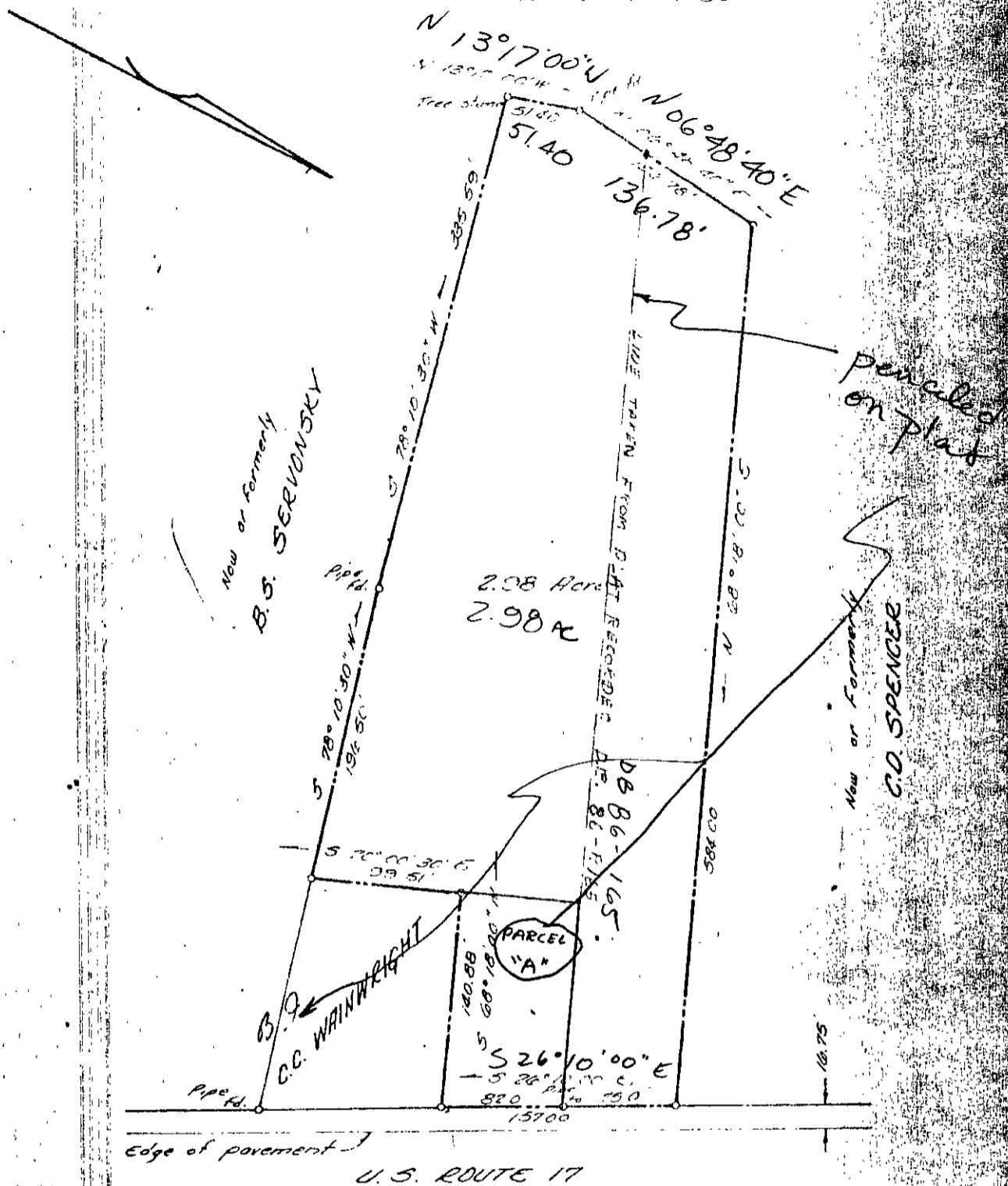


RCD W/ 188327

APPROX. 1843
HANDWRITERS



Ref. (2 Plats) Entitled
 "Plat Tract of Land as conveyed by
 (Mrs.) C.C. Wainwright to B.S.
 Servonsky. Prepared by J.M.
 Cochran, Cert. Civil Eng.
 Dated November 22, 1953
 Boundary as shown by
 B.S. SERVONSKY;

PLAT OF THE PROPERTY OF
 ANN SERVONSKY
 B.S. + FRANCES ANN SERVONSKY
 2.98 AC
 GRAFTON DISTRICT
 CITY, VIRGINIA

ENGINEERS
 VIRGINIA
 DATE JULY 19, 1965

24-156