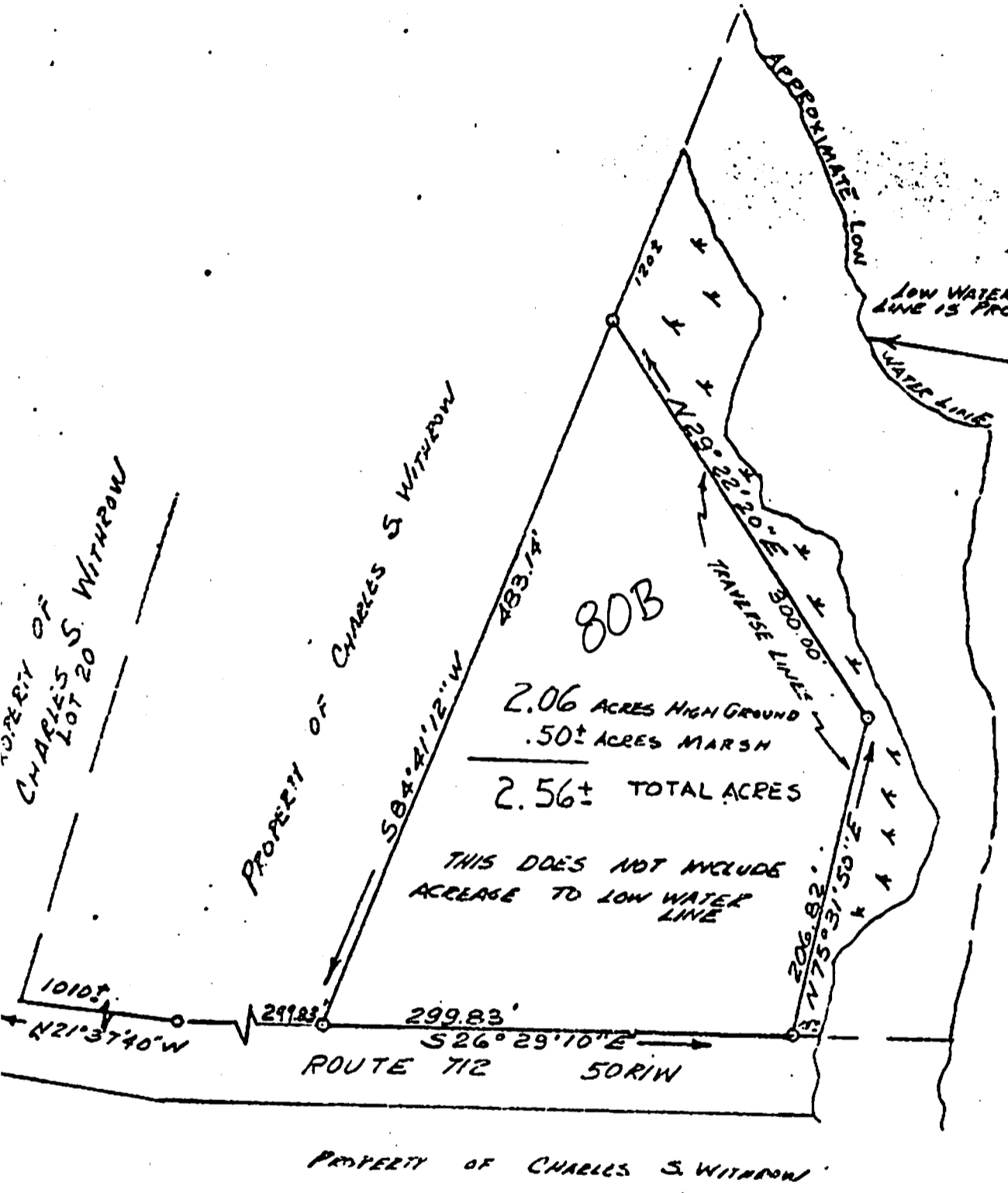


CHESAPEAKE BAY



80B
 2.06 ACRES HIGH GROUND
 .50± ACRES MARSH

 2.56± TOTAL ACRES

THIS DOES NOT INCLUDE
 ACRES TO LOW WATER
 LINE

LEGEND:
 — o — PIPE SET
 x x x MARSH LAND

Thomas N. Hunnicutt III
 THOMAS N. HUNNICUTT III
 CERTIFIED LAND SURVEYOR

PLAT
 SHOWING PART OF CHARLES S. WITHROW
 "BAY TREE FARM" PROPERTY
 TO BE CONVEYED TO
 ANDREW & BETTY L. BECOUVARAKIS
 LOCATED IN
 1"=100' GRAFTON DISTRICT JAN 16, 1967

26-80B