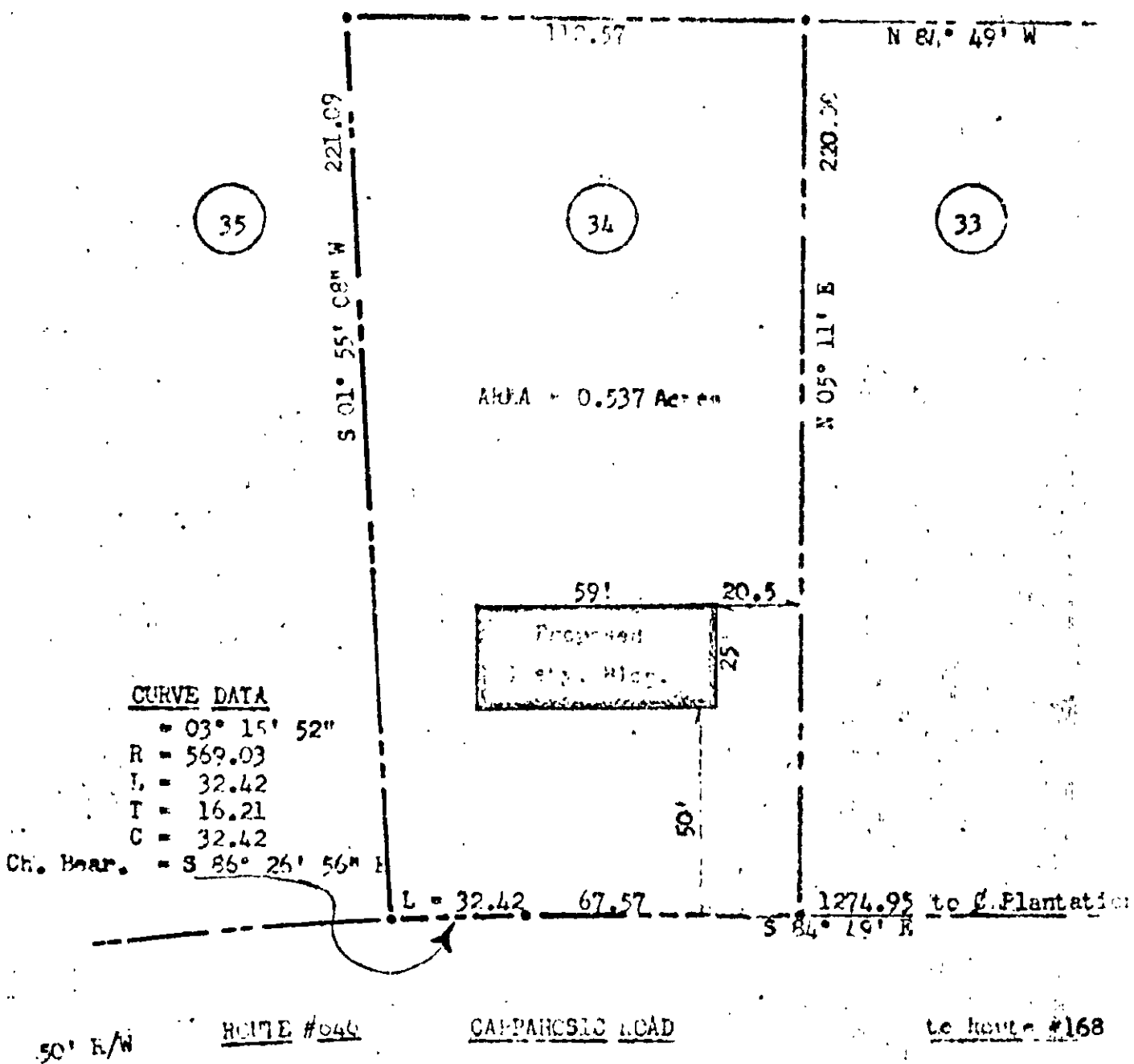


NORTHWEST CORNER



CURVE DATA

= 03° 15' 52"
 R = 569.03
 L = 32.42
 T = 16.21
 C = 32.42
 Ch. Bear. = S 86° 26' 56" E

AREA = 0.537 Acres

Proposed
 59' 20.5'
 25'

50' R/W ROUTE #046 CAMPANUSIC ROAD to ROUTE #168



4" 100' pipes at all corners.
 10' 100' pipes at all corners.

30 @ 34

LOT 34 SEC #
 SCIMMUNO FARMS

INDEPENDENT LIVESTOCK CO. INC.

Oct.

... COUNTY, VIRG