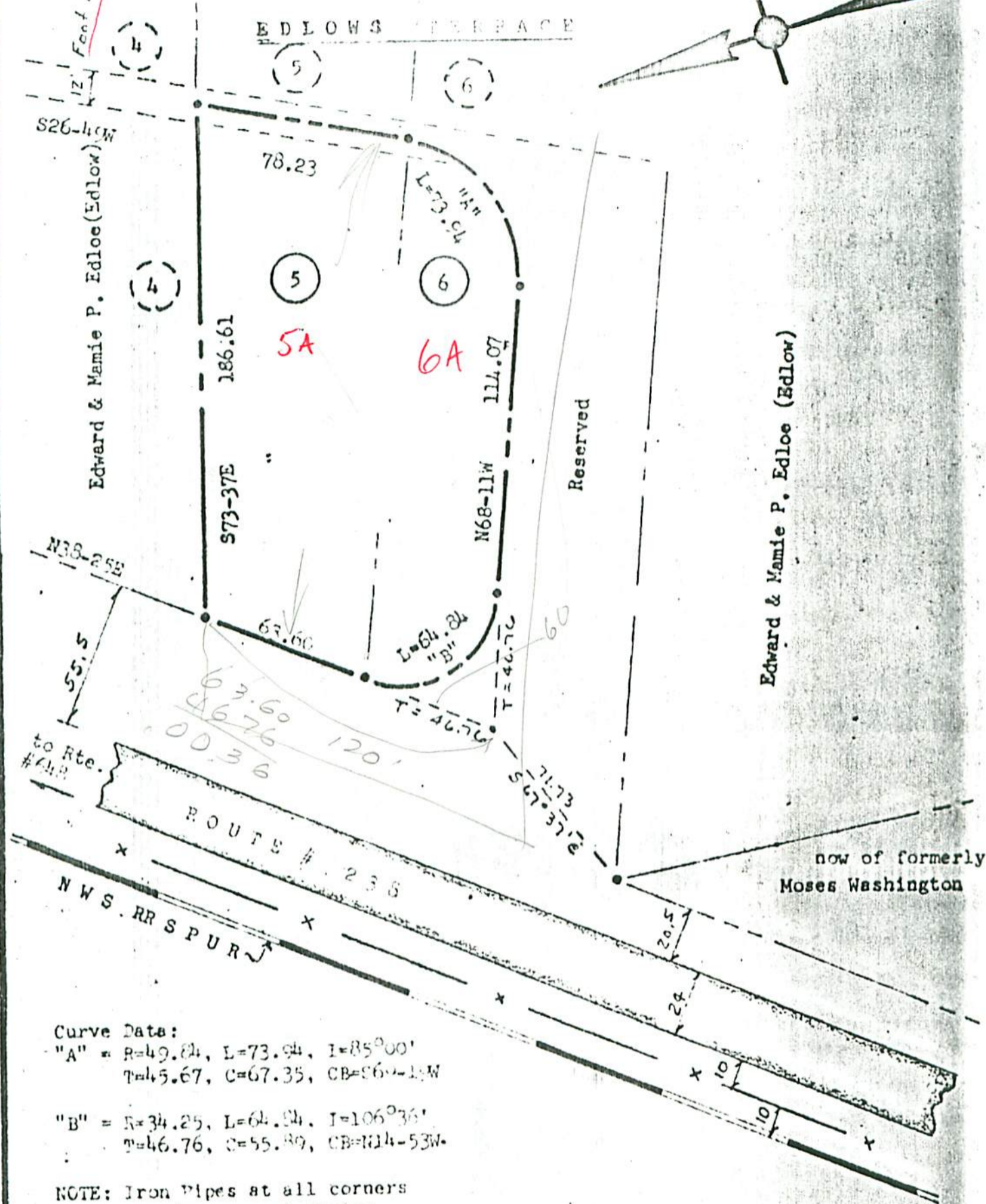


Edward & Mamie P. Edlow (Edlow)

REC'D



Edward & Mamie P. Edlow (Edlow)

now of formerly Moses Washington

Curve Data:
 "A" = R=49.84, L=73.94, I=85°00'
 T=45.67, C=67.35, CB=S69-14W
 "B" = R=34.25, L=64.84, I=106°36'
 T=46.76, C=55.89, CB=N14-53W

NOTE: Iron Pipes at all corners
 Bearings are clockwise
 Ref: DB 61A, P.201
 DB 60, P.264
 DB 127, P.32
 PB 4, P. 36
 Area: 0.490 Acre

Stephen Stephens
 STEPHEN STEPHENS
 CERTIFIED LAND SURVEYOR, 226511

WILLIAMSBURG, VA.

17A (1) 5A + 6A

FLAT OF PART OF
 EDLWS TERRACE
 Property of
 EDWARD & MAMIE P. EDLOW

June 1969

WILLIAMSBURG, YORK COUNTY, VIRGINIA