

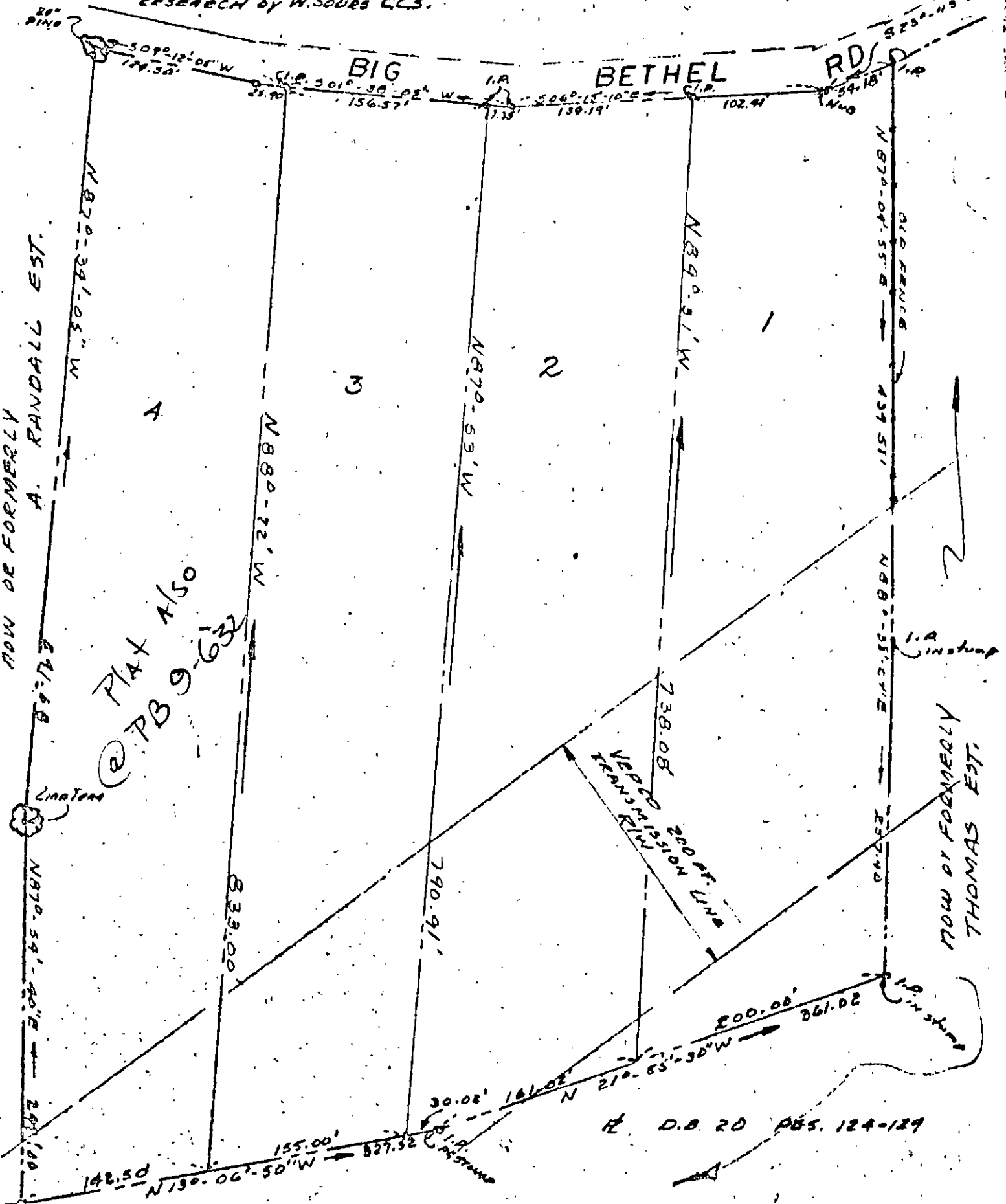
228-178

MAS.

ALL DEED & DEED REFERENCES FROM CLERK'S OFFICE OF CIRCUIT CT. YORK COUNTY, YORKTOWN VA. RESEARCH BY W. SOURS C.L.S.

BOOK 228 PAGE 178

LOT FRONTAGE ON BETHEL RD. AVER 156±



PLAT SHOWING REVISION OF THE DIVISION OF PROPERTY OF THE W.S. HODSON ESTATE YORK COUNTY VA.

BOUNDARY SURVEY BY WM. M. SOURS C.L.S. PLAT BY A.H. ANDREWS C.E.B. OF SUBDIVISION OF LAND

A.H. ANDREWS ENGINEER

DATE: AUG. 1, 1970

SCALE: 1" = 100.00'

37 H (1) ✓

