

839-23

BOOK 687 PAGE 13

RECORD MERIDIAN  
N04°38'30"E

LOT 9

4.00' SET  
FOUND

PART OF LOT 6  
880.0 SQ. FT.

LOT 8

LOT 7

PART OF LOT 6

**APPROVED**

YORK COUNTY BOARD OF SUPERVISORS

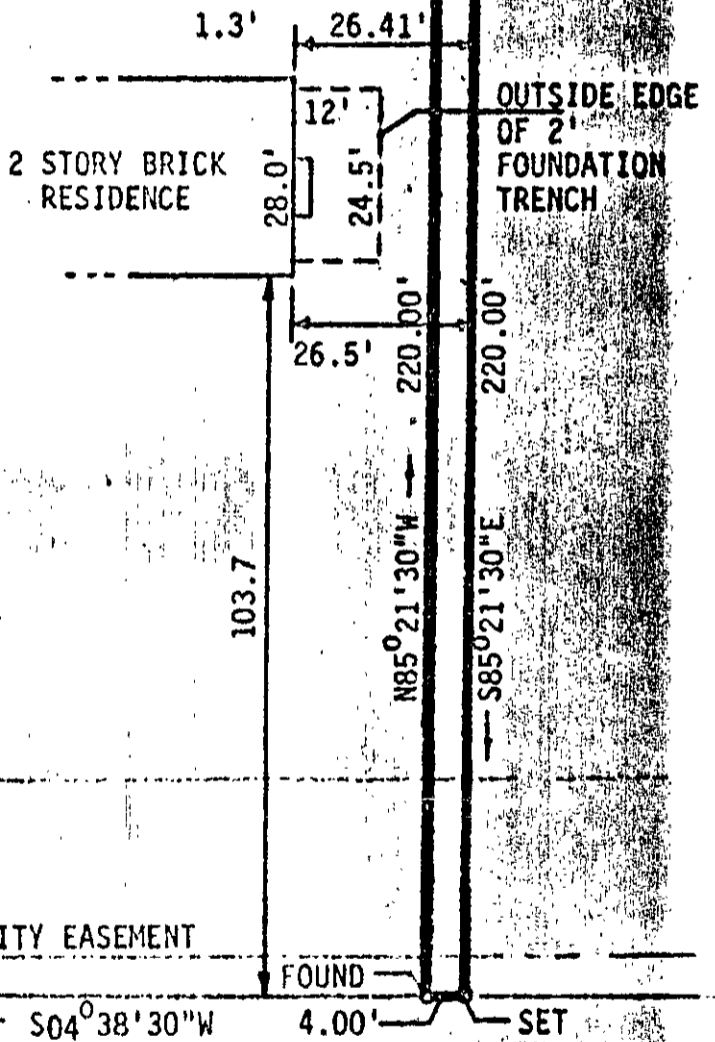
BY *William J. Westbrook*

PLAT APPROVING AGENT.

DATE 11-12-71

VARIATIONS APPROVED

DATE



30' BUILDING LINE

5' DRAINAGE & UTILITY EASEMENT

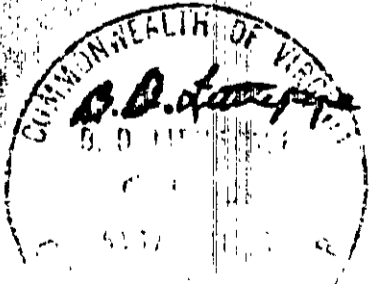
S04°38'30"W 4.00' SET

NOTTINGHAM ROAD

50' R/W

Approved by Building Committee  
*Chas. ...* 11/14/71

7A2 (12) BK 6A



L. V. WOODSON & ASSOCIATES, INC.		DANVILLE, VIRGINIA 23185	
LEGEND	○ - 1" HOLES	---	EASEMENT LINE
A SURVEY OF THE ...		INC. TO	
SCALE 1" = 40'		880.0 SQ. FT.	