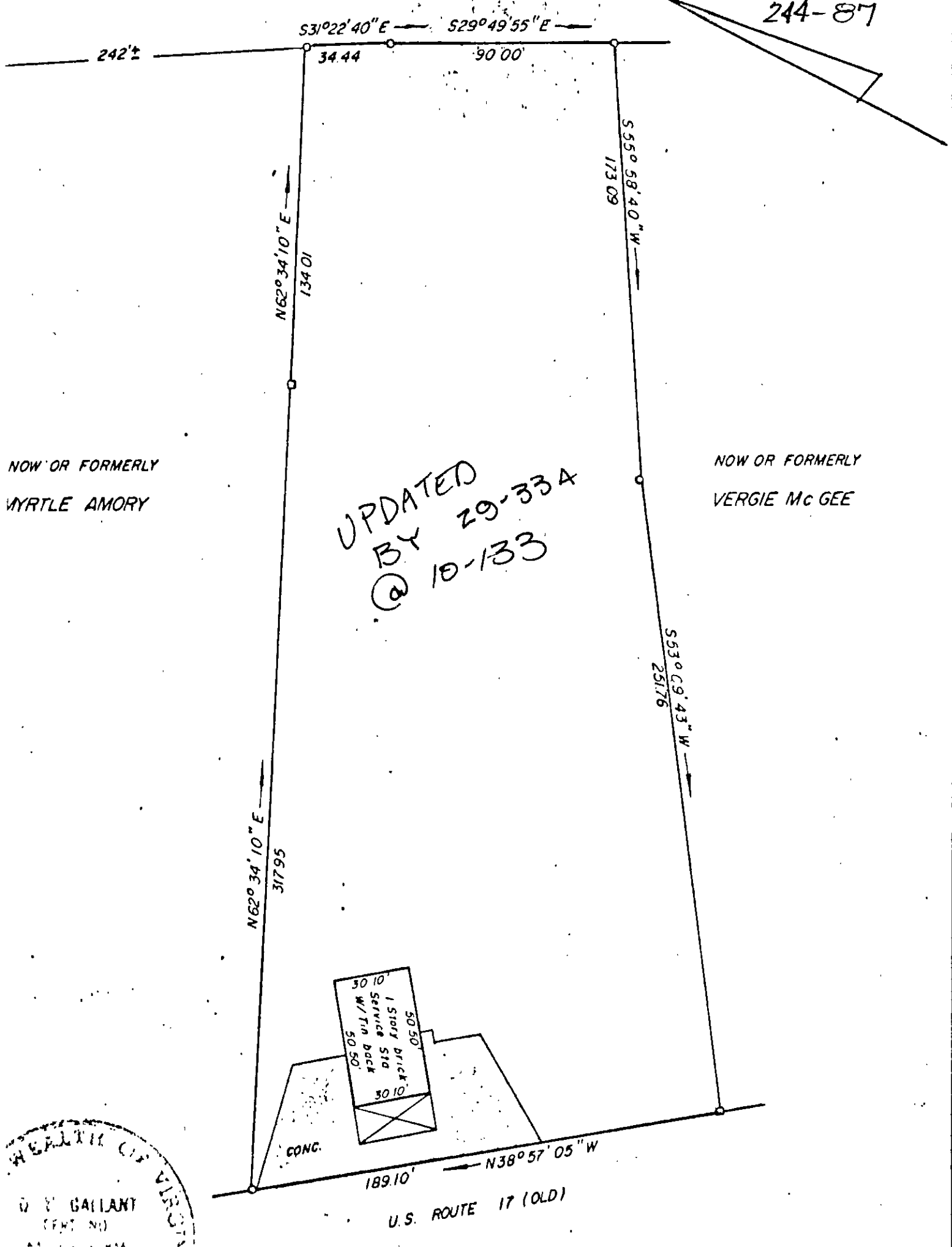


244-87



NOW OR FORMERLY  
MYRTLE AMORY

NOW OR FORMERLY  
VERGIE Mc GEE

UPDATED  
BY 29-33A  
@ 10-133



I CERTIFY THAT THIS PERIMETER SURVEY IS CORRECT TO THE BEST OF MY KNOWLEDGE AND BELIEF, SUBJECT TO EASEMENTS, SERVITUDES AND COVENANTS OF RECORD.

*D. V. Gallant*

PLAT OF THE PROPERTY OF  
DEWEY M. RAGANS & H. HARRIS IRBY JR  
1.54 ACRES  
YORK COUNTY, VIRGINIA

COENEN & ASSOCIATES  
ENGINEERS — PLANNERS — SURVEYORS  
696 J. CLYDE MORRIS BLVD. — NEWPORT NEWS, VIRGINIA