

MAGNETIC MERIDIAN

LENA E. HOGGE ESTATE

S 15° 45' 33" E 141.20'

0.70 ACRES

R.O. OXNER
 LENA E. HOGGE ESTATE

EXIST. PIPE 50.18'
 GRAY. PIPE 100.77'
 N 71° 28' 23" E 234.38'

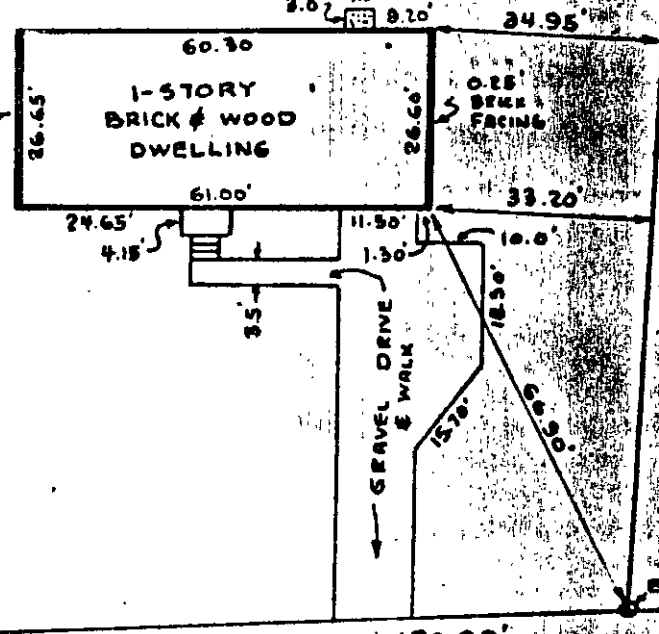
23000'
 S 76° 43' 13" W

LEWIST & SARAH S. TODD

EAVES EXTEND
 4" OVER E-BUILDING
 CLEARS R EXCEPT
 FOR EXTERIOR PORTION
 OF WINDOW FACING
 WHICH IS ON THE LINE

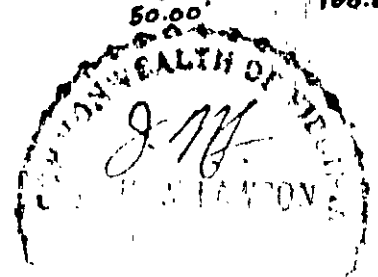
0-25
 BRICK
 FACING

0-25
 BRICK
 FACING



N 17° 49' 47" W 120.00'

DANDY LOOP ROAD
 (R.T.E. # 656)



189 DANDY LOOP ROAD

PART OF THE PROPERTY OF
 FRANCES F. SMITH & MILDRED LOVELLA, SHINER

PART OF THE PROPERTY OF:
 WILLIAM F. HOGGE, JR.

6/20/73
 VIRGINIA

LAND SURVEYOR, N. N. VA.

200① 23

1973
 10/12/73
 10/12/73