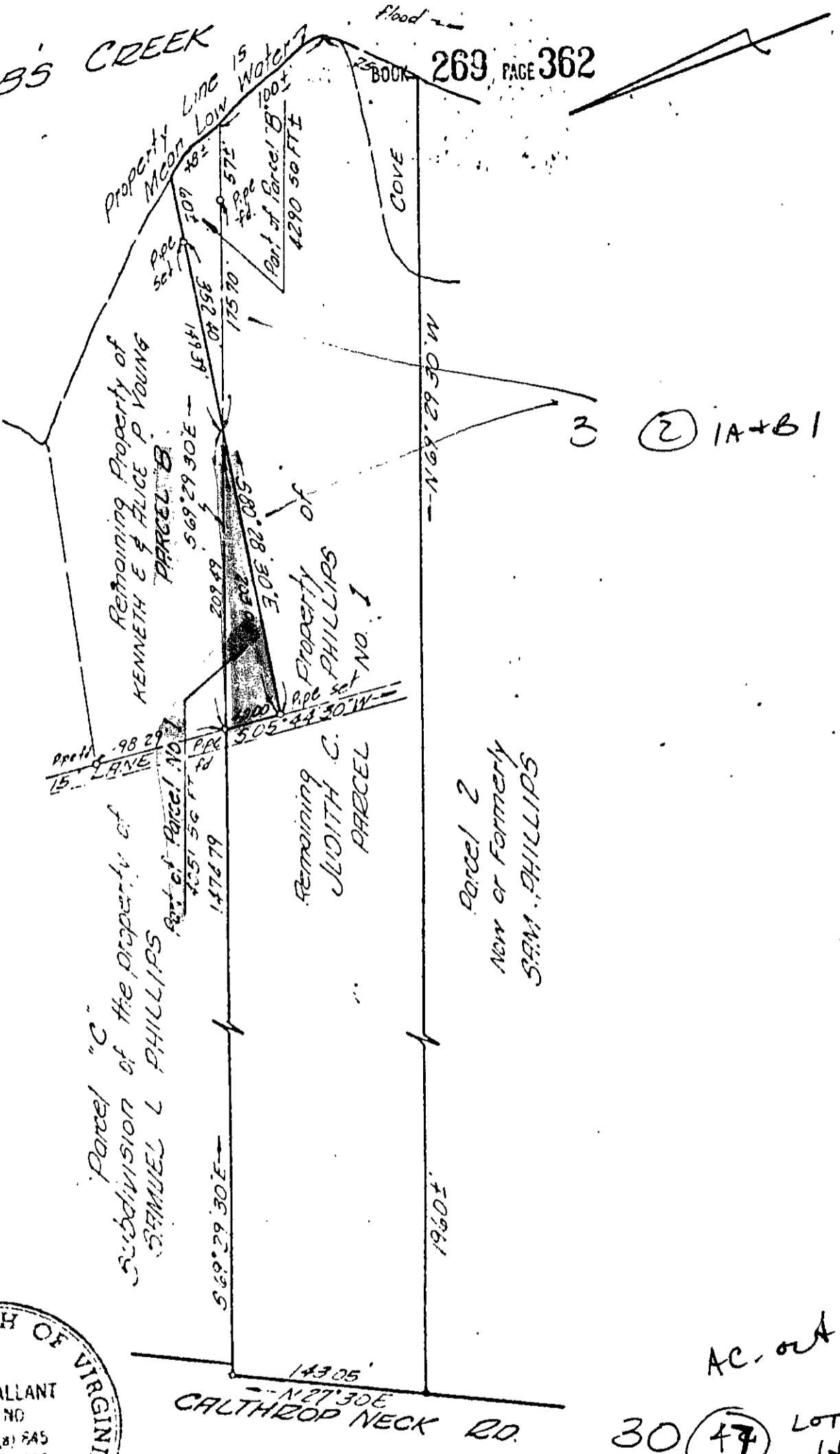


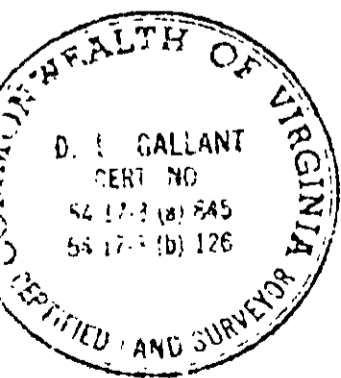
LAMBS CREEK



3 (2) 1A+B1

AC. OUT:

30 (47) LOTS 142



I certify that this perimeter survey is correct to the best of my knowledge and belief, subject to easements, servitudes and covenants of record.

*D. I. Gallant*

PLAT SHOWING  
Part of Parcel "B"  
&  
Part of Parcel No. 1  
SAMUEL L PHILLIPS EST.  
YOCK COUNTY, VIRGINIA

COENEN & ASSOCIATES  
ENGINEERS — PLANNERS — SURVEYORS