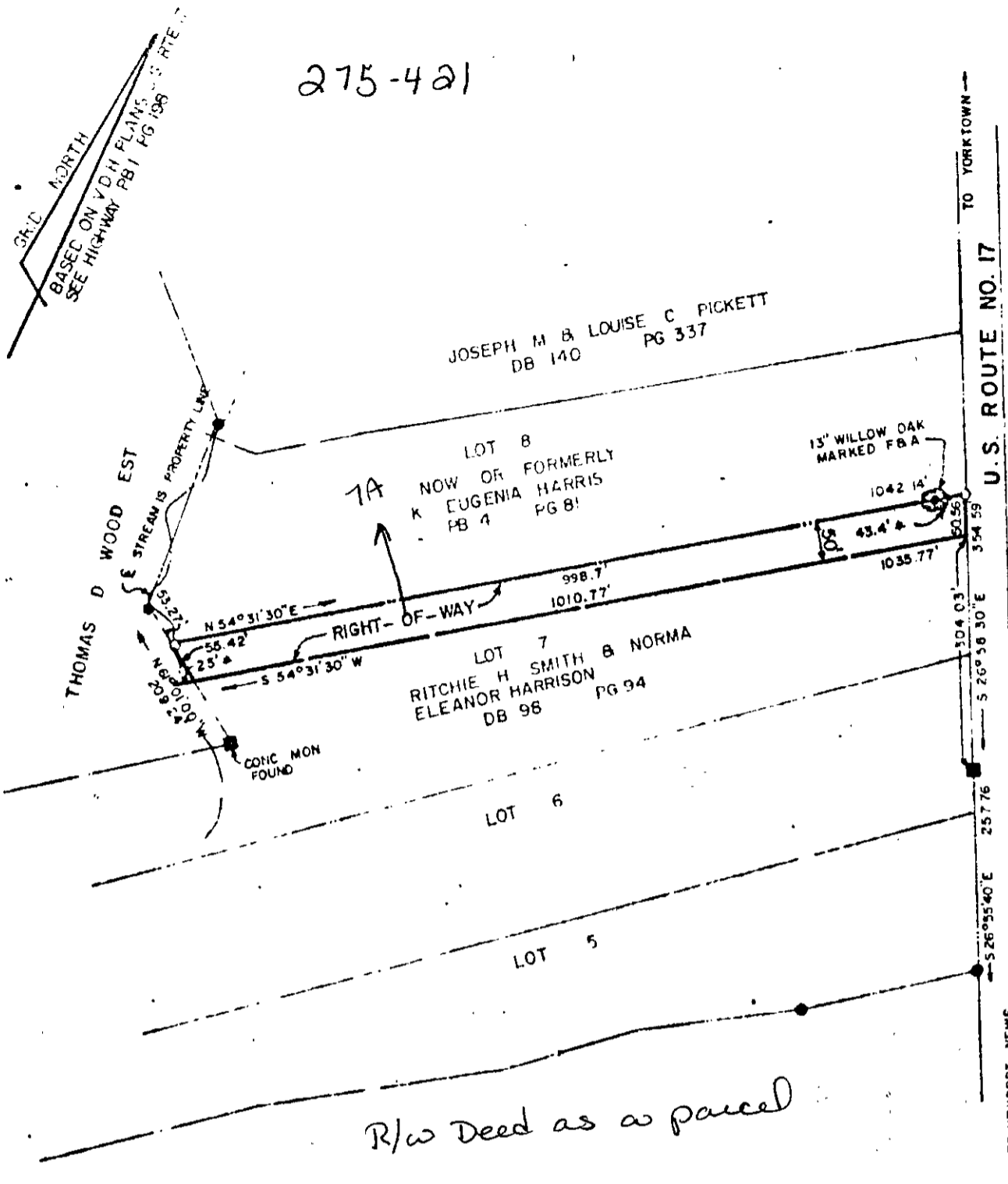


275-421



Plat showing 50' Right-of-Way to  
 Property of Thomas D. Wood Estate  
 Nelson District  
 York County, Virginia

Murray & Dischinger - Engineers  
 Scale 1" = 200'  
 October 15, 1974

- LEANING V.D.H. MONUMENT FOUND
- PIPE FOUND
- PIPE SET

REFERENCE PG. 1 TO 21  
 also shown @  
 372-372  
 24C ① 7A

AREA OF 50' R/W = 1.20±

PLAT SHOWING	
50' RIGHT-OF-WAY TO PROPERTY OF THOMAS D. WOOD EST NELSON DISTRICT YORK COUNTY, VIRGINIA	
Murray & Dischinger - Engineers Newport News & Hampton, Virginia	
Scale 1" = 200'	Revisions
October 15, 1974	

HUGH C. DISCHINGER, ENGINEER