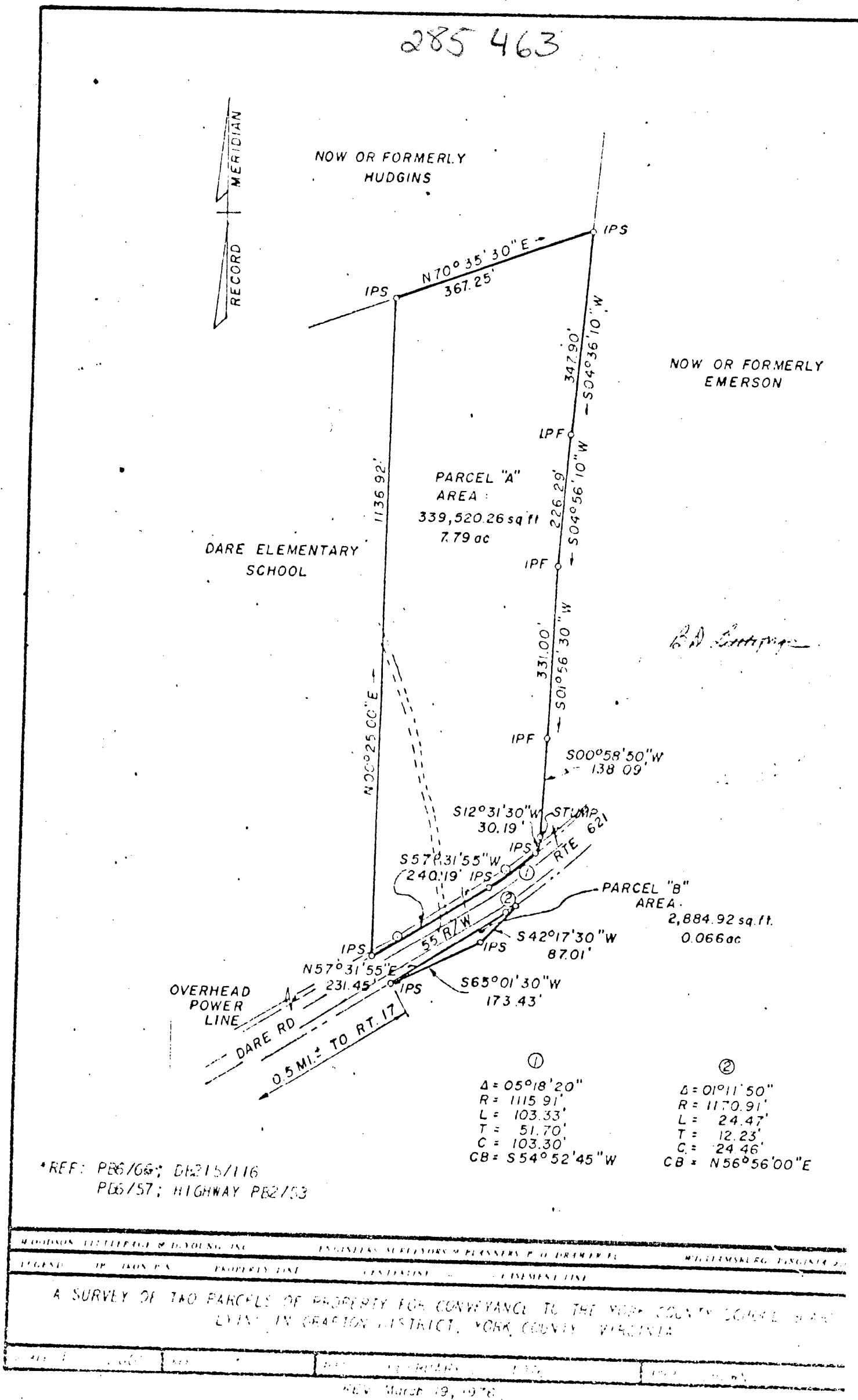


285 463



*REF: PG6/66; DE215/116
 PG6/57; HIGHWAY PG2/53

HODGSON, LITTLEFIELD & D'YOUNG, INC. ENGINEERS, SURVEYORS & PLANNERS P. O. BOX 1111 WILHELMSBURG, VIRGINIA 23187
 LEGEND: IP IRON P.S. PROPERTY LINE CENTERLINE CEMENT LINE

A SURVEY OF TWO PARCELS OF PROPERTY FOR CONVEYANCE TO THE YORK COUNTY SCHOOL BOARD LYING IN GRAYSON DISTRICT, YORK COUNTY, VIRGINIA

DATE	BY	REV.	REVISION

REV. March 19, 1976

29-30-1A ✓