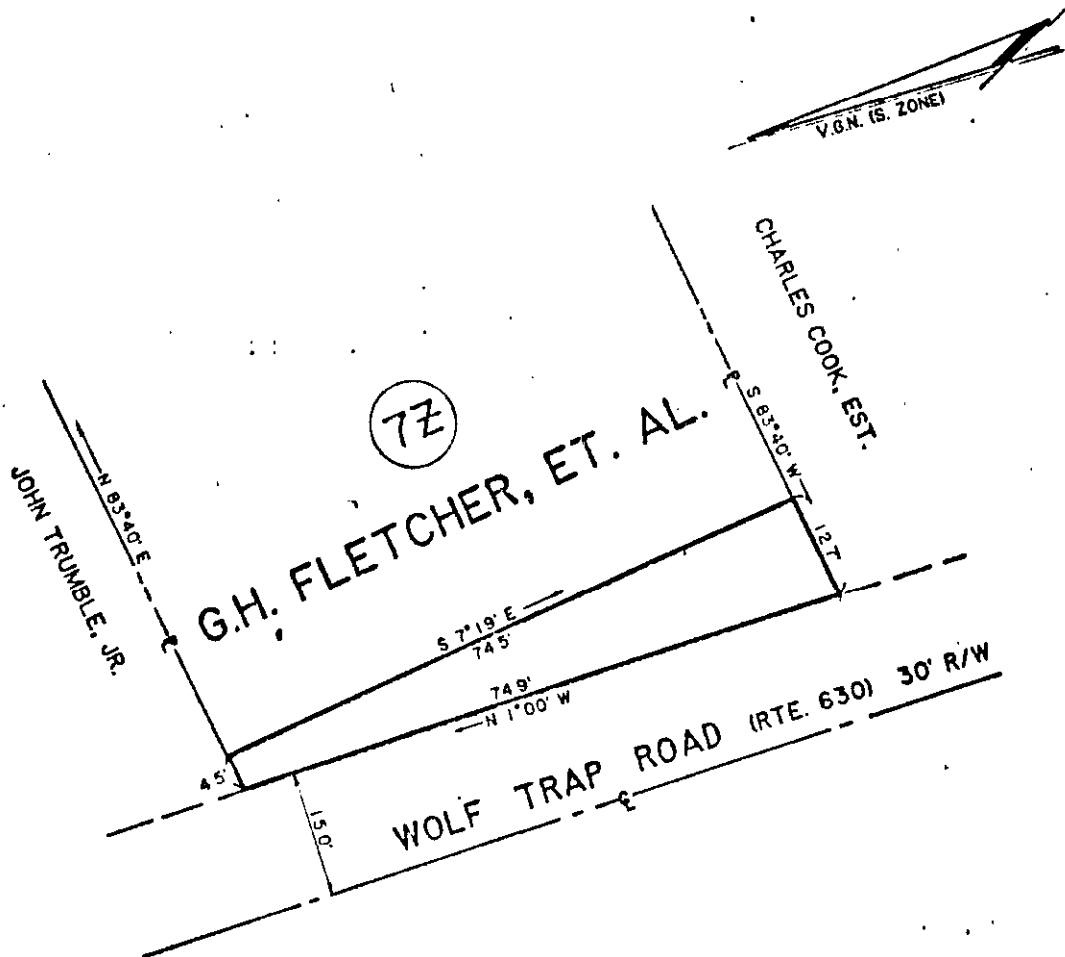


381-52  
 BOOK 561 PAGE 52

# 566.65



Surveyed by  
 CARROUTH & ASSOCIATES, INC.

<b>VIRGINIA ELECTRIC AND POWER CO.</b>		
<b>YORKTOWN P.S. HAUL ROAD</b>		
PLAT TO ACCOMPANY AGREEMENT WITH <b>G.H. FLETCHER, ET. AL.</b>		
DISTRICT - TOWNSHIP NELSON	COUNTY YORK	STATE VA.
SCALE: 1 INCH = 20 FT.		SURVEYED BY CARROUTH & ASSOC
DRAWN BY L.D.H.	DATE 3/30/83	NO. 7Z

SHEET NO. DRAWER NO.

0.01 AC.

REVISIONS

4	3	2	1
---	---	---	---

BRUNING 44-132 23062

JN. 480018

24-261