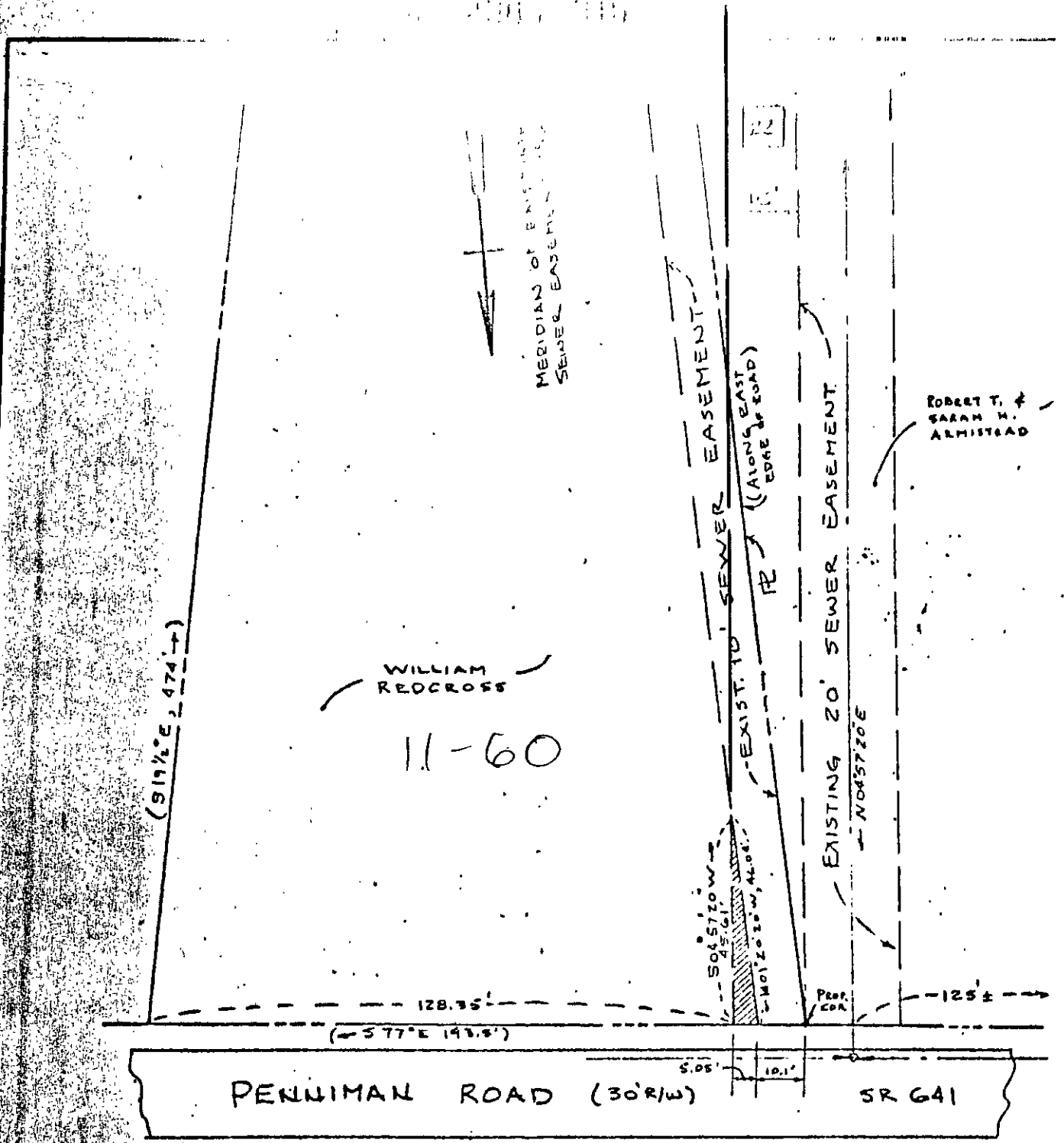


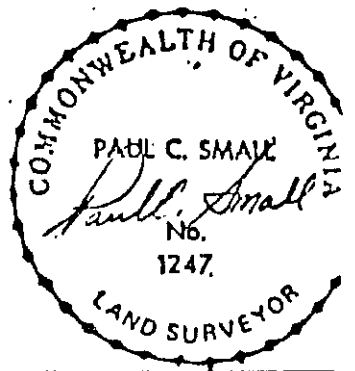
430-315



ROBERT T. & SARAH H. ARMISTEAD

SANITARY DISTRICT NO. 1  
CONTRACT NO. 83-02 PART-B  
SHEET NO. 7

EASEMENT AREA: 115 ±  
SIZE: VARIABLE  
TAX PARCEL: 11-60  
SOURCE OF TITLE: DB.64, PG.185  
REFERENCES: EXISTING EASEMENT  
PLATS BY GRIFFITH & CARROLL



THIS PLAT WAS PREPARED FROM AVAILABLE RECORDED INFORMATION AND CONTROLLED SURVEYS. PROPERTY LINES, UNLESS SPECIFICALLY CALLED OUT ON THIS PLAT WERE NOT VERIFIED BY ACTUAL FIELD SURVEY.

Revised Area 3/25/81 PCS

AES, a professional corporation architects, engineers, surveyors, and planners Williamsburg, Virginia

### DRAINAGE & UTILITY EASEMENT

FOR CONVEYANCE FROM: WILLIAM REDCROSS  
FOR CONVEYANCE TO: COUNTY OF YORK VIRGINIA

YORK COUNTY

VIRGINIA

Scale: 1"=30'	REL: SANITARY DISTRICT NO. 1	Date: DEC. 1983	Job No.: 6207	23
---------------	------------------------------	-----------------	---------------	----

11-60