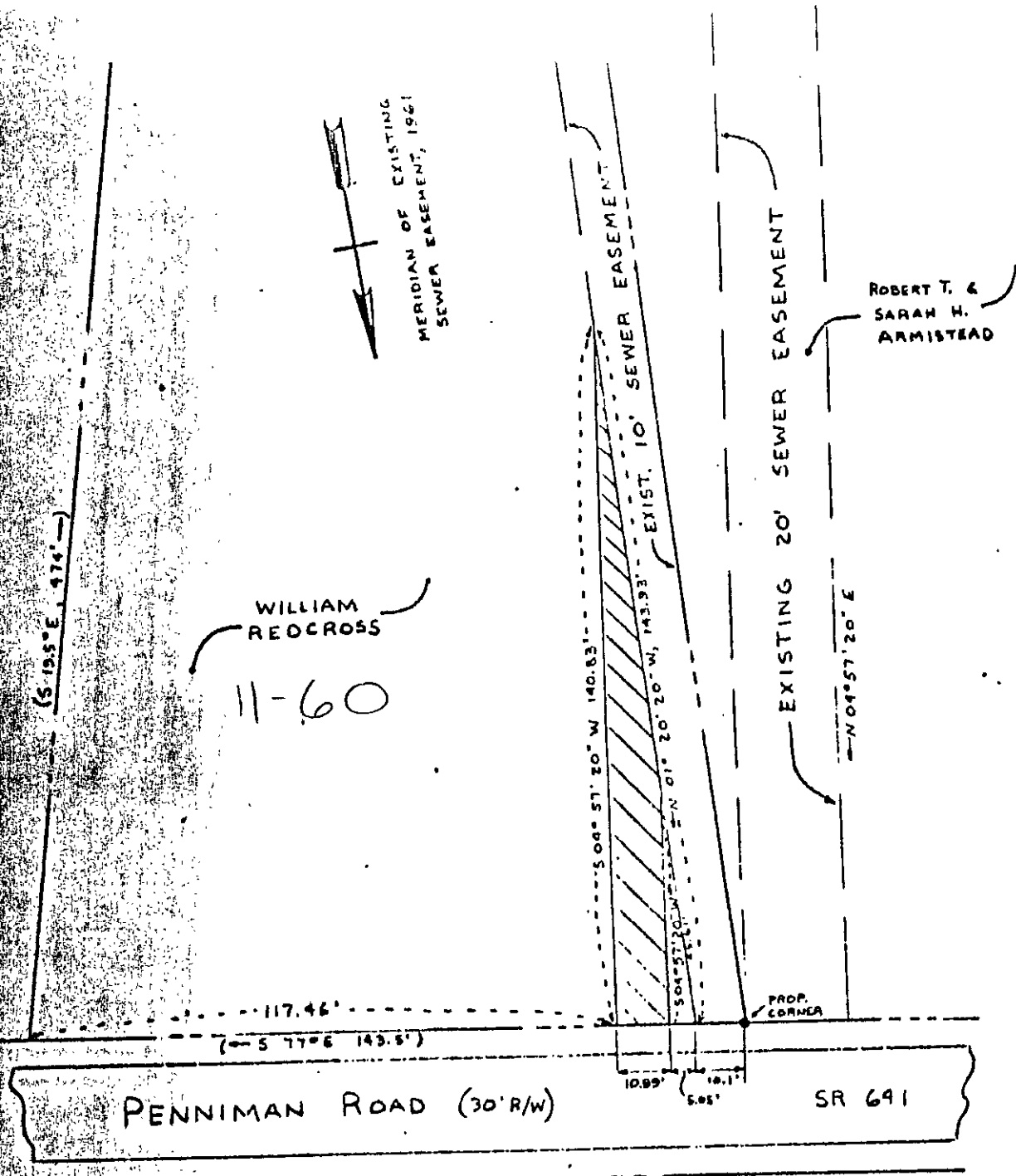


430-316

11-60



WILLIAM REDCROSS
11-60

ROBERT T. & SARAH H. ARMISTEAD

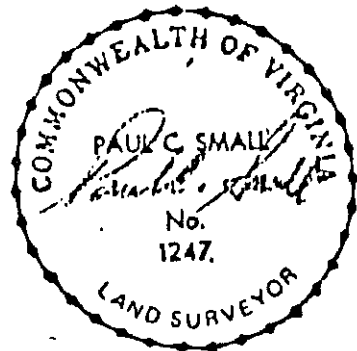
PENNIMAN ROAD (30' R/W)

SR 691

SANITARY DISTRICT NO. 1
CONTRACT NO. 83-02 PART-B
SHEET NO. 7

EASEMENT AREA: 996 sq ft
SIZE: VARIABLE
TAX PARCEL: 11-60
SOURCE OF TITLE: D.B. 69, PG. 485
REFERENCES: 1) EXISTING EASEMENT PLATS BY GRIFFITH & CARROL
2) EXISTING EASEMENT PLAT BY AES (DEC. 1983)

THIS PLAT WAS PREPARED FROM AVAILABLE RECORDED INFORMATION AND CONTROLLED SURVEYS. PROPERTY LINES, UNLESS SPECIFICALLY CALLED OUT ON THIS PLAT WERE NOT VERIFIED BY ACTUAL FIELD SURVEY.



AES, a professional corporation engineers, surveyors, planners Williamsburg, Virginia

DRAINAGE & UTILITY EASEMENT

FOR CONVEYANCE FROM: WILLIAM REDCROSS
FOR CONVEYANCE TO: COUNTY OF YORK VIRGINIA

YORK COUNTY

VIRGINIA

Scale: 1" = 30'

Ref.: SA...

JUL 1985

JLB No. 5207 23-A

11-60