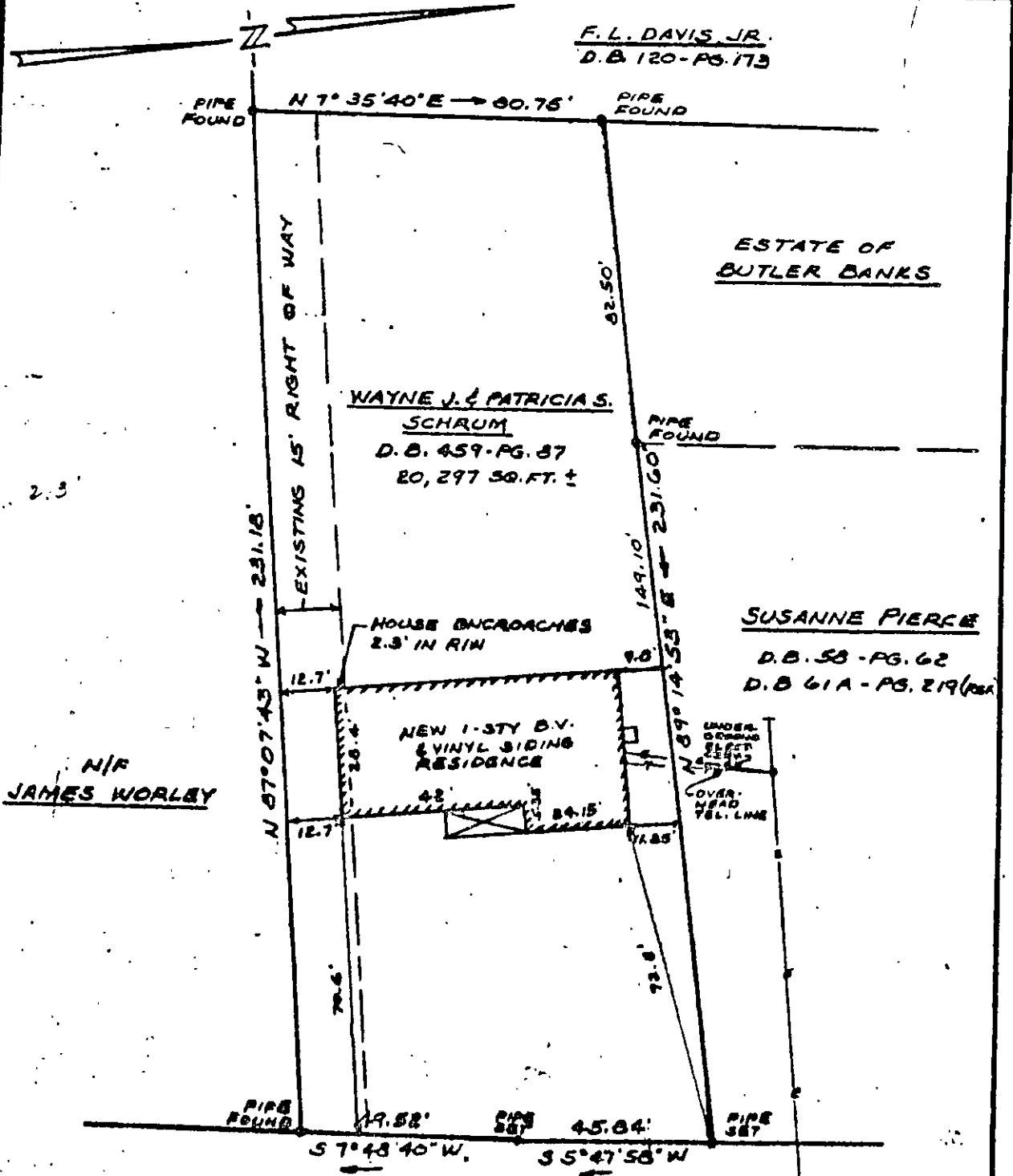


F. L. DAVIS JR.
D.B. 120-PG. 173



N/R JAMES WORLEY

ESTATE OF BUTLER BANKS

WAYNE J. & PATRICIA S. SCHRUM
D.B. 459-PG. 87
20,297 SQ. FT. ±

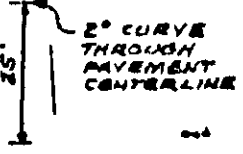
SUSANNE PIERCE
D.B. 58-PG. 62
D.B. 61A-PG. 219 (REV)

TO STATE ROUTE 134

BIG BETHEL ROAD (VARIABLE R/W)

TO STATE ROUTE 171

- REFERENCES:
 P.O.B. - PG. 233
 D.B. 58 - PG. 63
 D.B. 243 - PG. 772
 D.B. 244 - PGS. 299 (399)
 HWY. P.B. 3 - PG. 534



PLAT
 SHOWING PROPERTY OF
 WAYNE J. & PATRICIA S. SCHRUM
 BEING LOCATED ON BIG BETHEL ROAD
 BETHEL DISTRICT
 YORK COUNTY, VIRGINIA
 SCALE: 1" = 30'
 REVISED 3-10-87
 JANUARY 21, 1987
 S. J. GLASS & ASSOCIATES
 ENGINEERS & SURVEYORS - EMERYTON, VIRGINIA
 P. O. BOX 6097 NEW YORK, N.Y. 10116

87-A

REF. 65-67) D-172