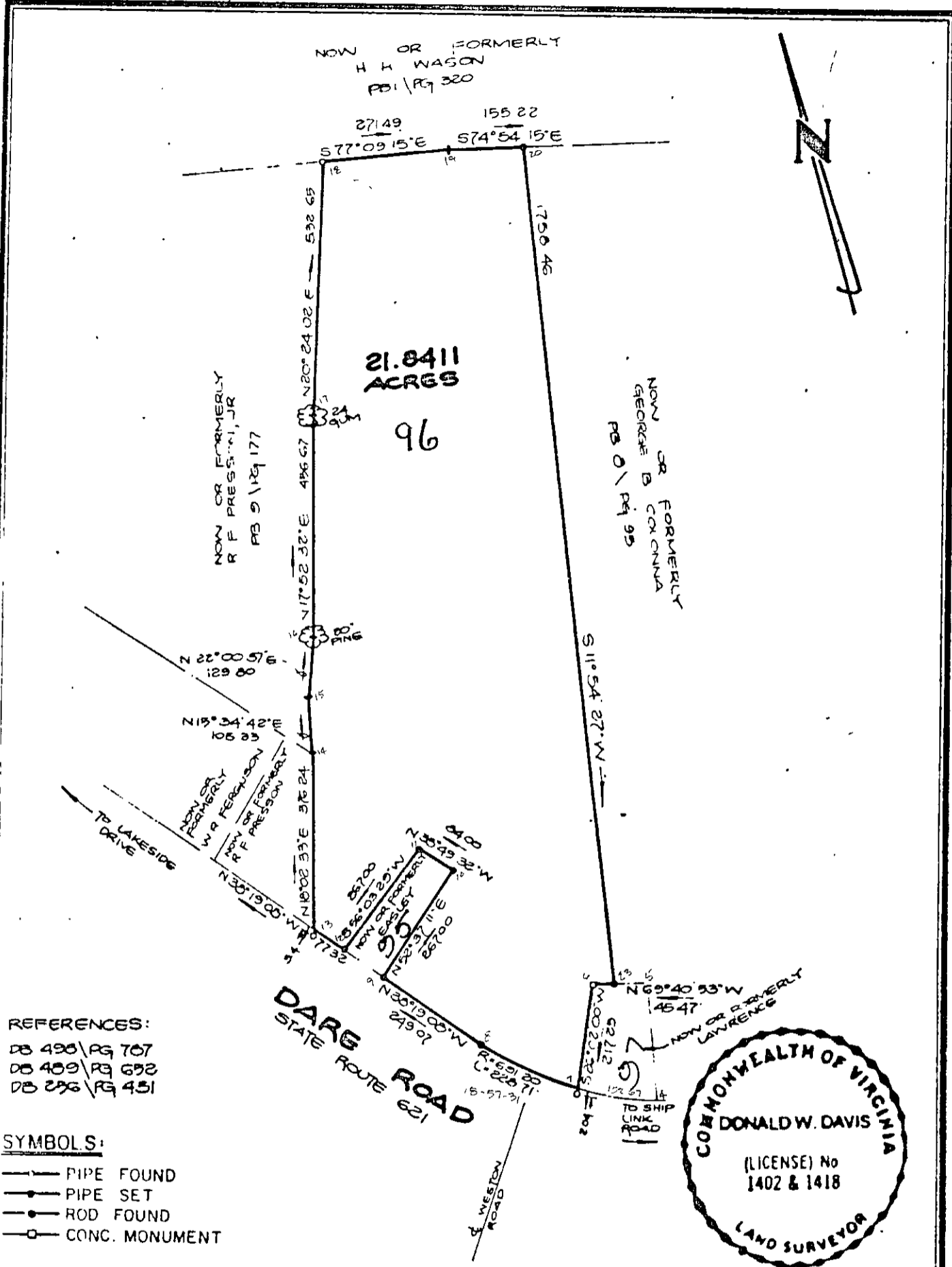
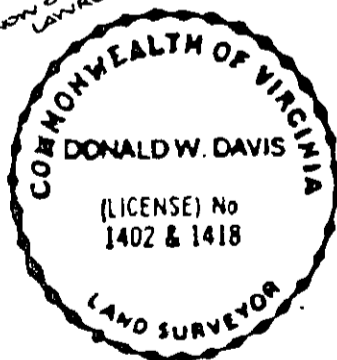


AF 47133A



REFERENCES:
 DB 496 / PG 707
 DB 489 / PG 692
 DB 296 / PG 451

SYMBOLS:
 ——— PIPE FOUND
 —●— PIPE SET
 —○— ROD FOUND
 —□— CONC. MONUMENT



Donald W. Davis
 HEREBY CERTIFY THAT THE SURVEY REPRESENTED BY THIS PLAT WAS MADE BY ME ON THIS DATE AND IS CORRECT TO THE BEST OF MY KNOWLEDGE AND BELIEF THERE ARE NO ENCROACHMENTS OF BUILDINGS UNLESS SHOWN HEREON.
 DAVIS & ASSOCIATES
 SURVEYORS & PLANNERS
 YORK COUNTY, VIRGINIA

JOB LOCATION DARE ROAD - STATE ROUTE 621
 PLAT OF THE PROPERTY TO BE CONVEYED TO :
DARE WOODS LAND TRUST
 PARCEL OF LAND
 CONTAINING 21.8411 ACRES
 GRAFTON DISTRICT
 COUNTY OF YORK, VA.
 DB 496 / PG 707

CODE: 88-420 DWNLDY-NB SCALE: 1" = 250' TO: LASSEN DATE: 12 JULY 08

30-96V