

24 (48) - B
24 (48) - A, A1

G7S

BK 1067PG0574

JO # 6621

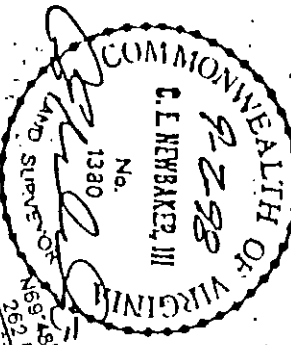
PLAT OF ADDITIONAL LAND OF

BURNT BRIDGE RUN CONDOMINIUM

GRAFTON DISTRICT - COUNTY OF YORK, VIRGINIA
SCALE: 1" = 200' SEPTEMBER 2, 1998

THE SIRINE GROUP, LTD.

SURVEYORS • ENGINEERS • PLANNERS
4794 GEORGE WASHINGTON MEMORIAL HIGHWAY
U.S. ROUTE 17 - P.O. BOX 450
WHITE MARSH, VIRGINIA 23183



NOW OR FORMERLY
MARY HARRIS ESTATE
(D.B. 18, P. 166)

NOW OR FORMERLY
NEWPORT NEWS WATERWORKS

PUMP
STATION
SITE

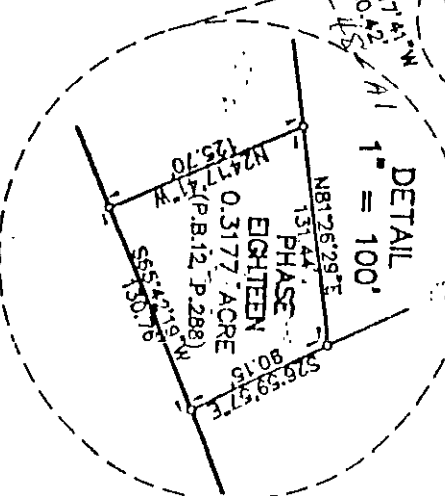
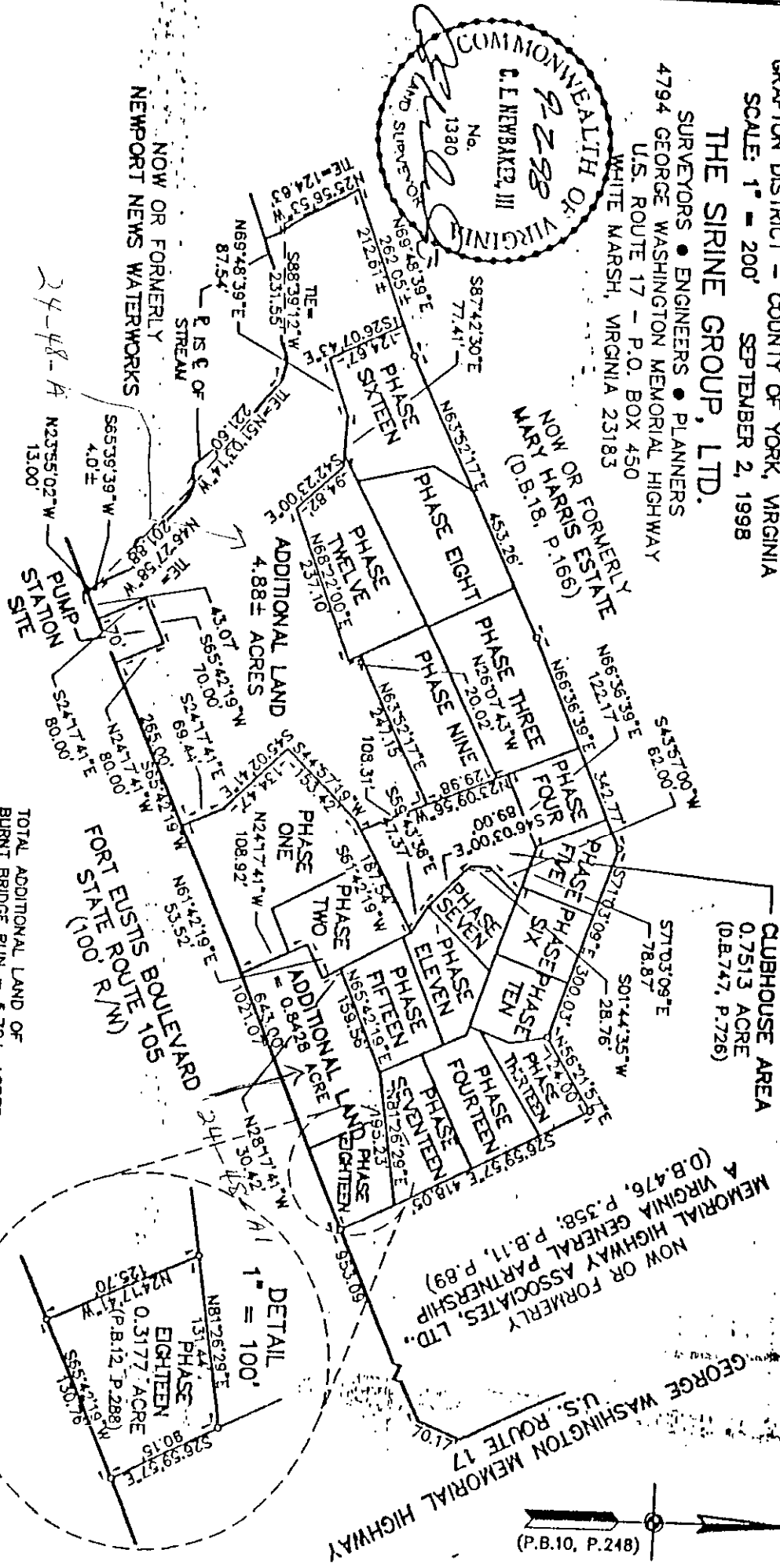
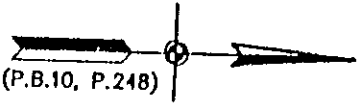
TOTAL ADDITIONAL LAND OF
BURNT BRIDGE RUN = 5.72± ACRES

24-48-B

CLUBHOUSE AREA
0.7513 ACRE
(D.B. 747, P. 726)

NOW OR FORMERLY
MEMORIAL HIGHWAY GENERAL PARTNERSHIP
& VIRGINIA ASSOCIATES LTD.
(D.B. 476, P. 358; P.B. 11, P. 89)

GEORGE WASHINGTON MEMORIAL HIGHWAY
U.S. ROUTE 17
(P.B. 10, P. 248)



9-2-98

FILE 6621-5, DISK 207C