

**PLAT SHOWING  
BOUNDARY LINE ADJUSTMENT  
BETWEEN LOT 2  
SUBDIVISION OF THE PROPERTY OF  
HATTIE MAE BANKS MIDDLETON, ET AL  
AND A PARCEL OF LAND  
OWNED BY  
VICTORY CHRISTIAN CENTER TRUSTEES  
BETHEL DISTRICT - YORK COUNTY, VIRGINIA**

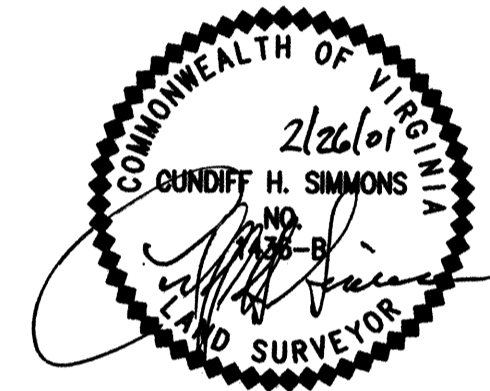
FEBRUARY 26, 2001

SHEET 2 OF 2

**Simmons Newsome, P.C.**  
Engineers Surveyors Planners  
110A Dare Road  
Yorktown, Virginia 23692  
Phone (757) 898-4914 Fax (757) 898-4914

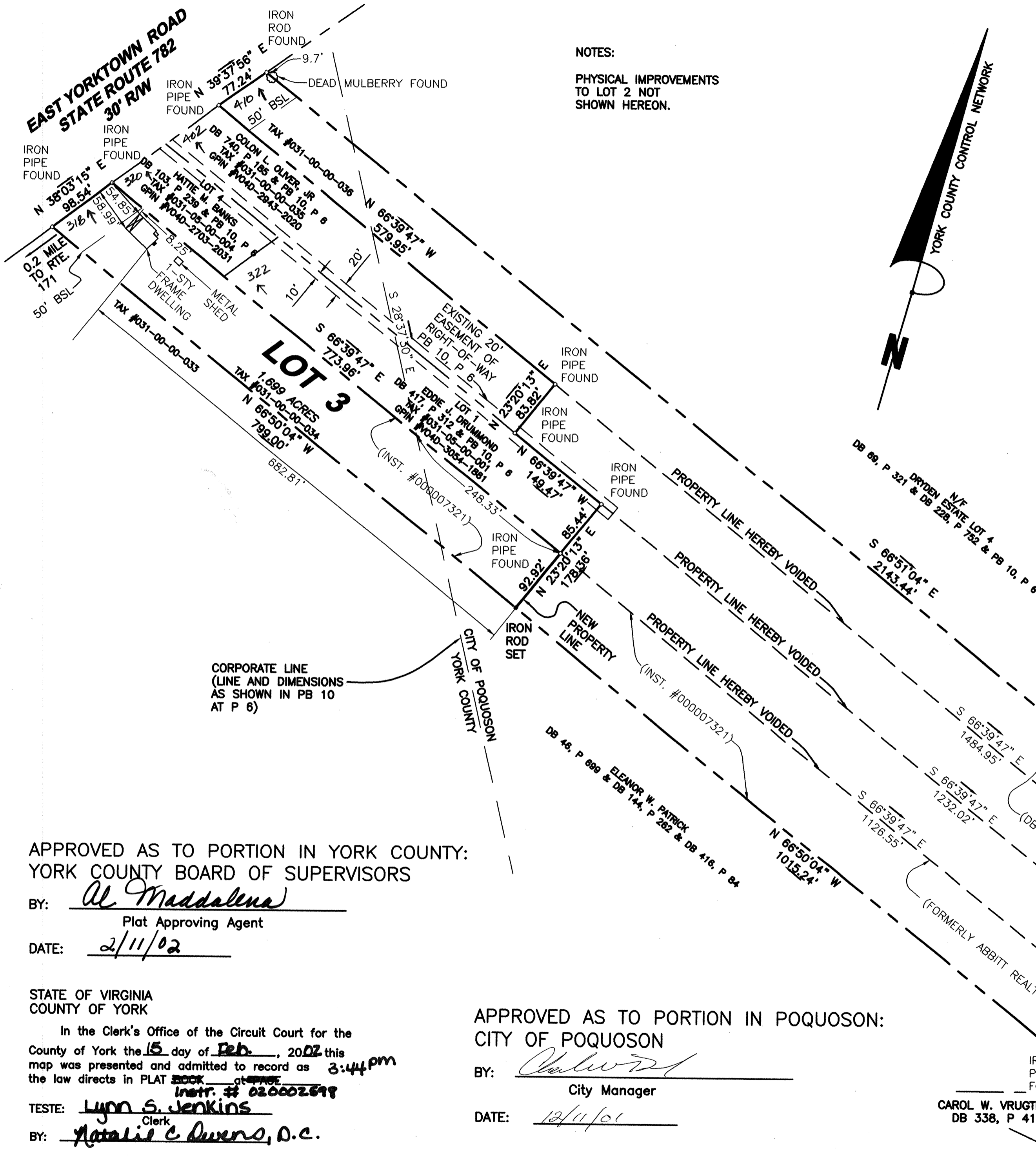


SCALE: 1" = 100'



- LEGEND**
- IRON ROD/PIPE FOUND
  - IRON ROD SET
  - RPA=RESOURCE PROTECTION AREA
  - RMA=RESOURCE MANAGEMENT AREA

**NOTES:**  
PHYSICAL IMPROVEMENTS  
TO LOT 2 NOT  
SHOWN HEREON.



APPROVED AS TO PORTION IN YORK COUNTY:  
YORK COUNTY BOARD OF SUPERVISORS

BY: Al Maddalena  
Plat Approving Agent

DATE: 2/11/02

STATE OF VIRGINIA  
COUNTY OF YORK

In the Clerk's Office of the Circuit Court for the  
County of York the 15 day of Feb, 2002 this  
map was presented and admitted to record as 3:44 pm  
the law directs in PLAT BOOK at PAGE  
Instr. # 020002698

TESTE: Lynn S. Jenkins  
Clerk  
BY: Natalie C. Owens, D.C.

APPROVED AS TO PORTION IN POQUOSON:  
CITY OF POQUOSON

BY: [Signature]  
City Manager

DATE: 2/11/02