

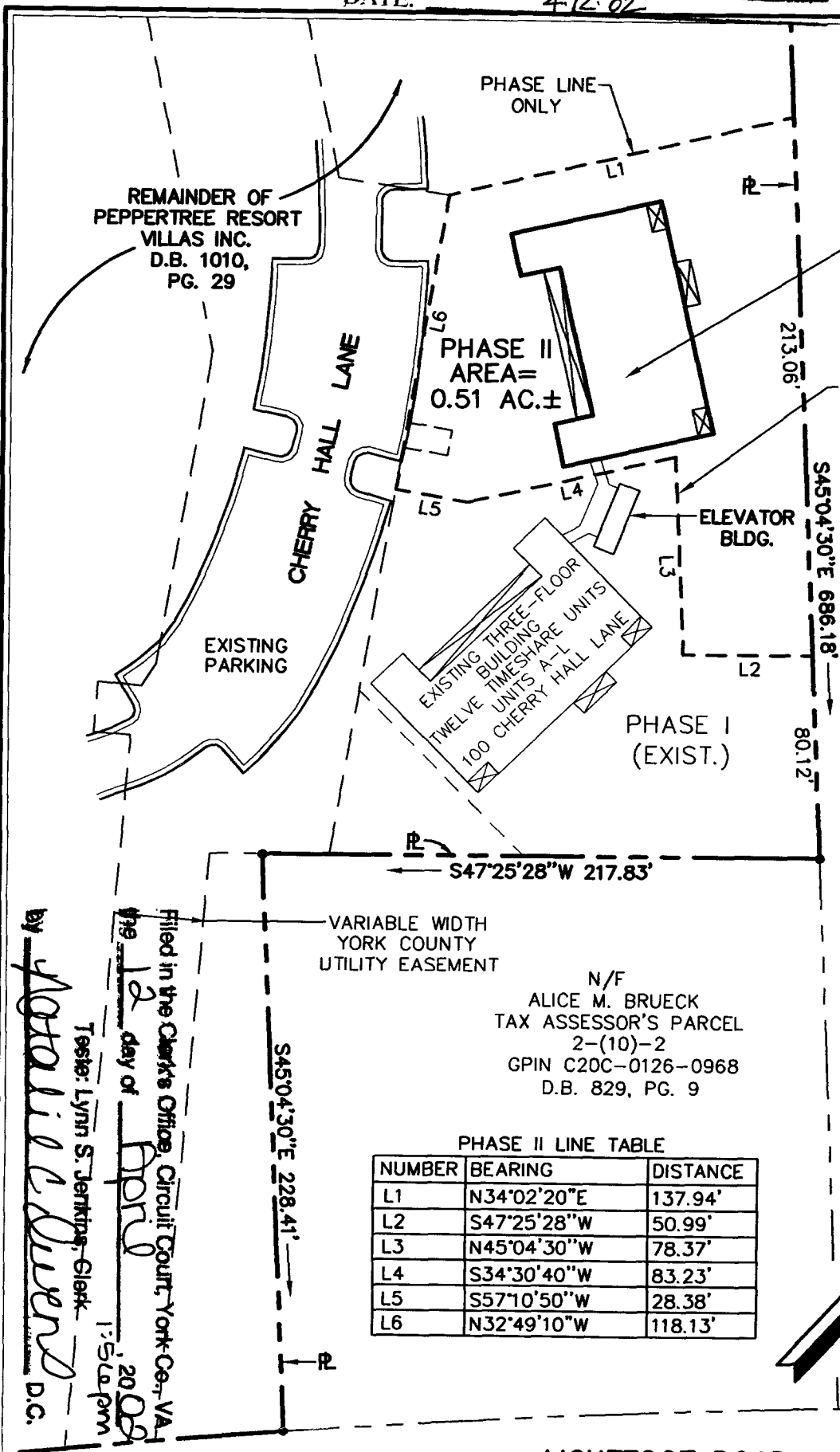
YORK COUNTY
APPROVED FOR RECORDATION

PG0341 APR 12 02

BY: Carl A. Bryant CAB
TITLE: Computer Mapping & GIS Technician
DATE: 4-12-02



NOTE:
UNLESS OTHERWISE NOTED ALL
LINES SHOWN ARE PHASE LINES
AND ARE NOT PROPERTY LINES.



EXISTING THREE-FLOOR
BUILDING
TWELVE TIMESHARE UNITS
UNITS A-L
102 CHERRY HALL LANE

PHASE LINE
ONLY
(TYPICAL)

N/F
NSD, L.L.C.
TAX ASSESSOR'S PARCEL
2-14B
GPIN B20D-4999-1346
D.B. 1039, PG. 660

PHASE I
(EXIST.)

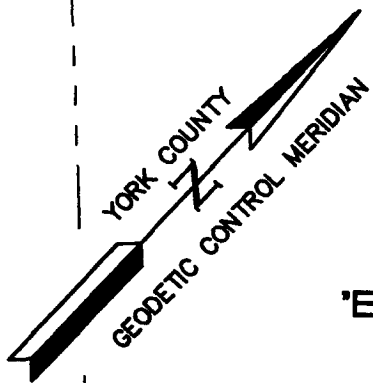
FINISHED FLOORS

FIRST FLOOR= 128.8'±
SECOND FLOOR= 138.2'±
THIRD FLOOR= 147.6'±

N/F
ALICE M. BRUECK
TAX ASSESSOR'S PARCEL
2-(10)-2
GPIN C20C-0126-0968
D.B. 829, PG. 9

PHASE II LINE TABLE

NUMBER	BEARING	DISTANCE
L1	N34°02'20"E	137.94'
L2	S47°25'28"W	50.99'
L3	N45°04'30"W	78.37'
L4	S34°30'40"W	83.23'
L5	S57°10'50"W	28.38'
L6	N32°49'10"W	118.13'



'EXHIBIT 1'

LIGHTFOOT ROAD
STATE ROUTE 646
VARIABLE WIDTH R/W

A PORTION OF
TAX ASSESSOR'S PARCEL
2-(10)-1
GPIN B20D-4226-1602
200 ENGLISH GARDEN WAY

NOTE:
THIS PROPERTY LIES IN FLOOD ZONE "X", (AREAS
DETERMINED TO BE OUTSIDE THE 500 YEAR FLOODPLAIN)
PER F.I.R.M. 510182-0025B DATED 12/16/88.

Filed in the Clerk's Office Circuit Court, York Co., VA
the 12 day of April 2002
by *Yvonne S. Jenkins, Clerk*
Tester: Lynn S. Jenkins, Clerk
1:54pm



References:
D.B. 1010
PG. 29

Notes:

PLAT SHOWING PHASE II
"LIGHTFOOT PLANTATION, A TIME-SHARE"
PEPPERTREE RESORT
VILLAS, INC.

BRUTON DISTRICT YORK COUNTY VIRGINIA

Date: 3/29/02 Scale: 1"=60' Job No.: 8941-4C

ES Consulting Engineers
Engineers, Surveyors, Planners

5248 OLDE TOWNE ROAD, SUITE 1
Williamsburg, Virginia 23188
(757) 253-0040
FAX (757) 220-8994

03:29:02-08:32 lfplamp2