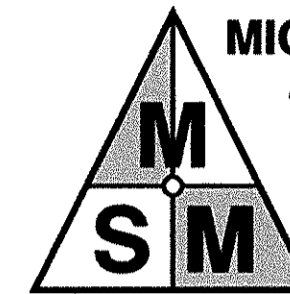


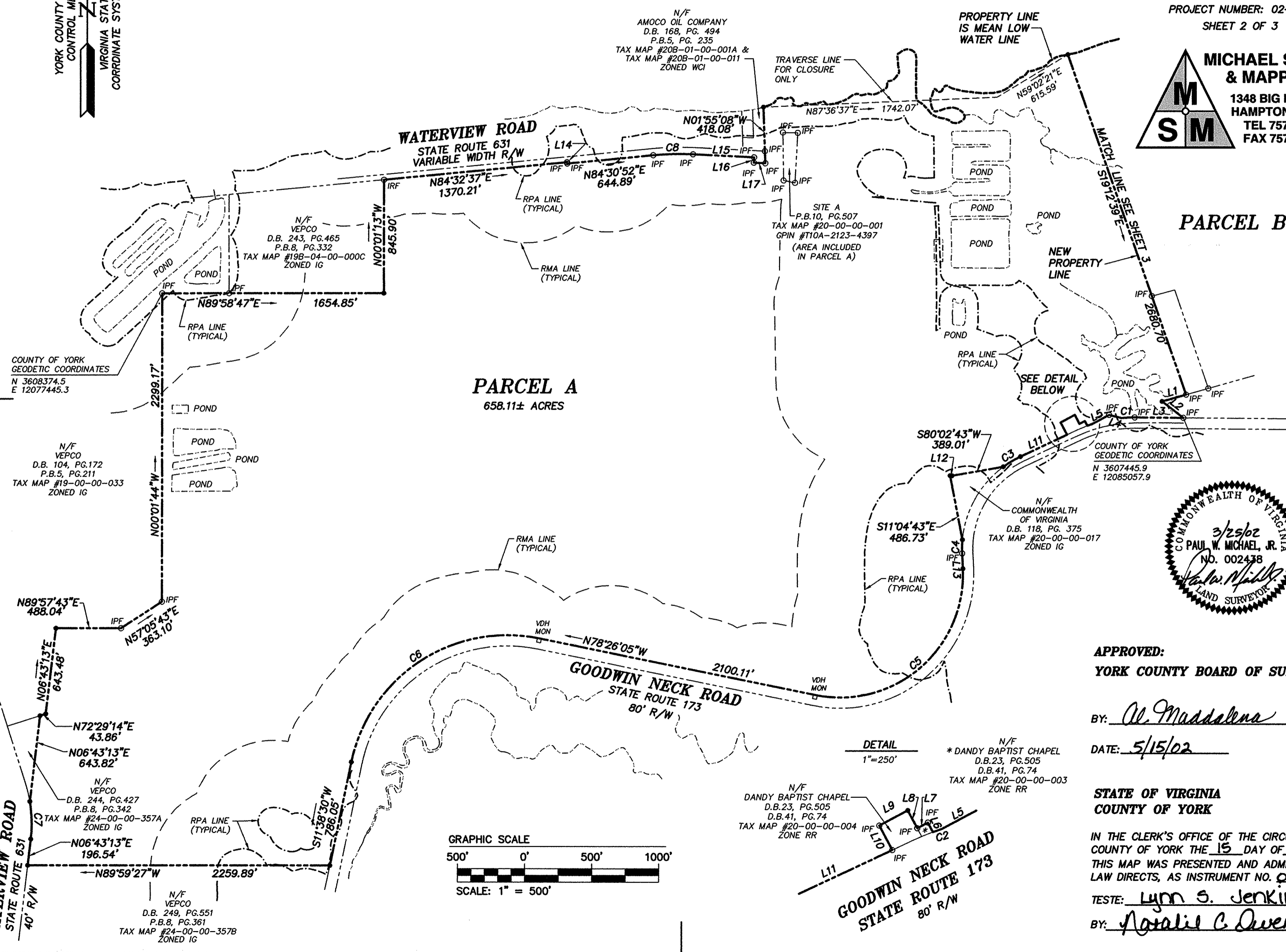
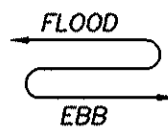
**SUBDIVISION  
OF THE PROPERTY OF  
BP-AMOCO CORPORATION  
CONTAINING 736.57± ARCRES**

GRAFTON DISTRICT COUNTY OF YORK, VIRGINIA  
DATE: MARCH 25, 2002 SCALE: 1"=500'  
PROJECT NUMBER: 02-006  
SHEET 2 OF 3



**MICHAEL SURVEYING  
& MAPPING, P.C.**  
1348 BIG BETHEL RD  
HAMPTON, VA. 23666  
TEL 757.766.3232  
FAX 757.766.3302

**YORK RIVER**



COUNTY OF YORK  
GEODETIC COORDINATES  
N 3608374.5  
E 12077445.3

N/F  
VEPCO  
D.B. 104, PG.172  
P.B.5, PG.211  
TAX MAP #19-00-00-033  
ZONED IG

N89°57'43"E  
488.04'  
N57°05'43"E  
363.10'

N72°29'14"E  
43.86'  
N06°43'13"E  
643.82'

N/F  
VEPCO  
D.B. 244, PG.427  
P.B.8, PG.342  
TAX MAP #24-00-00-357A  
ZONED IG

N06°43'13"E  
196.54'  
N89°59'27"W  
2259.89'

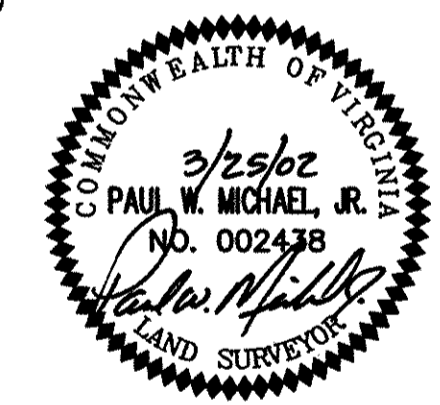
N/F  
VEPCO  
D.B. 249, PG.551  
P.B.8, PG.361  
TAX MAP #24-00-00-357B  
ZONED IG

N/F  
AMOCO OIL COMPANY  
D.B. 168, PG. 494  
P.B.5, PG. 235  
TAX MAP #20B-01-00-001A &  
TAX MAP #20B-01-00-011  
ZONED WCI

TRaverse LINE  
FOR CLOSURE  
ONLY

SITE A  
P.B.10, PG.507  
TAX MAP #20-00-00-001  
GPIN #T10A-2123-4397  
(AREA INCLUDED  
IN PARCEL A)

N/F  
COMMONWEALTH  
OF VIRGINIA  
D.B. 118, PG. 375  
TAX MAP #20-00-00-017  
ZONED IG



**APPROVED:**  
**YORK COUNTY BOARD OF SUPERVISORS**

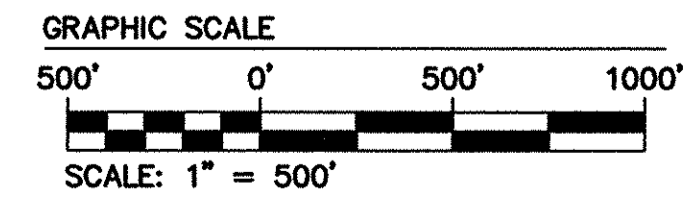
BY: Al. Maddalena, PLAT APPROVING AGENT

DATE: 5/15/02

**STATE OF VIRGINIA  
COUNTY OF YORK**

IN THE CLERK'S OFFICE OF THE CIRCUIT COURT FOR THE  
COUNTY OF YORK THE 15 DAY OF May, 2002.  
THIS MAP WAS PRESENTED AND ADMITTED TO RECORD AS THE  
LAW DIRECTS, AS INSTRUMENT NO. 020008045

TESTE: Lynn S. Jenkins, CLERK 4:05pm  
BY: Natalie C. Owens, P.C.



DETAIL  
1"=250'  
N/F  
DANDY BAPTIST CHAPEL  
D.B.23, PG.505  
D.B.41, PG.74  
TAX MAP #20-00-00-003  
ZONE RR

N/F  
DANDY BAPTIST CHAPEL  
D.B.23, PG.505  
D.B.41, PG.74  
TAX MAP #20-00-00-004  
ZONE RR

