

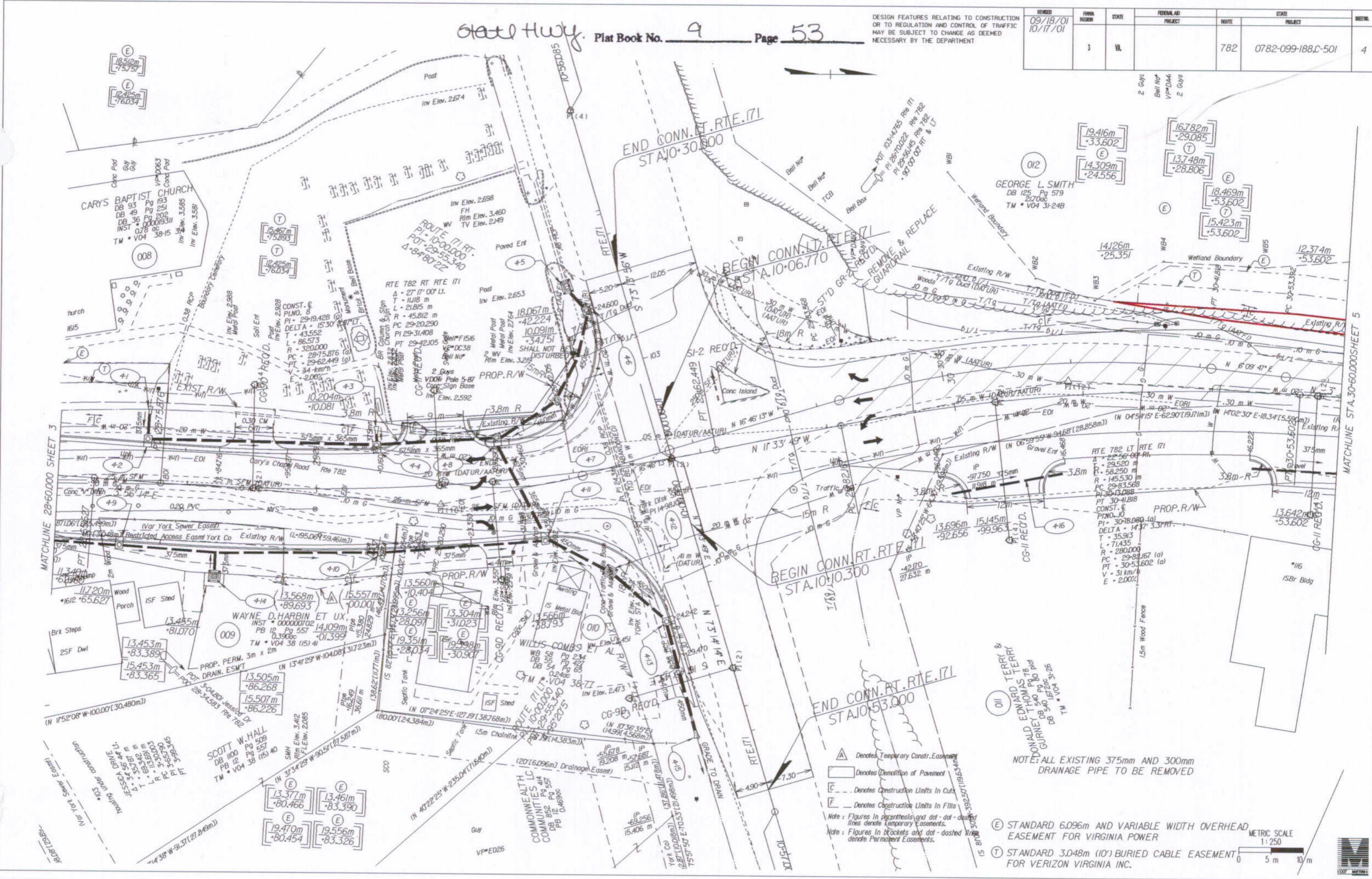
Design File - c:\documents and settings\... Ref. File - c:\documents and settings\... Levels On - 17943

HAMPTON ROADS DISTRICT DESIGN UNIT

State Hwy. Plat Book No. 9 Page 53

DESIGN FEATURES RELATING TO CONSTRUCTION OR TO REGULATION AND CONTROL OF TRAFFIC MAY BE SUBJECT TO CHANGE AS DEEMED NECESSARY BY THE DEPARTMENT

REVISION	DATE	BY	STATE	FEDERAL AID	ROUTE	PROJECT	SHEET
09/18/01	10/17/01		VA		782	0782-099-188C-501	4



- △ Denotes Temporary Constr. Easement
 - Denotes Demolition of Pavement
 - Denotes Construction Limits in Cuts
 - Denotes Construction Limits in Fills
- Note: Figures in parentheses and dot-dot-dashed lines denote Temporary Easements.
 Note: Figures in brackets and dot-dashed lines denote Permanent Easements.

NOTE: ALL EXISTING 375mm AND 300mm DRAINAGE PIPE TO BE REMOVED

(E) STANDARD 6.096m AND VARIABLE WIDTH OVERHEAD EASEMENT FOR VIRGINIA POWER
 (T) STANDARD 3.048m (10') BURIED CABLE EASEMENT FOR VERIZON VIRGINIA INC.

METRIC SCALE
 1:250
 0 5m 10m

SURVEYED BY... DESIGNED BY... CADD OPERATOR... REVISED BY...

4/8/02 MFC

