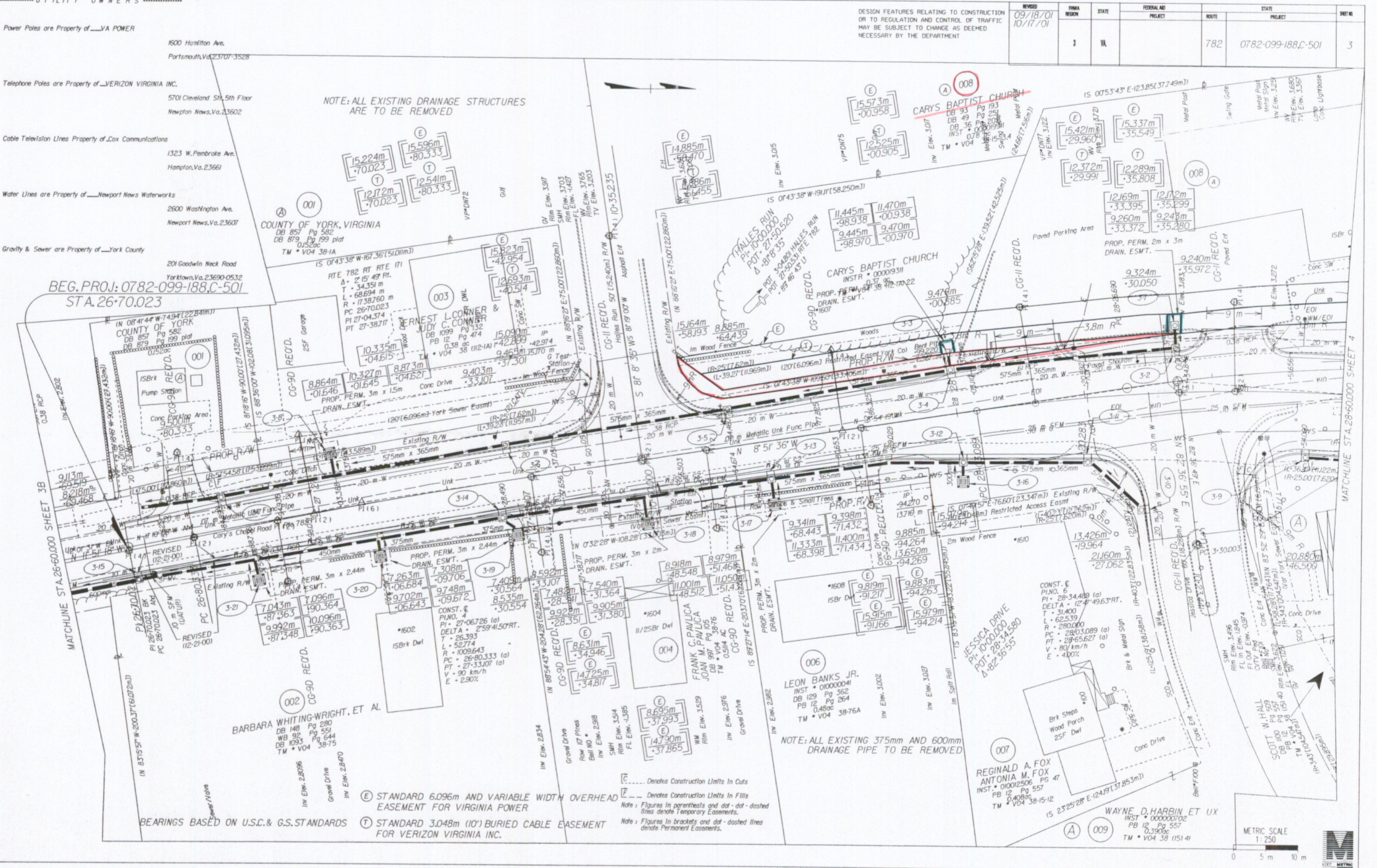


Design Files - c:\documents of me... Ref. File - a793500.dgn Levels On - 163 27 Ref. File - a793500.dgn Levels On - 163 Ref. File - a793500.dgn Levels On - 163 Ref. File - a793500.dgn Levels On - 163 Ref. File - a793500.dgn Levels On - 163 Ref. File - a793500.dgn Levels On - 163 Ref. File - a793500.dgn Levels On - 163 Ref. File - a793500.dgn Levels On - 163 Ref. File - a793500.dgn Levels On - 163

HAMPTON ROADS DISTRICT DEPARTMENT

SURVEYED BY: R.C. HARRIS, 12/25/93
DESIGNED BY: J.F. BARTEN, 12/25/93
CAD OPERATOR: J.F. BARTEN, 12/25/93
REVISED BY: J.F. BARTEN, 12/25/93

4/10/02 08:56



REVISION	DATE	DESCRIPTION
09/18/01	10/17/01	DESIGN FEATURES RELATING TO CONSTRUCTION OR TO REGULATION AND CONTROL OF TRAFFIC MAY BE SUBJECT TO CHANGE AS DEEMED NECESSARY BY THE DEPARTMENT

NOTE: ALL EXISTING DRAINAGE STRUCTURES ARE TO BE REMOVED

NOTE: ALL EXISTING 375mm AND 600mm DRAINAGE PIPE TO BE REMOVED

(E) STANDARD 6.096m AND VARIABLE WIDTH OVERHEAD EASEMENT FOR VIRGINIA POWER
 (T) STANDARD 3.048m (10') BURIED CABLE EASEMENT FOR VERIZON VIRGINIA INC.

--- Denotes Construction Limits In Cuts
 --- Denotes Construction Limits In Fills
 Note: Figures in parentheses and dot-dot-dashed lines denote Temporary Easements.
 Note: Figures in brackets and dot-dashed lines denote Permanent Easements.

BEARINGS BASED ON U.S.C. & G.S. STANDARDS

