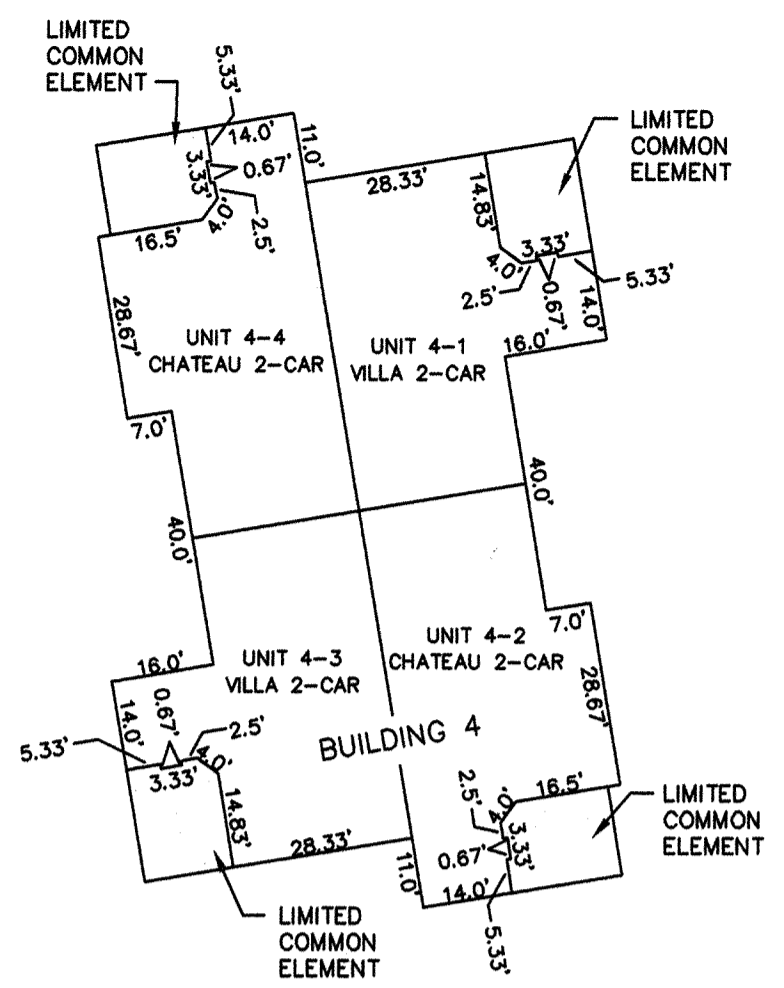


VICINITY MAP SCALE: 1" = 2000'

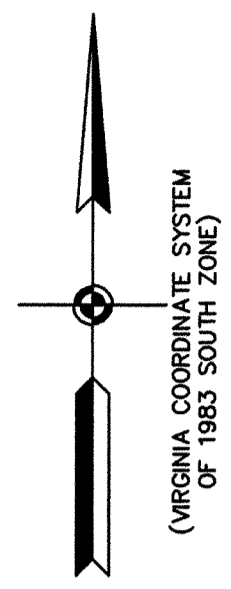
NOTE: ALL BUILDING DIMENSIONS SHOWN HEREON ARE EXTERIOR FRAMING DIMENSIONS AND ARE IN FEET.



BUILDING 4

NO.	RADIUS	DELTA	ARC	TANGENT	CHORD	CHORD BRG.
1	950.00'	15°24'33"	255.49'	128.52'	254.72'	S04°35'23"E
2	1006.00'	11°02'41"	193.92'	97.26'	193.62'	N06°46'19"W
3	50.00'	50°45'18"	44.29'	23.72'	42.86'	N55°12'18"E
4	150.00'	38°43'45"	101.39'	52.72'	99.47'	N61°13'04"E
5	60.00'	102°32'30"	107.38'	74.81'	93.61'	N09°25'03"W
6	150.00'	38°43'45"	101.39'	52.72'	99.47'	N80°03'10"W
7	176.00'	12°28'12"	38.31'	19.23'	38.23'	N74°20'51"E
8	224.00'	01°45'06"	6.85'	3.42'	6.85'	N68°59'18"E
9	54.00'	90°00'00"	84.82'	54.00'	76.37'	N54°25'03"W
10	20.00'	81°37'46"	28.49'	17.27'	26.14'	N50°13'56"W
11	224.00'	07°22'12"	28.81'	14.43'	28.79'	N87°21'43"W
12	300.00'	15°23'32"	80.59'	40.54'	80.35'	S88°37'37"W
13	20.00'	90°00'00"	31.42'	20.00'	28.28'	S35°55'51"W
14	15.00'	90°00'00"	23.56'	15.00'	21.21'	S54°04'09"E

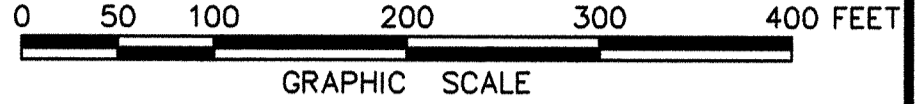
NOTE: PROPERTY LIES IN ZONE X, WHITE, (AREAS DETERMINED TO BE OUTSIDE 500-YEAR FLOOD PLAIN), AS SHOWN ON FLOOD INSURANCE RATE MAP FOR YORK COUNTY, VIRGINIA, COMM. NO. 510182 0036B, 12/16/88 AND COMM. NO. 510182 0037B, 12/16/88.



(VIRGINIA COORDINATE SYSTEM OF 1983 SOUTH ZONE)

**EXHIBIT "C"**  
**PLAT OF**  
**RAINBROOK VILLAS**  
**A CONDOMINIUM**  
**PHASE XVI (INSTR.#020005988)**

SHEET 1 OF 3  
 GRAFTON DISTRICT - COUNTY OF YORK, VIRGINIA  
 SCALE: 1" = 100' MAY 14, 2002

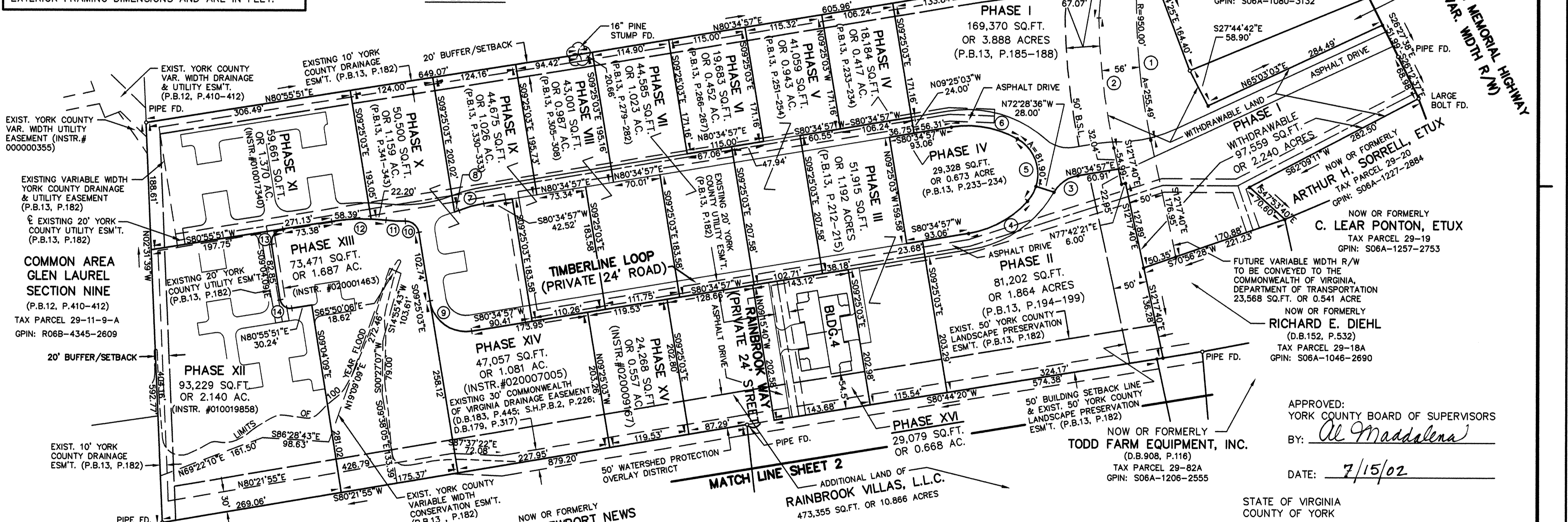


**THE SIRINE GROUP, LTD.**  
 SURVEYORS • ENGINEERS • PLANNERS  
 4794 GEORGE WASHINGTON MEMORIAL HIGHWAY  
 U.S. ROUTE 17  
 P.O. BOX 450  
 WHITE MARSH, VIRGINIA 23183

NOW OR FORMERLY  
**JOHN GOODE MARTIN, JR.**  
**& BETTY L. MARTIN**  
 (D.B.460, P.115; W.B.25, P.237; D.B.207, P.47)  
 TAX PARCEL 29-17  
 GPIN: S06A-0403-3262

NOW OR FORMERLY  
**R.T. ORKIE, EST.**  
 (D.B.83, P.61)  
 TAX PARCEL 29-23  
 GPIN: S06A-1080-3132

NOW OR FORMERLY  
**R.T. ORKIE, EST.**  
 (D.B.83, P.61)  
 TAX PARCEL 29-22  
 GPIN: S06A-125-3051

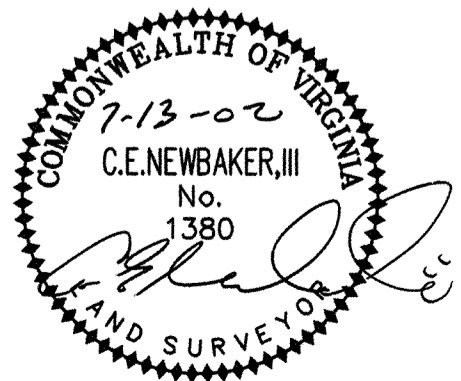


MATCH LINE SHEET 2

**UTILITY NOTES:**  
 WATER: EACH UNIT WITHIN THIS CONDOMINIUM IS SERVED BY PUBLIC WATER PROVIDED BY THE CITY OF NEWPORT NEWS.  
 SEWER: EACH UNIT WITHIN THIS CONDOMINIUM IS SERVED BY PUBLIC SEWER PROVIDED BY THE COUNTY OF YORK AND H.R.S.D.

PHASE XVI AREA = 29,079 SQ.FT. OR 0.668 ACRES  
 ADDITIONAL AREA = 473,355 SQ.FT. OR 10.866 ACRES  
 TOTAL AREA = 1,393,622 SQ.FT. OR 31.993 ACRES

THIS PROPERTY IS SUBJECT TO COVENANTS, CONDITIONS, RESTRICTIONS, EASEMENTS, LIENS FOR ASSESSMENTS, OPTIONS, POWER OF ATTORNEYS, AND LIMITATIONS ON TITLE, CREATED BY THE VIRGINIA CONDOMINIUM STATUTE.



NOW OR FORMERLY  
**CITY OF NEWPORT NEWS**  
 (D.B.591, P.385)  
 TAX PARCEL 23-00-00-014  
 GPIN: R06C-1589-2324

ADDITIONAL LAND OF  
**RAINBROOK VILLAS, L.L.C.**  
 473,355 SQ.FT. OR 10.866 ACRES



NOW OR FORMERLY  
**TODD FARM EQUIPMENT, INC.**  
 (D.B.908, P.116)  
 TAX PARCEL 29-82A  
 GPIN: S06A-1206-2555

APPROVED:  
 YORK COUNTY BOARD OF SUPERVISORS  
 BY: Al Maddalena  
 DATE: 7/15/02

STATE OF VIRGINIA  
 COUNTY OF YORK

IN THE CLERK'S OFFICE OF THE CIRCUIT COURT FOR THE COUNTY OF YORK, VIRGINIA, THE 17<sup>th</sup> DAY OF July, 2002, THIS PLAT WAS PRESENTED AND ADMITTED TO RECORD AS THE LAW DIRECTS AS INSTRUMENT NUMBER:

020014190  
 TESTE: Lynn S. Jenkins  
 CLERK  
 BY: Lusia Brogden  
 DEPUTY CLERK

PROPERTY IS ASSESSOR'S PARCEL 29-00-00-018  
 GPIN: S06C-0684-2246