

VIRGINIA STATE GRID NORTH - SOUTH ZONE 1983

PLAT OF SUBDIVISION  
AND DEDICATION OF EASEMENTS  
PHASE 1A  
FAIRFIELD WILLIAMSBURG @  
GOVERNOR'S GREEN

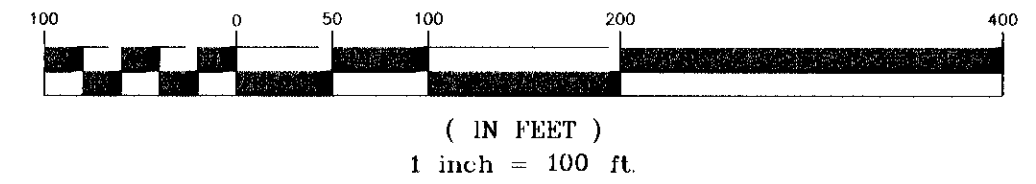
BRUTON DISTRICT YORK COUNTY, VIRGINIA  
SCALE 1"=100'

DATE: JULY 18, 2001 LAST REVISED MAY 22, 2002

**Dewberry & Davis, Inc.**  
A Dewberry Company

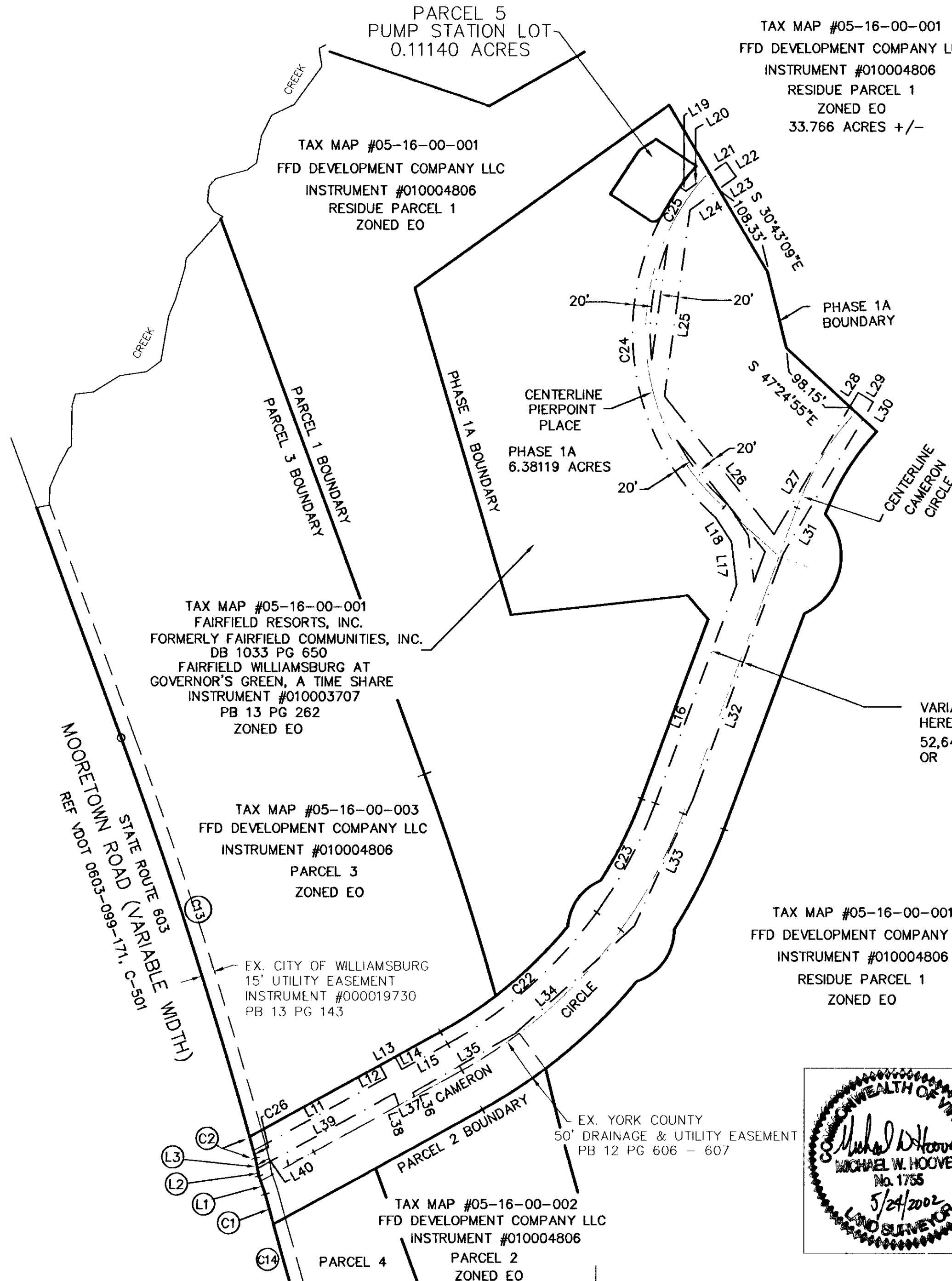
Architects Engineers Planners Surveyors  
9881 MAYLAND DRIVE, SUITE 201  
RICHMOND, VA 23233 PHONE 804 290-7957, FAX 804 290-7928

GRAPHIC SCALE



UTILITY EASEMENT

COURSE	BEARING	DISTANCE
L11	N61°15'48"E	171.68'
L12	N28°44'12"W	16.00'
L13	N61°15'48"E	20.00'
L14	S28°44'12"E	16.00'
L15	N61°15'48"E	59.50'
C22	Rad: 516.00' Arc: 227.55' Tan: 115.66' CA: 25°16'01" Chd: N48°37'48"E 225.71'	
C23	Rad: 516.00' Arc: 140.58' Tan: 70.73' CA: 15°36'35" Chd: N28°11'30"E 140.14'	
L16	N20°23'12"E	264.24'
L17	N07°08'41"W	48.55'
L18	N33°19'42"W	33.33'
C24	Rad: 279.41' Arc: 372.69' Tan: 219.97' CA: 76°25'27" Chd: N10°19'05"W 345.67'	
C25	Rad: 279.41' Arc: 39.49' Tan: 19.78' CA: 8°05'53" Chd: N31°56'35"E 39.46'	
L19	S56°03'32"E	8.70'
L20	N54°22'10"E	33.21'
L21	N54°22'10"E	22.48'
L22	S35°37'50"E	20.00'
L23	S54°22'10"W	24.20'
L24	S54°22'10"W	40.26'
L25	S07°44'50"W	212.25'
L26	S38°31'44"E	199.95'
L27	N30°42'24"E	168.14'
L28	N30°42'24"E	18.67'
L29	S59°17'36"E	20.00'
L30	S30°42'24"W	22.88'
L31	S30°42'24"W	177.49'
L32	S20°06'18"W	297.10'
L33	S24°51'57"W	157.11'
L34	S47°55'49"W	180.83'
L35	S60°01'55"W	135.26'
L36	S18°58'06"E	4.67'
L37	S61°15'44"W	20.29'
L38	N18°58'06"W	14.21'
L39	S61°15'48"W	177.21'
L40	N10°36'10"W	11.81'
C26	Rad: 5854.65' Arc: 9.02' Tan: 4.51' CA: 0°05'18" Chd: N15°26'33"W 9.02'	



VARIABLE WIDTH UTILITY EASEMENT  
HEREBY CONVEYED TO YORK COUNTY  
52,645 SQ FT  
OR 1.208 ACRES

APPROVED:

YORK COUNTY BOARD OF SUPERVISORS

BY: *Al Maddalena* PLAT APPROVING AGENT.

DATE: *10/28/2002*

COMMONWEALTH OF VIRGINIA  
COUNTY OF YORK

IN THE CLERK'S OFFICE OF THE CIRCUIT COURT FOR THE COUNTY OF  
YORK THE *29<sup>th</sup>* DAY OF *October*, 2002.

THIS MAP WAS PRESENTED AND ADMITTED TO RECORD AS THE LAW  
DIRECTS.

INSTRUMENT NO. *020021288*

TESTE: *Lynn S. Jenkins* CLERK

BY: *White, D.C.*

