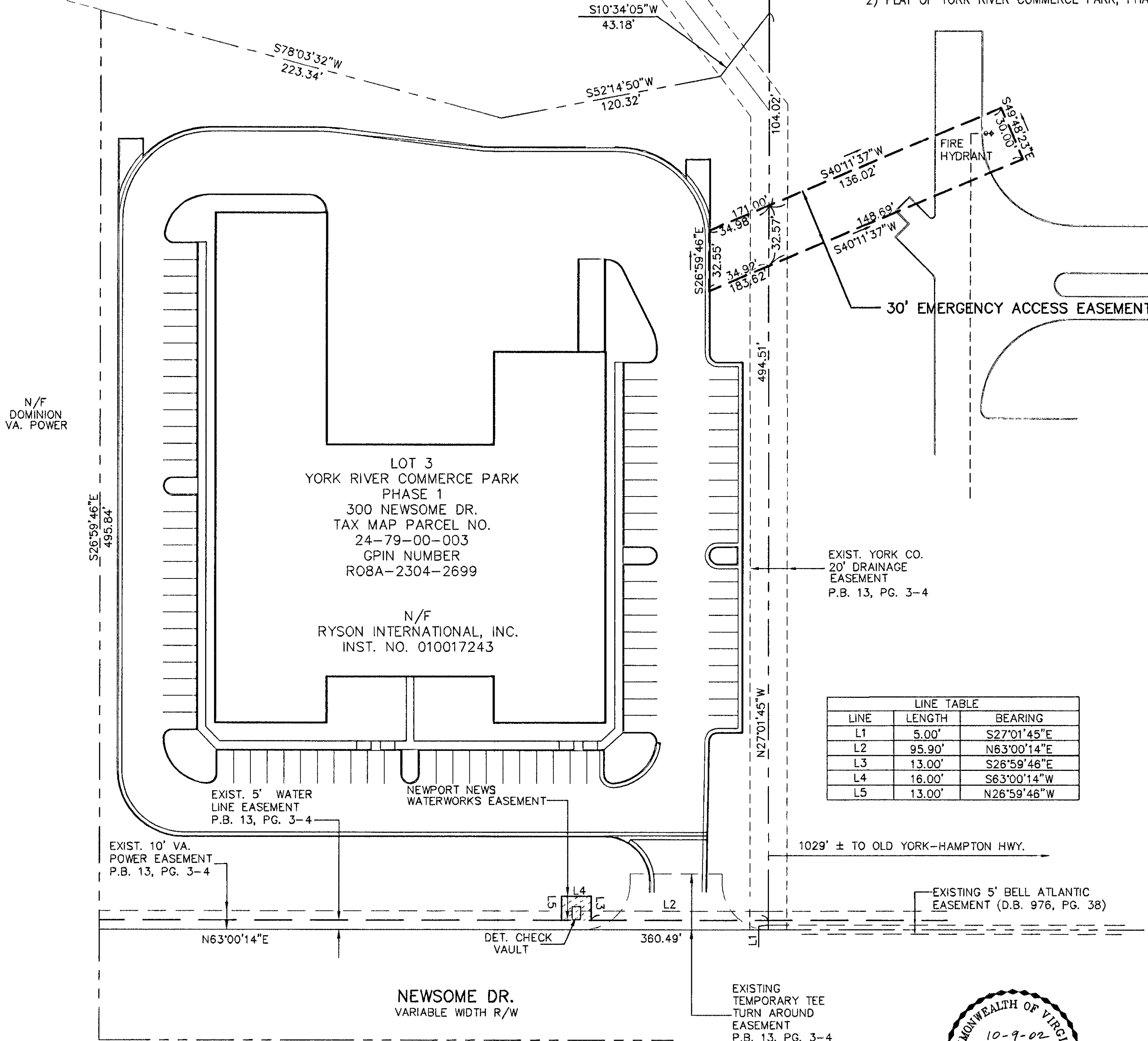


EXIST. PRIVATE
VARIABLE WIDTH
DRAINAGE EASEMENT

NOTES:

- 1) THIS PLAT WAS PREPARED WITHOUT THE BENEFIT OF A CURRENT TITLE REPORT AND THEREFORE MAY NOT DEPICT ALL TITLE MATTERS AFFECTING THE PROPERTY SHOWN HEREON.
- 2) PLAT OF YORK RIVER COMMERCE PARK, PHASE 1 RECORDED IN P.B. 13, PG. 3-4.



LOT 3
YORK RIVER COMMERCE PARK
PHASE 1
300 NEWSOME DR.
TAX MAP PARCEL NO.
24-79-00-003
GPIN NUMBER
RO8A-2304-2699

N/F
RYSON INTERNATIONAL, INC.
INST. NO. 010017243

LOT 2
N/F
INDUSTRIAL DEVELOPMENT AUTHORITY
OF THE COUNTY OF YORK
GPIN R08C-1984-2350
TAX MAP AND PARCEL: 24-79-00-002
ZONING: IG

PLAT SHOWING
EMERGENCY ACCESS EASEMENT
TO BE CONVEYED TO
RYSON INTERNATIONAL, INC.

FROM
INDUSTRIAL DEVELOPMENT AUTHORITY
OF THE COUNTY OF YORK

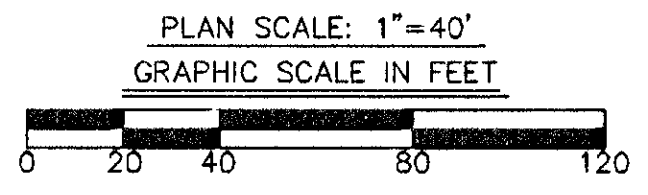
NELSON DISTRICT, YORK COUNTY, VIRGINIA
SCALE: 1" = 40' DATE: 10-09-02

SHEET 1 OF 1

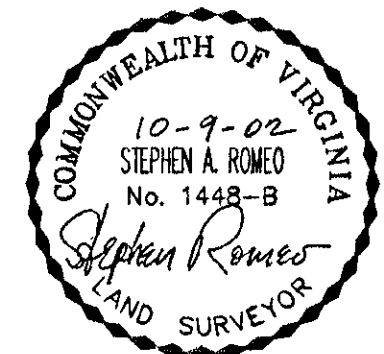
LINE	LENGTH	BEARING
L1	5.00'	S27°01'45"E
L2	95.90'	N63°00'14"E
L3	13.00'	S26°59'46"E
L4	16.00'	S63°00'14"W
L5	13.00'	N26°59'46"W

**LANDMARK
DESIGN GROUP**
Engineers • Planners • Surveyors
Landscape Architects • Environmental Consultants

4029 Ironbound Road
Suite 100
Williamsburg, VA 23188
Tel. (757) 253-2975
Fax (757) 229-0049
Email: lmdg@landmarkdgb.com



Filed in the Clerk's Office, Circuit Court, York Co., VA
the 19th day of November, 2002
Attest: Lynn S. Jenkins, Clerk 11:40am
by Lisa Bugden D.C.



PLAT APPROVED FOR RECORDATION
BY: *Al Maddalena* 11/18/02
PLAT APPROVING AGENT