

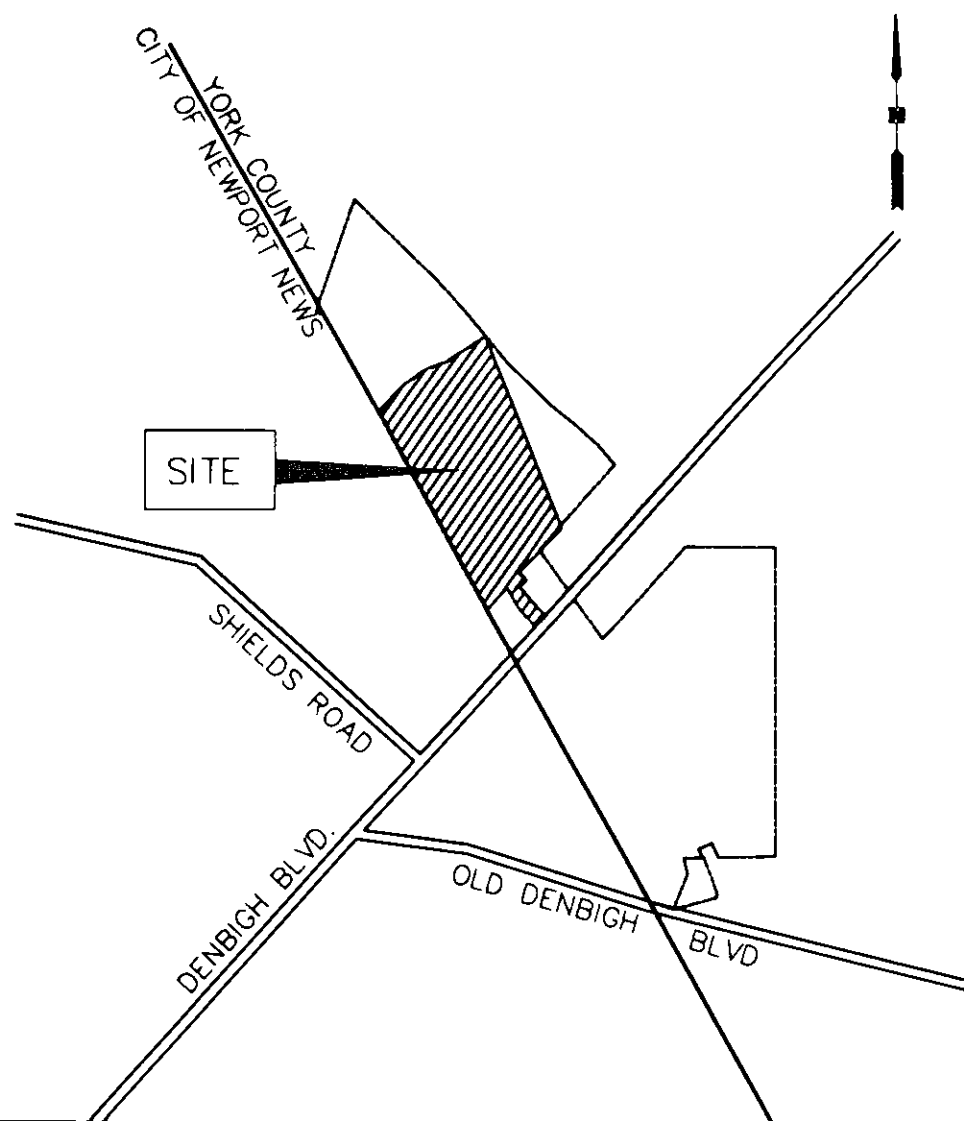
GPIN PAGE-3067-2294  
GPIN PAGE-3049-3395

PLAT SHOWING  
CONSERVATION EASEMENTS  
LOCATED WITHIN  
**COLONY PINES OF YORK  
SUBDIVISION, SECTION ONE**  
NELSON MAGISTERIAL DISTRICT  
COUNTY OF YORK, VIRGINIA

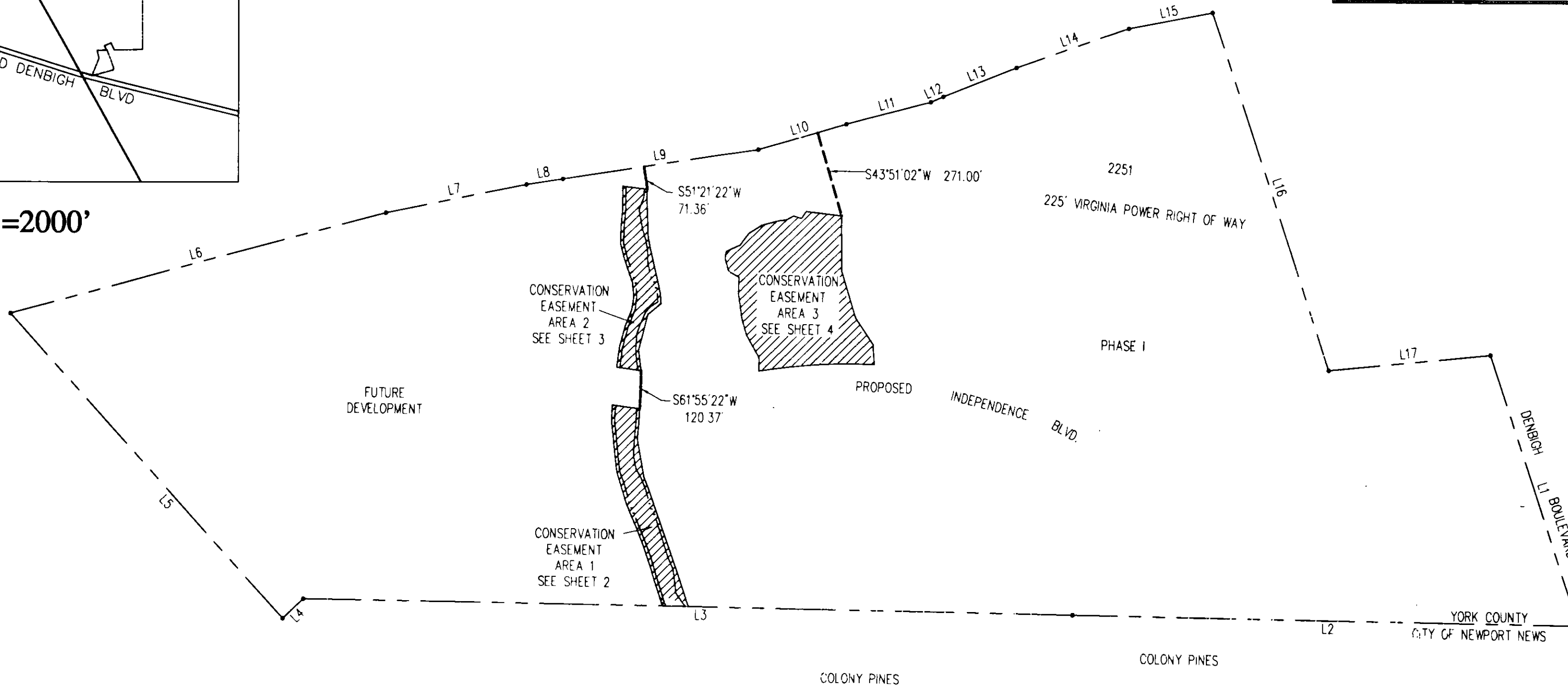
DATE: 09/09/02 SHEET 1 OF 4 SCALE: 1" = 300'

PROJECT NO: 30801.00 DRAWN BY: MDC

**VHB** Vanasse Hangen Brustlin, Inc.  
Transportation Land Development Environmental Services  
11832 Rock Landing Drive, Suite 203  
Newport News, Virginia 23606-4231  
(757) 873-3386 • FAX (757) 873-0757



Location Map: 1"=2000'

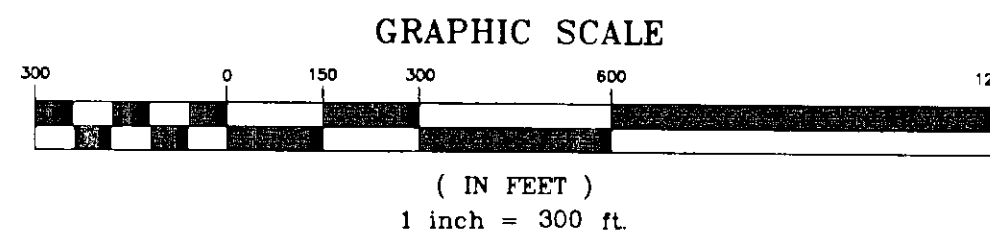


LINE TABLE		
LINE	LENGTH	BEARING
L1	894.16	S41°54'15"W
L2	1596.44	N28°59'53"W
L3	2428.93	N28°57'33"W
L4	89.56	N73°44'33"W
L5	1285.61	N18°11'33"E
L6	1222.33	S44°44'16"E
L7	452.52	S41°18'20"E
L8	116.66	S38°38'38"E
L9	627.13	S38°38'38"E
L10	289.38	S46°08'58"E
L11	275.38	S44°42'19"E
L12	42.56	S53°34'38"E
L13	247.74	S51°35'30"E
L14	376.20	S49°29'43"E
L15	270.00	S41°11'35"E
L16	1173.69	S41°53'43"W
L17	511.96	S35°30'19"E

**LEGEND**

- DENOTES CONSERVATION EASEMENT
- A-17 DENOTES WETLAND FLAG DESIGNATIONS
- DENOTES LIMITS OF WETLANDS
- DENOTES LIMITS OF CONSERVATION EASEMENT

CONSERVATION EASEMENT  
 AREA 1 = 1.133 ACRES  
 AREA 2 = 1.004 ACRES  
 AREA 3 = 3.658 ACRES  
 TOTAL AREA = 5.795 ACRES



PLAT # 020025737

APPROVED:  
YORK COUNTY BOARD OF SUPERVISORS

BY: *Al Maddalena*  
PLAT APPROVING AGENT

DATE: 12/16/02

STATE OF VIRGINIA  
COUNTY OF YORK

IN THE CLERK'S OFFICE OF THE CIRCUIT COURT FOR THE COUNTY OF YORK, THE 18<sup>th</sup> DAY OF December, 2002. THIS MAP WAS PRESENTED AND ADMITTED TO RECORD AS THE LAW DIRECTS AS INSTRUMENT # 020025737.

TESTE: Lynn S. Jenkins  
CLERK

BY: *Lisa Brogden*