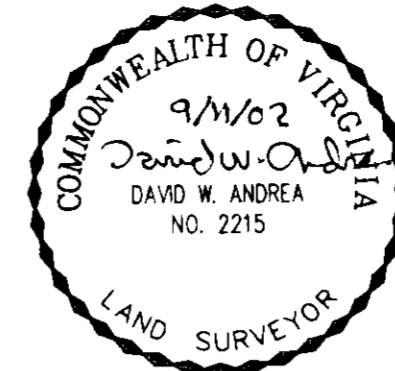


LINE TABLE		
LINE	LENGTH	BEARING
L60	171.82	S59°52'55"W
L61	151.14	S43°02'41"W
L62	98.95	S26°23'41"W
L63	62.36	S56°30'58"W
L64	42.50	N60°18'31"E
L65	80.97	N30°23'52"E
L66	52.00	N43°48'30"E
L67	75.81	N52°10'19"E
L68	52.91	N61°26'54"E
L69	40.35	N01°58'08"W
L70	38.78	N44°16'39"E
L71	22.19	N69°03'38"E
L72	49.95	S53°45'43"E
L73	47.44	S82°52'22"E
L74	47.38	S62°00'01"E
L75	56.27	S44°55'27"E
L76	25.06	S38°08'59"E
L77	24.47	S58°28'06"E
L78	26.65	S15°11'12"E
L79	25.37	S84°44'00"E
L80	112.38	S23°13'42"E

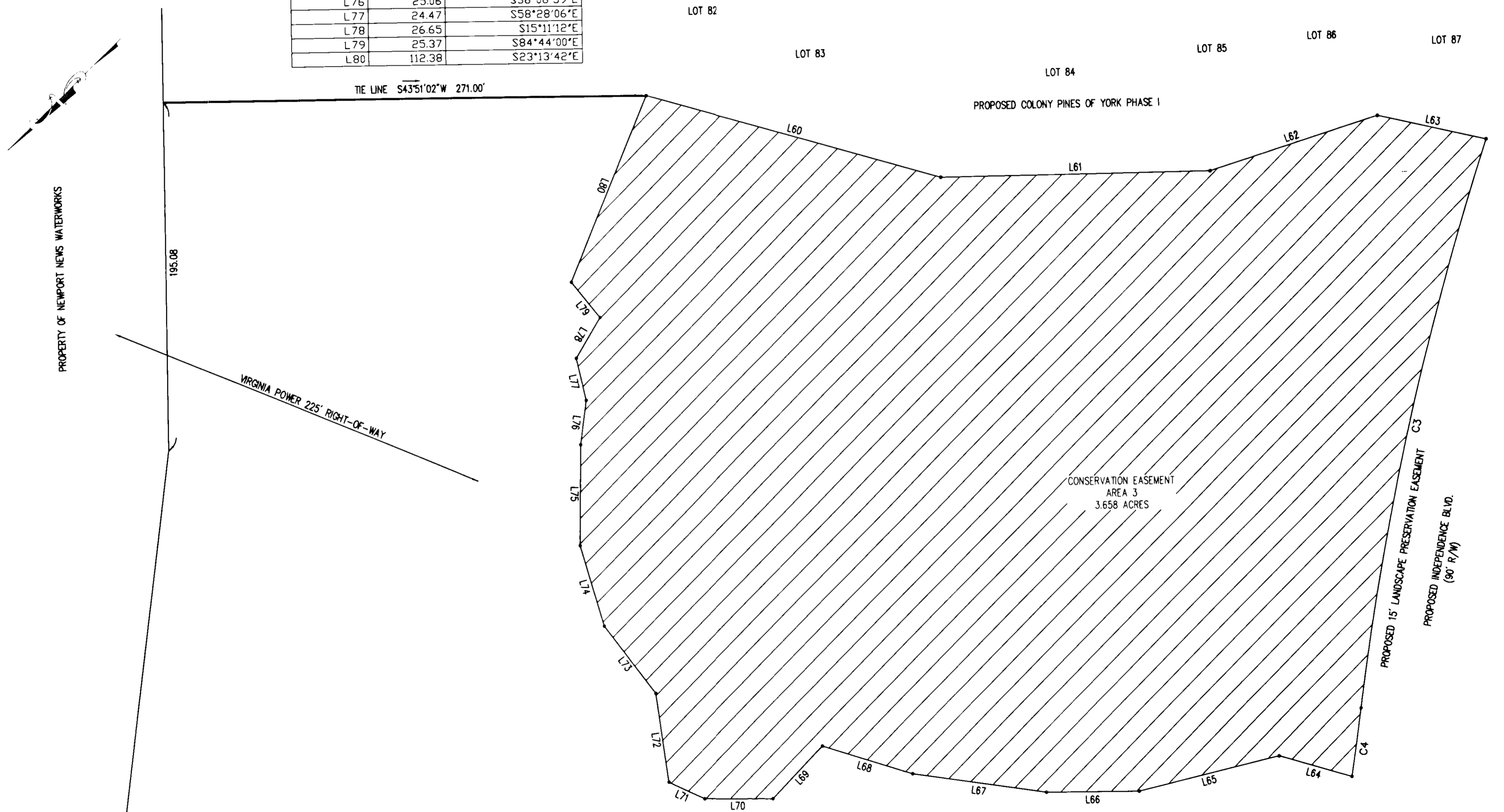


PLAT SHOWING
 CONSERVATION EASEMENTS
 LOCATED WITHIN
**COLONY PINES OF YORK
 SUBDIVISION, SECTION ONE**
 NELSON MAGISTERIAL DISTRICT
 COUNTY OF YORK, VIRGINIA

DATE: 09/09/02 SHEET 4 OF 4 SCALE: 1" = 40'
 PROJECT NO: 30801.00 DRAWN BY: MDC

CURVE TABLE					
CURVE	RADIUS	ARC LENGTH	TANGENT	CHORD	CHORD BEARING
C3	1710.00	327.21	164.11	326.72	N32°51'40"W
C4	1590.00	38.36	19.18	38.36	S37°39'07"E

VHB Vanasse Hangen Brustlin, Inc.
 Transportation Land Development Environmental Services
 11832 Rock Landing Drive, Suite 203
 Newport News, Virginia 23606-4231
 (757) 873-3386 • FAX (757) 873-0757



PLAT REGISTERED WITH # 20025737

18th December 2002
 David W. Andrea
 David W. Andrea

