

VICINITY MAP
1"=2000'

- LEGEND
- CMS CONCRETE MONUMENTS TO BE SET
 - CMF CONCRETE MONUMENTS FOUND
 - IPF IRON PINS FOUND

CURVE TABLE						
CURVE	RADIUS	LENGTH	TANGENT	CHORD	CHORD BEARING	DELTA
C1	1080.92'	69.31'	34.67'	69.30'	N24°01'18"W	3°40'26"

RIGHT-OF-WAY DEDICATION,
BULIFANTS BOULEVARD
PHASE 1
INTERNATIONAL CENTER
WILLIAMSBURG

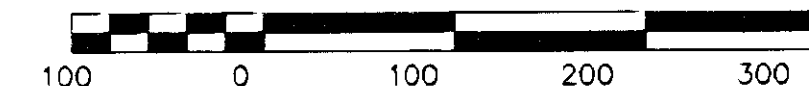
BRUTON DISTRICT YORK COUNTY, VIRGINIA
DATE: 04/30/03 SCALE: 1" = 100'

SHEET 2 OF 2

**LANDMARK
DESIGN GROUP**

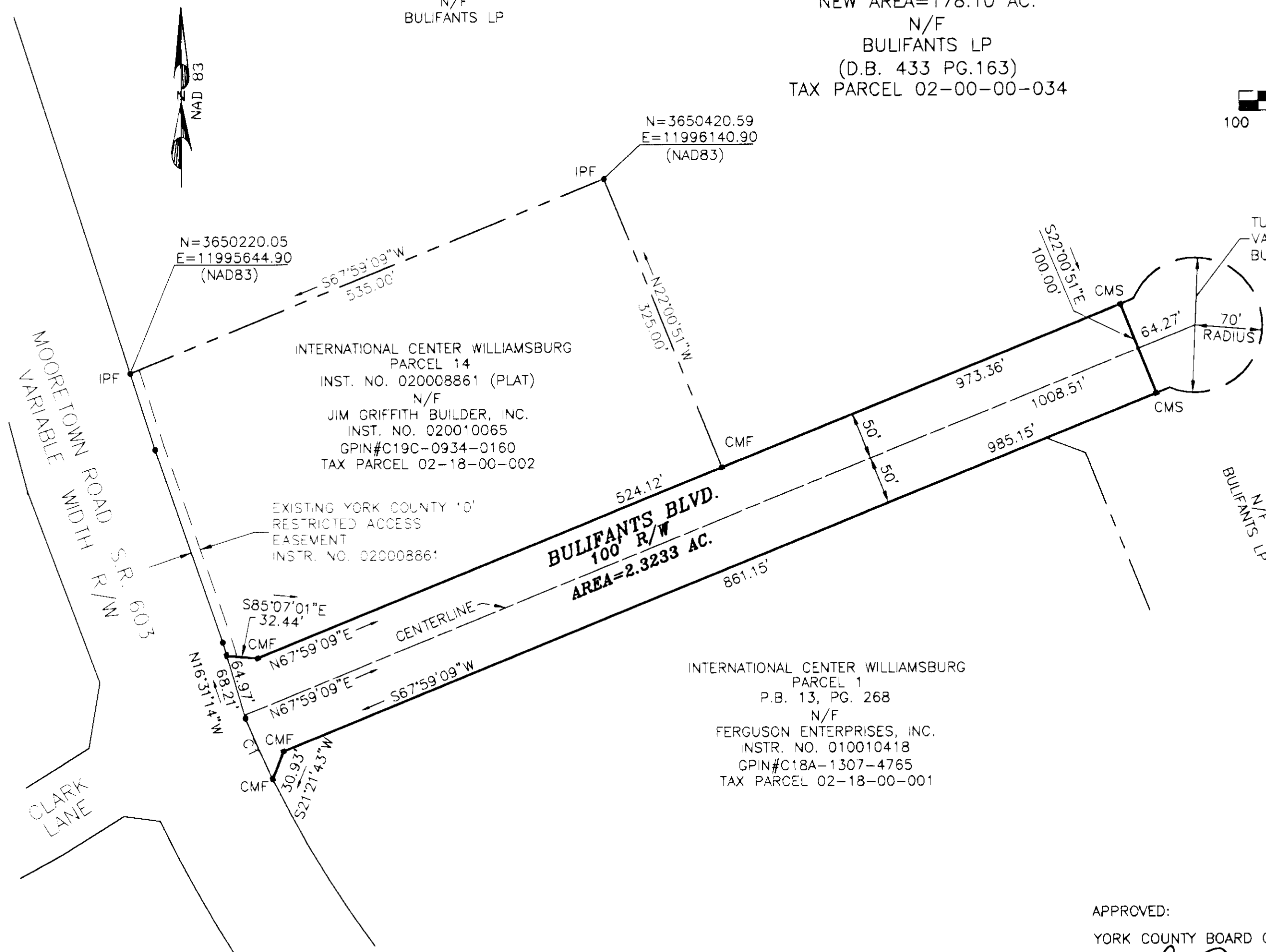
Engineers • Planners • Surveyors
Landscape Architects • Environmental Consultants
4029 IRONBOUND ROAD SUITE 100
WILLIAMSBURG, VIRGINIA 23188
(757) 253-2975 FAX (757) 229-0049

GRAPHIC SCALE 1"=100'



PARCEL 2
N/F
BULIFANTS LP

PARCEL 2
OLD AREA=180.42 AC.
NEW AREA=178.10 AC.
N/F
BULIFANTS LP
(D.B. 433 PG.163)
TAX PARCEL 02-00-00-034



INTERNATIONAL CENTER WILLIAMSBURG
PARCEL 14
INST. NO. 020008861 (PLAT)
N/F
JIM GRIFFITH BUILDER, INC.
INST. NO. 020010065
GPIN#C19C-0934-0160
TAX PARCEL 02-18-00-002

EXISTING YORK COUNTY 10'
RESTRICTED ACCESS
EASEMENT
INSTR. NO. 020008861

BULIFANTS BLVD.
100' R/W
AREA=2.3233 AC.

INTERNATIONAL CENTER WILLIAMSBURG
PARCEL 1
P.B. 13, PG. 268
N/F
FERGUSON ENTERPRISES, INC.
INSTR. NO. 010010418
GPIN#C18A-1307-4765
TAX PARCEL 02-18-00-001



APPROVED:
YORK COUNTY BOARD OF SUPERVISORS

BY: *Al Maddalena*
PLAT APPROVING AGENT

DATE: 1/6/04

STATE OF VIRGINIA, COUNTY OF YORK
IN THE CLERK'S OFFICE OF THE CIRCUIT COURT FOR THE
COUNTY OF YORK THE 9th DAY OF January 2004, THIS
MAP WAS PRESENTED AND ADMITTED TO RECORD AS THE LAW
DIRECTS AS INSTRUMENT NO. CHCCCB 66

TESTED: *Lynn S. Jenkins* 8:59 am
CLERK

BY: *Julius Carson D.C.*