



Vanasse Hangen Brustlin, Inc.

Transportation
Land Development
Environmental Services

11832 Rock Landing Drive, Suite 203
Newport News, Virginia 23606
757 873 3386 • FAX 757 873 0757

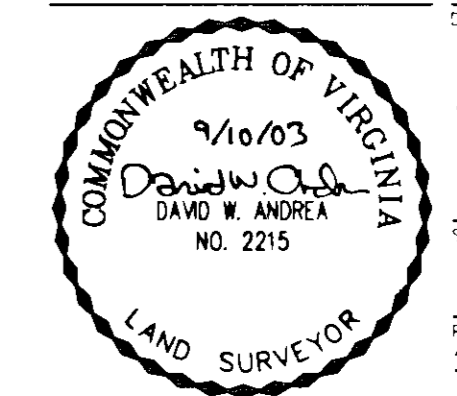
PLAT INSTRUMENT #04 0003502

PROPERTY OF
JOHN G & DOROTHY G KING
ZONE GB
00927
REMAINDER OF 24-00-00-082

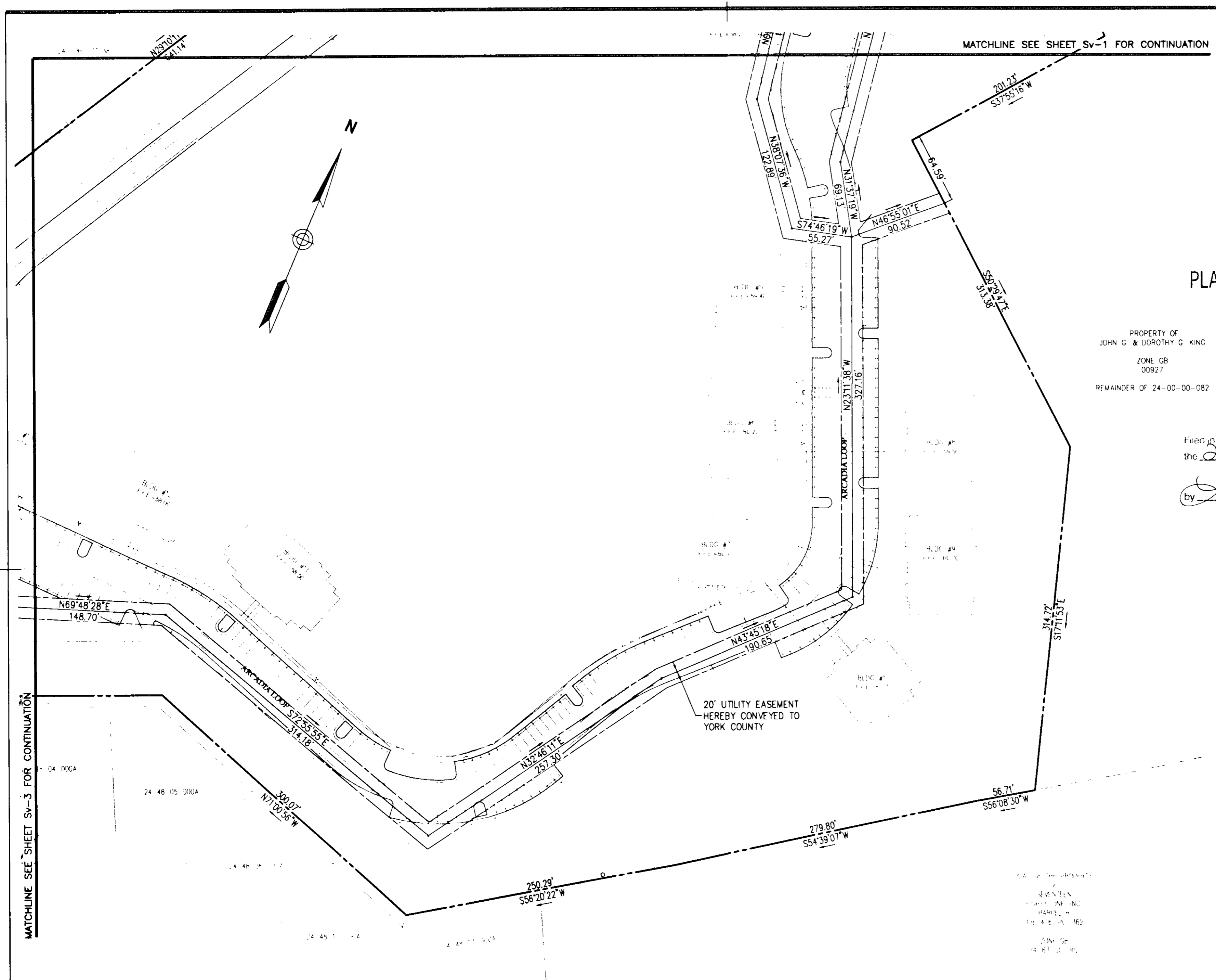
Filed in the Clerk's Office, Circuit Court, York Co., V.
the 23 day of February, 2004
Attest: Lynn S. Jenkins, Clerk 11:26 am
by David W. Andrea D.C.

1	Per County Memorandum 9/3/03	9/5/03	DWA
No.	Revision	Date	Appvd
Designed by	DAC	Drawn by	DWP
Checked by		Reviewed by	DWA
CAD checked by		Approved by	DWA
Scale	1"=60'	Date	AUGUST 8, 2003
Project Title			

PLAT SHOWING
20' UTILITY EASEMENT
TO BE CONVEYED FROM
652 LLC
TO
YORK COUNTY
VIRGINIA
FOR
CLAIRMONT
APARTMENT HOMES
NELSON MAGISTERIAL DISTRICT
COUNTY OF YORK, VIRGINIA



Drawing Number
Sv-2
Sheet of
2 of 3
Project Number
30969.00



- NOTES:
1. THIS PLAT IS INTENDED TO REPRESENT A 20' UTILITY EASEMENT ONLY. ALL BOUNDARY INFORMATION IS TAKEN FROM RECORDS AND DOES NOT REPRESENT A BOUNDARY SURVEY.
 2. ALL EASEMENT DIMENSIONS UNLESS OTHERWISE NOTED ARE MEASURED FROM THE EASEMENT CENTERLINE.
 3. PROPERTY GPIN: Q08A-2469-4325

