

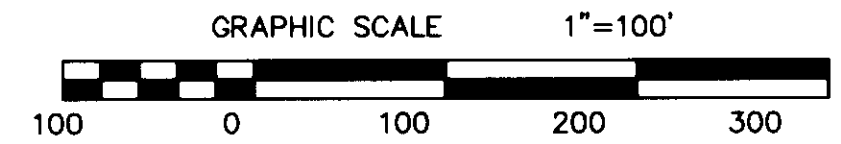


REMAINING LAND OF  
 VIRGINIA ELECTRIC AND  
 POWER COMPANY  
 TAX MAP NO. 24-00-00-204  
 GPIN: R08A-2224-3788  
 ZONED: IG  
 D.B. 342, PG. 586  
 P.B. 8, PG. 439  
 OLD AREA=75.2429 AC.  
 NEW AREA=51.6184 AC.

SUBDIVISION OF  
 YORK RIVER  
 COMMERCE PARK  
 PARCEL 6  
 NELSON DISTRICT YORK COUNTY, VIRGINIA  
 DATE: 02/26/04 SCALE: 1"=100'  
 SHEET 2 OF 3

**LANDMARK**  
**DESIGN GROUP**

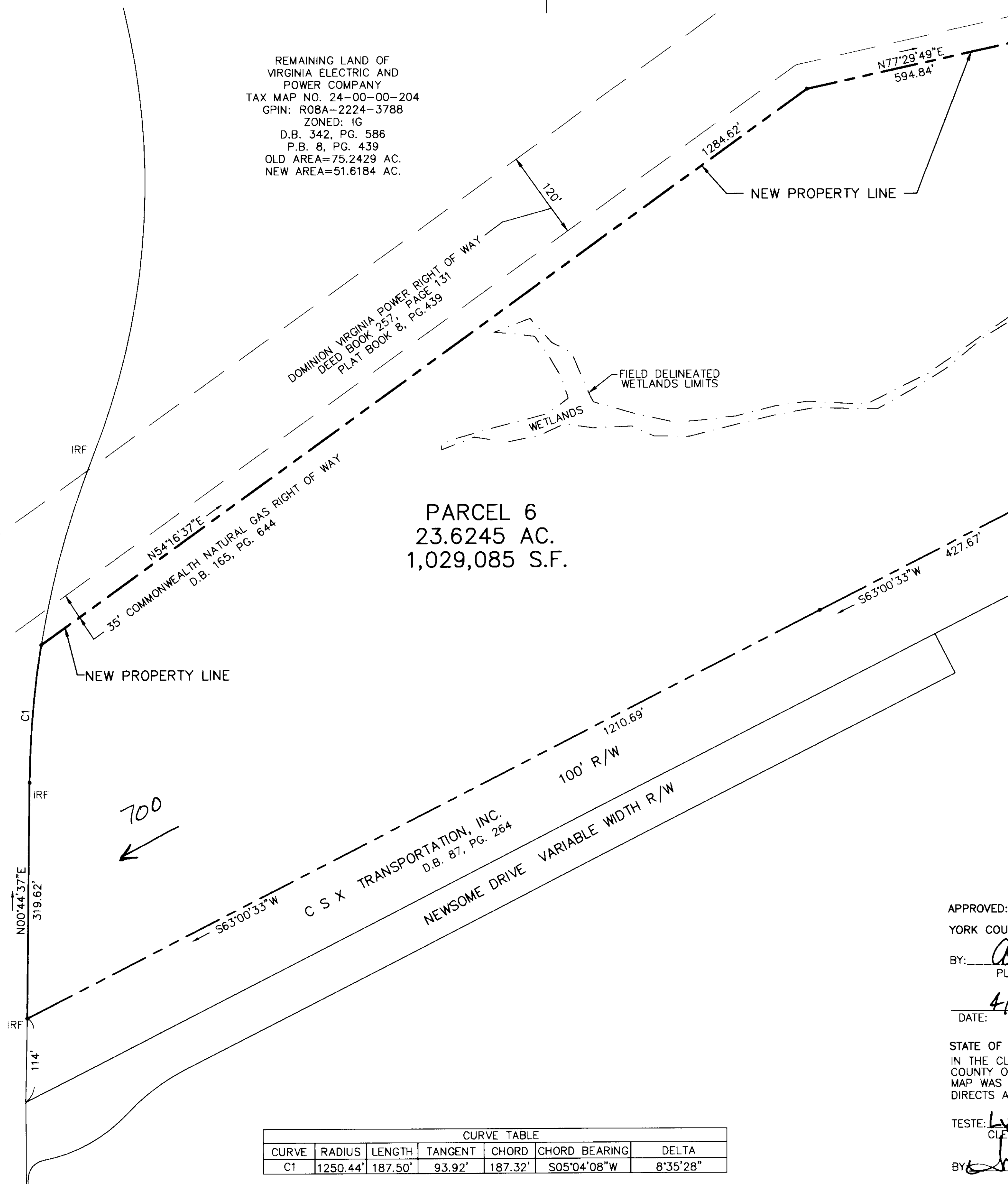
Engineers • Planners • Surveyors  
 Landscape Architects • Environmental Consultants  
 4029 IRONBOUND ROAD SUITE 100  
 WILLIAMSBURG, VIRGINIA 23188  
 (757) 253-2975 FAX: (757) 229-0049



SHEET 3

MATCHLINE

OLD YORK-HAMPTON HWY. S.R. 634  
 VARIABLE WIDTH R/W



PARCEL 6  
 23.6245 AC.  
 1,029,085 S.F.



CURVE TABLE						
CURVE	RADIUS	LENGTH	TANGENT	CHORD	CHORD BEARING	DELTA
C1	1250.44'	187.50'	93.92'	187.32'	S05°04'08"W	8°35'28"

APPROVED:  
 YORK COUNTY BOARD OF SUPERVISORS  
 BY: Al Maddalena  
 PLAT APPROVING AGENT  
 DATE: 4/29/04

STATE OF VIRGINIA, COUNTY OF YORK  
 IN THE CLERK'S OFFICE OF THE CIRCUIT COURT FOR THE  
 COUNTY OF YORK THE 4th DAY OF May 2004, THIS  
 MAP WAS PRESENTED AND ADMITTED TO RECORD AS THE LAW 12:56 pm  
 DIRECTS AS INSTRUMENT NO. 040009182

TESTE: Lyn S Jenkins  
 CLERK  
 BY: Julia Connor D.C.