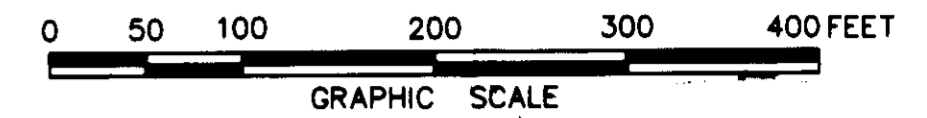


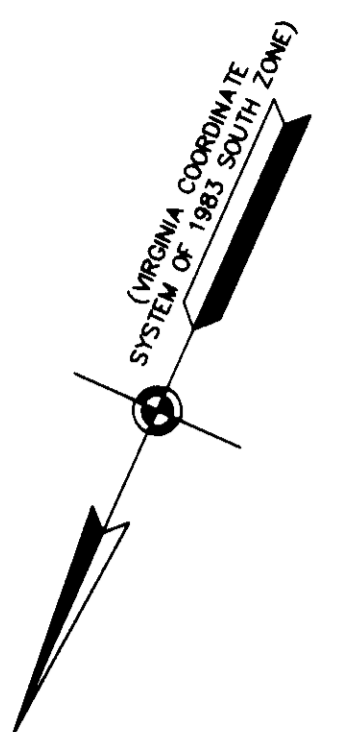
SUBDIVISION & BOUNDARY LINE ADJUSTMENT OF THE PROPERTIES OF TRIPLE FEATURE ASSOCIATES, A VIRGINIA LIMITED PARTNERSHIP & FOUR WAY ASSOCIATES, A VIRGINIA LIMITED PARTNERSHIP

NELSON DISTRICT - COUNTY OF YORK, VIRGINIA SCALE: 1" = 100' MAY 30, 2003



THE SIRINE GROUP, LTD. SURVEYORS • ENGINEERS • PLANNERS 4794 GEORGE WASHINGTON MEMORIAL HIGHWAY U.S. ROUTE 17 P.O. BOX 450 WHITE MARSH, VIRGINIA 23183 SHEET 2 OF 2

COMMON AREA WOOD TOWNE QUARTERS PHASE I (P.B.10, P.383-385; D.B.615, P.338) TAX PARCEL 24-55-01-000A



NOTES: STORM WATER MANAGEMENT BASIN ESM'T. TO BENEFIT PARCEL 1 & 2 AND PARCEL IIA & IIB & VAR. WIDTH PRIVATE DRAINAGE ESM'T. TO BE CONVEYED TO THE GENERALS WAY PROPERTY ASSOCIATION

NOW OR FORMERLY DAVID W. PICKETT (D.B.140, P.337; INSTR# 010000049) TAX MAP 24-00-00-088

STORM WATER MANAGEMENT BASIN ESM'T. TO BENEFIT PARCEL 1 & 2 AND PARCEL IIA & IIB & VAR. WIDTH PRIVATE DRAINAGE ESM'T. TO BE CONVEYED TO THE GENERALS WAY PROPERTY ASSOCIATION

NOW OR FORMERLY CITY OF NEWPORT NEWS (D.B.63, P.86; P.B.12, P.221-222; INSTR# 010012962) TAX MAP 23-00-00-014

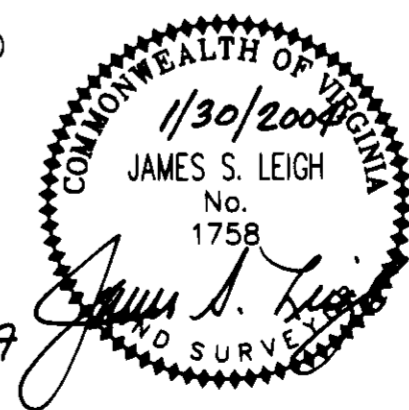
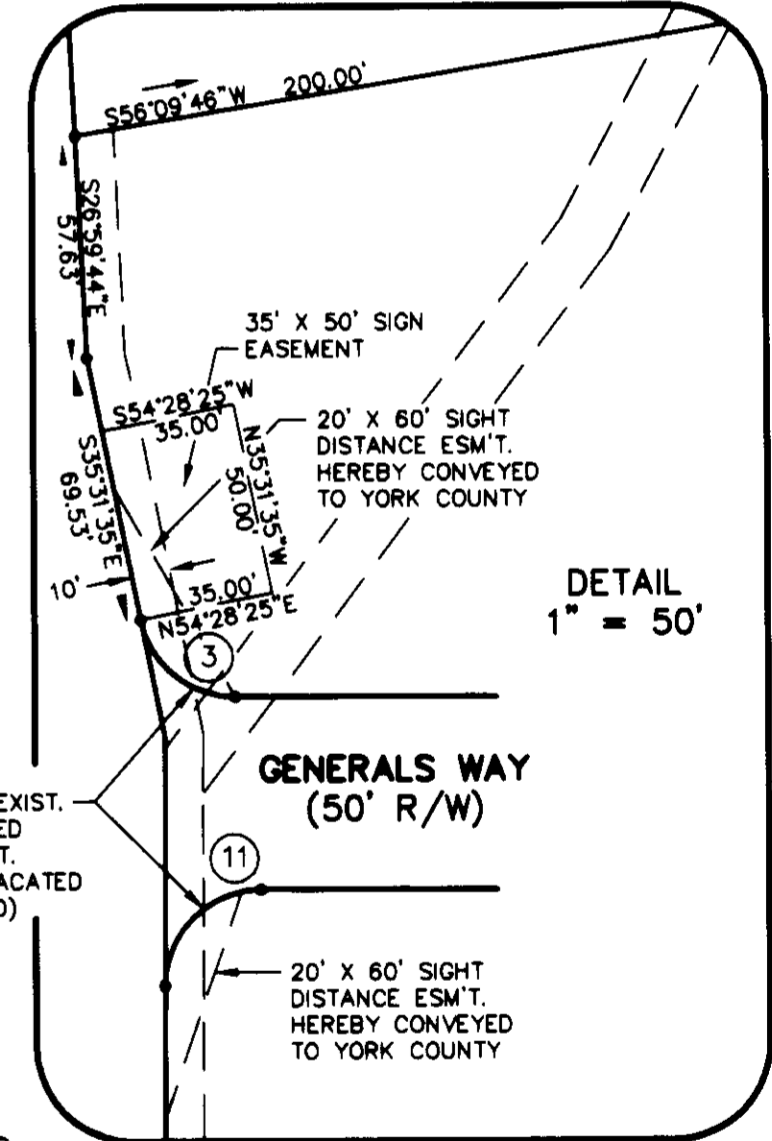
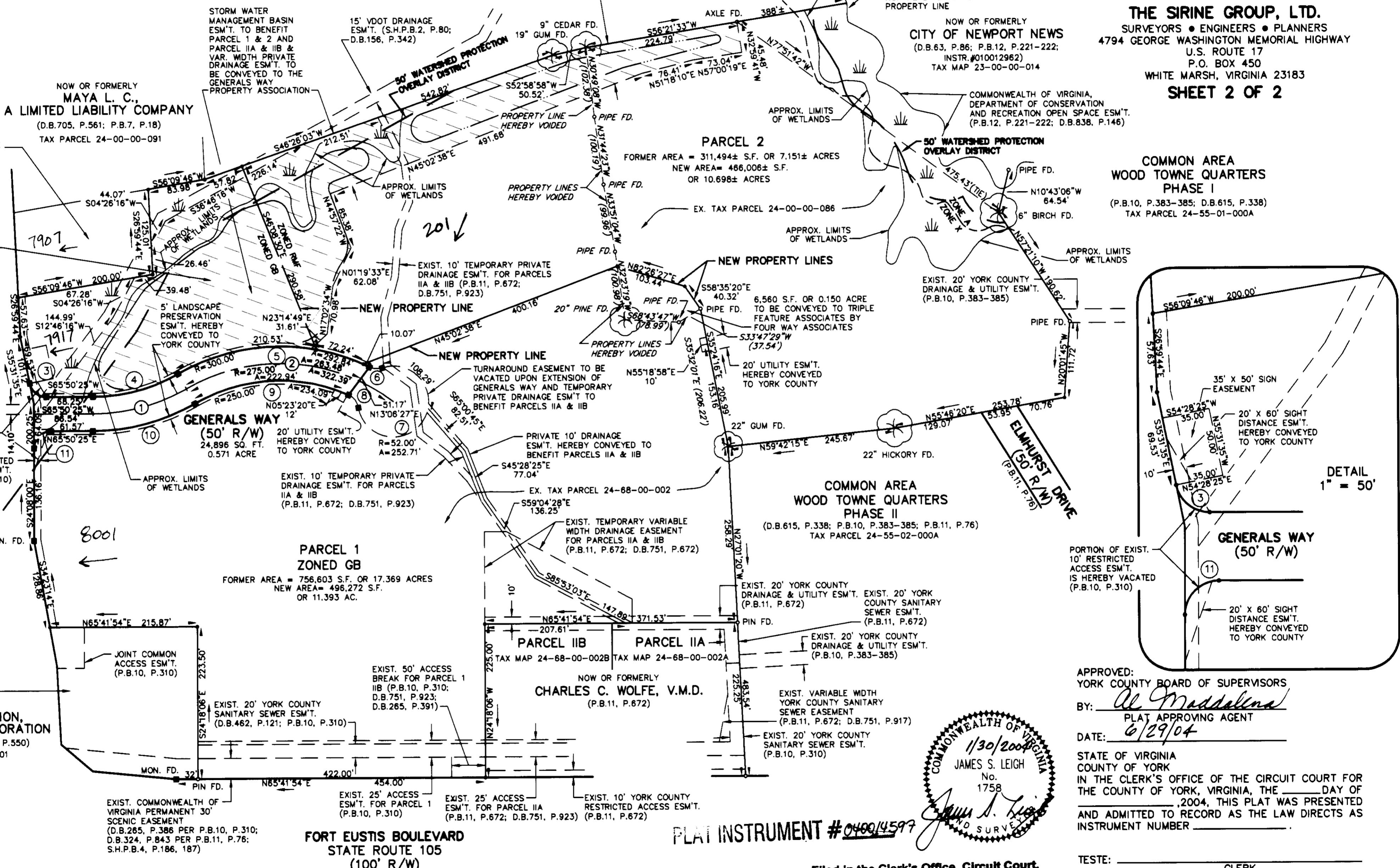
COMMONWEALTH OF VIRGINIA, DEPARTMENT OF CONSERVATION AND RECREATION OPEN SPACE ESM'T. (P.B.12, P.221-222; D.B.838, P.146)

NOW OR FORMERLY MAYA L. C., A LIMITED LIABILITY COMPANY (D.B.705, P.561; P.B.7, P.18) TAX PARCEL 24-00-00-091

NOW OR FORMERLY TRIBE PROPERTIES, LLC (D.B.1091, P.955; P.B.7, P.18) TAX PARCEL 24-00-00-0800

COMMON AREA ZONED GB FORMER AREA = 756,603 S.F. OR 17.369 ACRES NEW AREA = 80,923 S.F. OR 1.858 AC.

GEORGE WASHINGTON MEMORIAL HIGHWAY U.S. ROUTE 17 (VARIABLE WIDTH R/W)



PLAT INSTRUMENT # 040014597

PARCEL 1 = 496,272 S.F. OR 11.393 ACRES
PARCEL 2 = 466,006± S.F. OR 10.698± ACRES
COMMON AREA = 80,923 S.F. OR 1.858 ACRES
GENERALS WAY = 24,896 S.F. OR 0.571 ACRE
TOTAL SUBDIVIDED AREA = 24.520± ACRES

APPROVED: YORK COUNTY BOARD OF SUPERVISORS BY: *Al Madellina* PLAT APPROVING AGENT DATE: 6/29/04

STATE OF VIRGINIA COUNTY OF YORK IN THE CLERK'S OFFICE OF THE CIRCUIT COURT FOR THE COUNTY OF YORK, VIRGINIA, THE _____ DAY OF _____, 2004, THIS PLAT WAS PRESENTED AND ADMITTED TO RECORD AS THE LAW DIRECTS AS INSTRUMENT NUMBER _____

TESTE: _____ CLERK

PROPERTY IS ASSESSOR'S PARCEL NUMBER: 24-68-00-002; GPIN: Q08B-3803-3232 24-00-00-086; GPIN: Q08B-3335-2700

Filed in the Clerk's Office, Circuit Court, York Co. - Poquoson VA the 15th day of July, 2004 Teste: Lynn S. Jenkins, Clerk 10:49 am by *Anchala M. Chinnor* D.C.