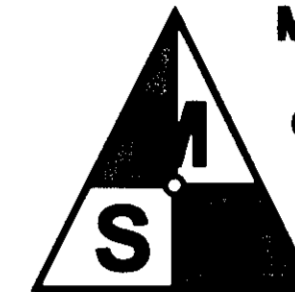




PLAT BOOK 11, PAGE 433

**BOUNDARY LINE ADJUSTMENT
BETWEEN THE PROPERTIES OF
BETTY J. HAMM
AND THE HEIRS OF
JAMES W. HICKMAN**

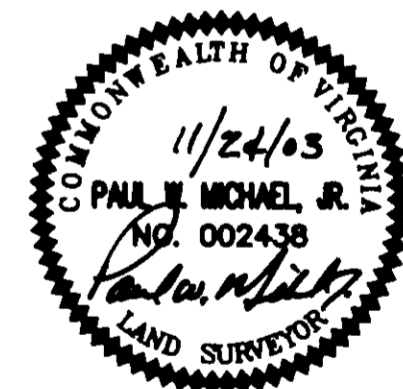
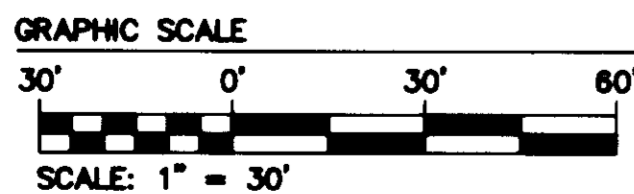
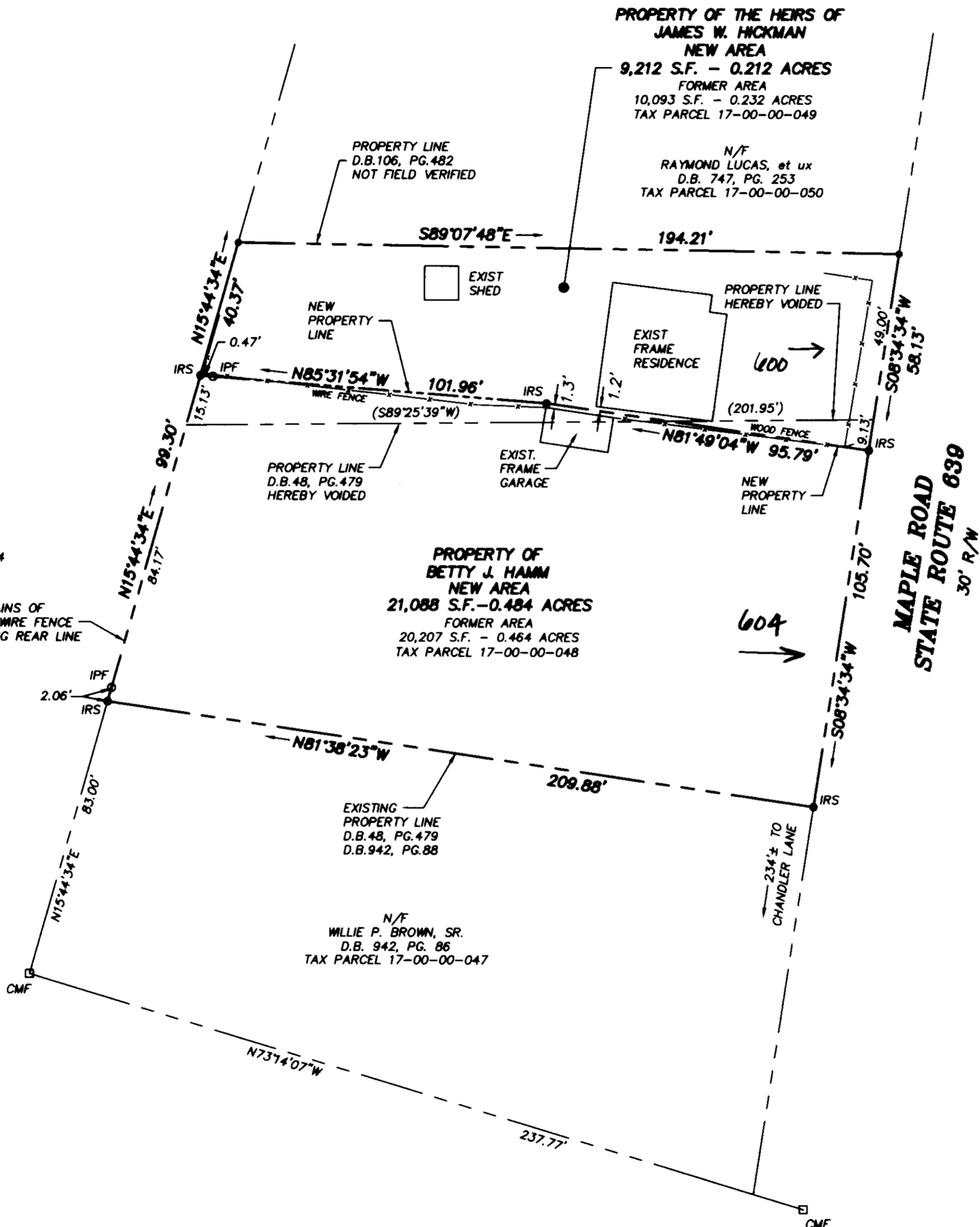
NELSON DISTRICT COUNTY OF YORK, VIRGINIA
DATE: NOVEMBER 24, 2003 SCALE: 1"=30'
PROJECT NUMBER: 03-033
SHEET 2 OF 2



**MICHAEL SURVEYING
& MAPPING, P.C.**
610 THIMBLE SHOALS BLVD
SUITE 203-D
NEWPORT NEWS, VA. 23606
TEL 757.873.1762
FAX 757.873.1772

N/F
CITY OF NEWPORT NEWS
P.B. 11, PG. 431-433
TAX PARCEL 17-00-00-154

REMAINS OF
OLD WIRE FENCE
ALONG REAR LINE



**APPROVED:
YORK COUNTY BOARD OF SUPERVISORS**

BY: Al Maddalena, PLAT APPROVING AGENT

DATE: 7/23/04

**STATE OF VIRGINIA
COUNTY OF YORK**

POQUOSON
IN THE CLERK'S OFFICE OF THE CIRCUIT COURT FOR THE
COUNTY OF YORK THE 19th DAY OF August, 2004
THIS MAP WAS PRESENTED AND ADMITTED TO RECORD AS THE
LAW DIRECTS, AS INSTRUMENT NO. 040017670 H:36AM
TESTE: Lynn S. Jenkins, CLERK
BY: Archuleta M. Chinnamoch, DC