

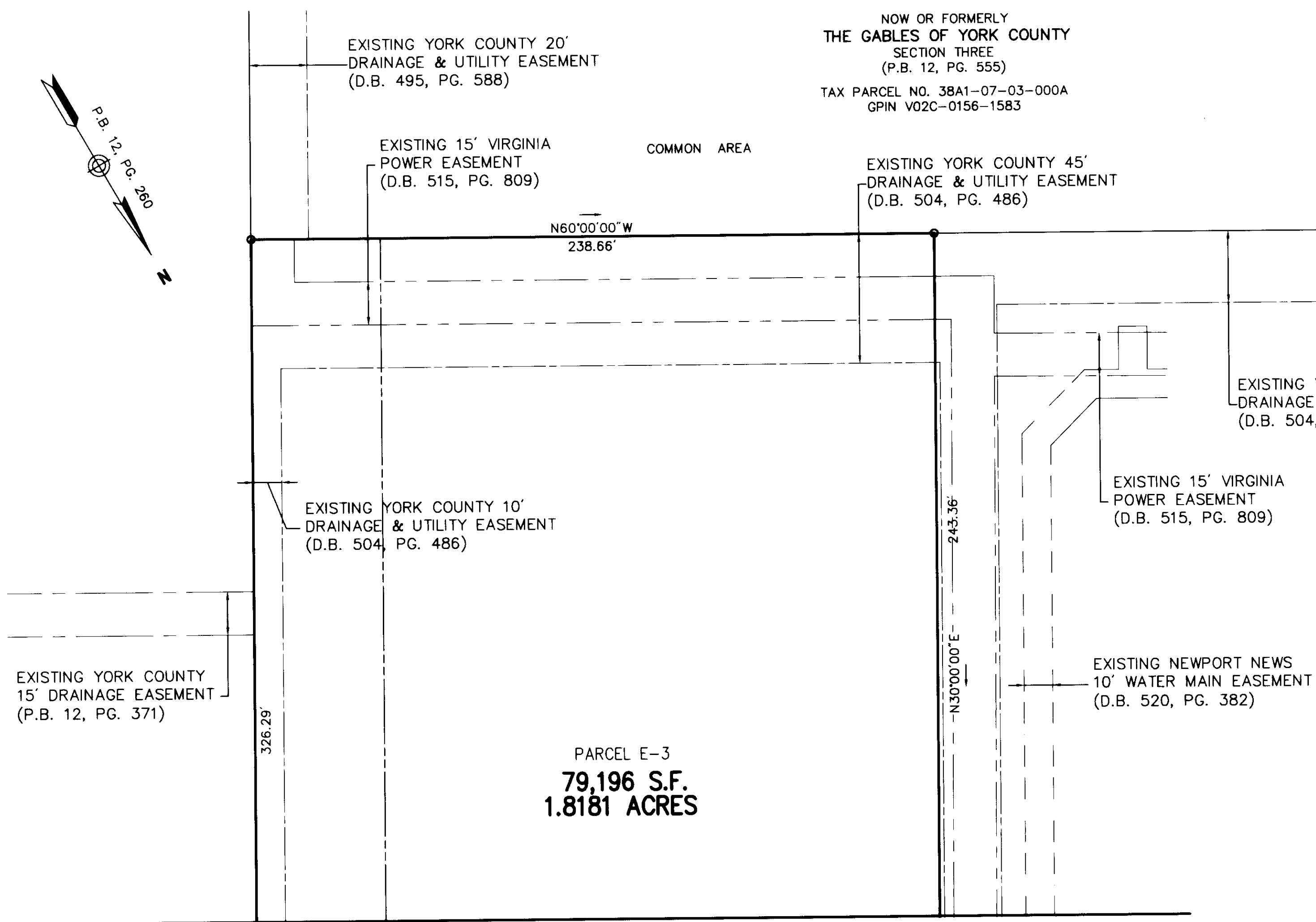
SUBDIVISION OF
PARCEL E
BEING THE PROPERTY OF
SHADY BANKS LAND, L.L.C.
A VIRGINIA LIMITED LIABILITY COMPANY
BETHEL MAGISTERIAL DISTRICT
COUNTY OF YORK, VIRGINIA

DATE: 10/17/03 SHEET 3 OF 3 SCALE: 1"=30'

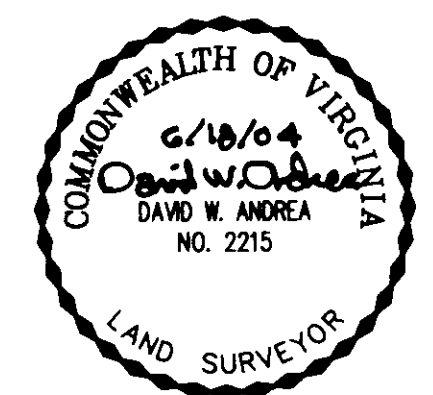
PROJECT NO: 31514.00 DRAWN BY: DWP

VHB Vanasse Hangen Brustlin, Inc.
Transportation Land Development Environmental Services
11832 Rock Landing Drive, Suite 203
Newport News, Virginia 23606-4231
(757) 873-3386 • FAX (757) 873-0757

NOW OR FORMERLY
THE GABLES OF YORK COUNTY
SECTION THREE
(P.B. 12, PG. 555)
TAX PARCEL NO. 38A1-07-03-000A
GPIN V02C-0156-1583



REVISION: 08/05/04



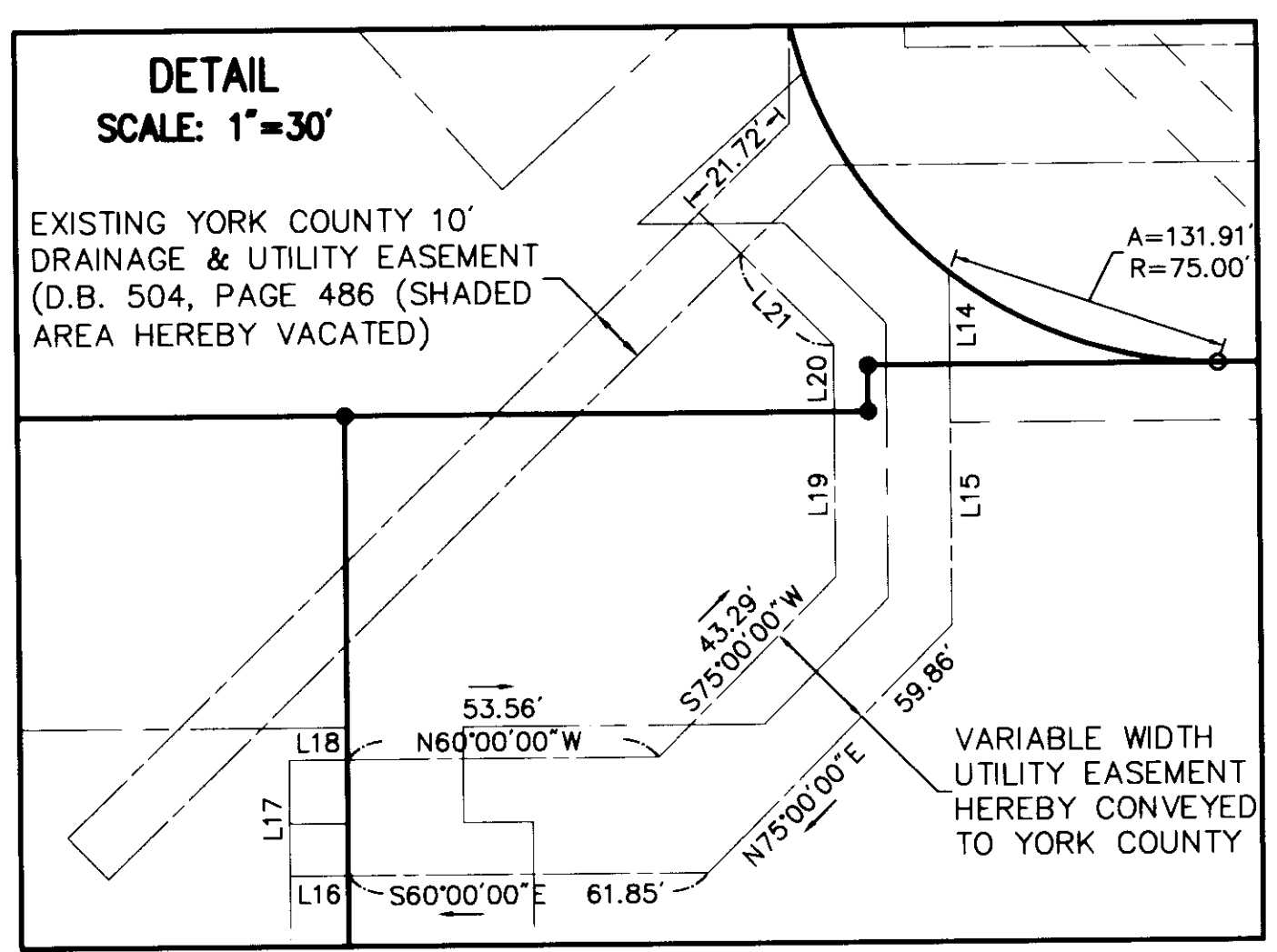
NOW OR FORMERLY
LITCHFIELD SHADY BANKS, LLC
(INSTRUMENT NUMBER 000010208)
PARCEL D
(P.B. 12, PG. 260)
TAX PARCEL NO. 38A1-09-00-000D
GPIN U02D-4828-2010

Legend

- D.B. DEED BOOK
- P.B. PLAT BOOK
- PG. PAGE
- S.F. SQUARE FEET
- IRON PIN FOUND
- IRON PIN SET



MATCHLINE - SEE SHEET 2



LINE	LENGTH	BEARING
L1	38.47'	N78°02'20"E
L2	25.15'	N60°00'00"W
L3	24.44'	N15°00'00"W
L4	7.29'	N30°00'00"E
L5	40.05'	N30°00'00"E
L6	30.24'	N75°00'00"E
L7	51.79'	S60°00'00"E
L8	16.50'	N30°00'00"E
L9	12.00'	N60°00'00"W
L10	12.00'	S60°00'00"E
L11	10.00'	S60°00'00"E

LINE	LENGTH	BEARING
L12	10.00'	N60°00'00"W
L13	16.50'	S30°00'00"W
L14	15.75'	N30°00'00"E
L15	44.60'	N30°00'00"E
L16	10.00'	S60°00'00"E
L17	20.00'	S30°00'00"W
L18	10.00'	N60°00'00"W
L19	28.39'	S30°00'00"W
L20	11.49'	S30°00'00"W
L21	22.37'	S15°00'00"E

Approved:
York County Board Of Supervisors

BY: Al. Madalena
PLAT APPROVING AGENT

DATE: 8/16/04

State Of Virginia
County Of York

IN THE CLERK'S OFFICE OF THE CIRCUIT COURT FOR THE COUNTY OF YORK, THE 8th DAY OF Sept, 2004. THIS MAP WAS PRESENTED AND ADMITTED TO RECORD AS THE LAW DIRECTS AS INSTRUMENT NUMBER 20019164

TESTE: Lynn S. Jenkins
CLERK

BY: James Carson D.C.