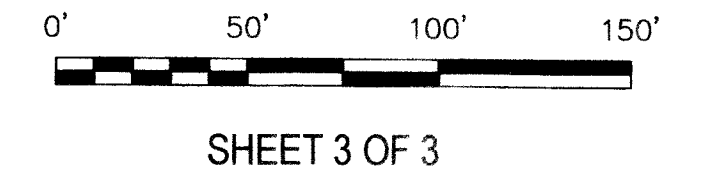


N OR F
JAMES I. HARP
(INSTR. #060004605)
TM #11-00-00-014C
ZONING: R13

CURVE TABLE						
NO.	DELTA	RADIUS	ARC	TAN	CHORD	CHORD BEARING
C1	89°51'34"	25.00'	39.21'	24.94'	35.31'	N 29°43'52" E
C2	90°00'00"	25.00'	39.27'	25.00'	35.36'	N 60°11'55" W
C3	03°12'31"	125.00'	7.00'	3.50'	7.00'	S73°11'49" W
C4	34°10'39"	125.00'	74.56'	38.43'	73.46'	S 54°30'14" W
C5	37°23'10"	125.00'	81.56'	42.29'	80.12'	S 56°06'30" W
C6	70°31'44"	25.00'	30.77'	17.68'	28.87'	S 02°09'03" W
C7	117°07'51"	50.00'	102.22'	81.80'	85.32'	N 25°27'07" E
C8	51°40'56"	50.00'	45.10'	24.22'	43.59'	S 70°08'29" E
C9	22°55'06"	50.00'	20.00'	10.14'	19.87'	S 32°50'28" E
C10	22°55'06"	50.00'	20.00'	10.14'	19.87'	S 09°55'22" E
C11	35°52'44"	50.00'	31.31'	16.19'	30.80'	S 19°28'33" W
C12	250°31'44"	50.00'	218.63'	---	---	---
C13	09°28'25"	175.00'	28.94'	14.50'	28.90'	S 42°09'06" W
C14	12°06'50"	175.00'	37.00'	18.57'	36.93'	S 52°56'45" W
C15	12°49'40"	175.00'	39.18'	19.67'	39.10'	S 65°25'00" W
C16	02°58'15"	175.00'	9.07'	4.54'	9.07'	S 73°18'58" W
C17	37°23'10"	175.00'	114.19'	59.21'	112.17'	N 56°06'30" E
C18	90°00'00"	25.00'	39.27'	25.00'	35.36'	N 29°48'05" E
C19	69°25'48"	25.00'	30.29'	17.32'	28.47'	N 49°54'49" W
C20	69°04'37"	49.00'	59.08'	33.73'	55.56'	S 50°05'25" E
C21	37°23'10"	150.00'	97.88'	50.75'	96.15'	N 56°06'30" E
C22	02°47'50"	1462.69'	71.41'	35.71'	71.40'	N 82°11'14" E
C23	17°56'07"	1235.73'	386.82'	195.00'	385.24'	S 88°50'43" E

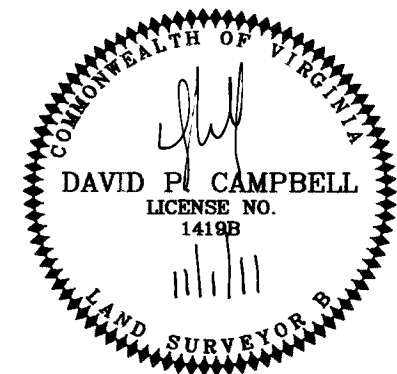
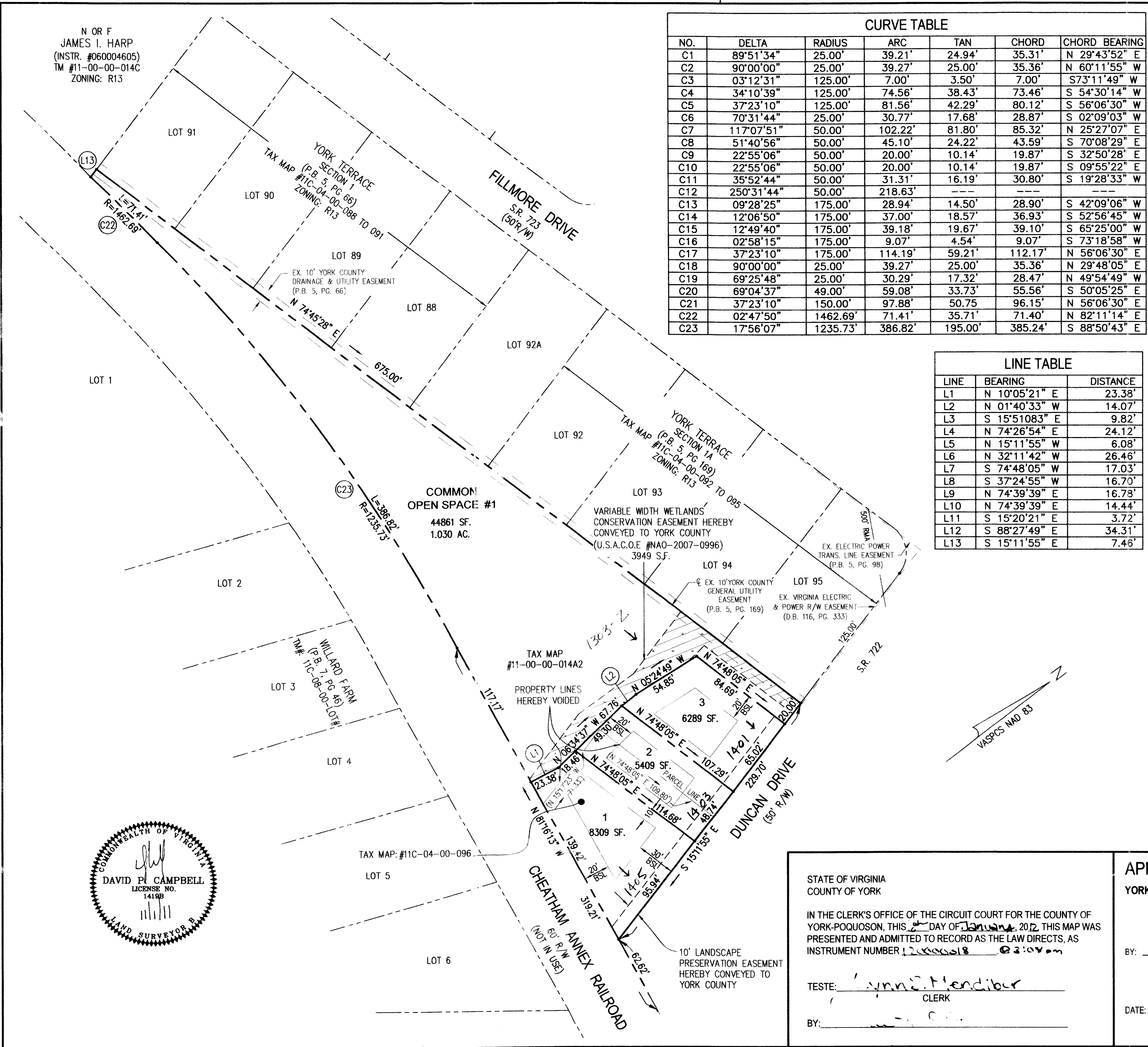
SUBDIVISION OF
SUNSET MEADOWS
(AFFORDABLE HOUSING INCENTIVE PROVISIONS)
BRUTON DISTRICT
COUNTY OF YORK, VIRGINIA
DECEMBER 15, 2010 SCALE: 1"=50'
CAMPBELL LAND SURVEYING, INC.
P.O. BOX 855
YORKTOWN, VIRGINIA 23692
(757) 890-0837



LINE TABLE		
LINE	BEARING	DISTANCE
L1	N 10°05'21" E	23.38'
L2	N 01°40'33" W	14.07'
L3	S 15°51'083" E	9.82'
L4	N 74°26'54" E	24.12'
L5	N 15°11'55" W	6.08'
L6	N 32°11'42" W	26.46'
L7	S 74°48'05" W	17.03'
L8	S 37°24'55" W	16.70'
L9	N 74°39'39" E	16.78'
L10	N 74°39'39" E	14.44'
L11	S 15°20'21" E	3.72'
L12	S 88°27'49" E	34.31'
L13	S 15°11'55" E	7.46'

LEGEND

- PROPERTY LINE
- IRON PIPE FOUND / IRON ROD FOUND
- IRON ROD SET
- CONCRETE MONUMENT SET
- BUILDING SETBACK LINE
- TYPE 35 (35-FOOT) TRANSITIONAL BUFFER
- RESOURCE PROTECTION AREA (RPA) / RESOURCE MANAGEMENT AREA (RMA)
- EXIST. YORK COUNTY DRAINAGE & UTILITY EASEMENT
- DRAINAGE AND/OR UTILITY EASEMENT HEREBY CONVEYED TO YORK COUNTY
- PRIVATE DRAINAGE EASEMENT (H.O.A.)
- 10' LANDSCAPE PRESERVATION EASEMENT
- VARIABLE WIDTH WETLANDS CONSERVATION EASEMENT



STATE OF VIRGINIA
COUNTY OF YORK

IN THE CLERK'S OFFICE OF THE CIRCUIT COURT FOR THE COUNTY OF YORK-POQUOSON, THIS 2ND DAY OF January, 2012, THIS MAP WAS PRESENTED AND ADMITTED TO RECORD AS THE LAW DIRECTS, AS INSTRUMENT NUMBER 12000018 @ 2:04 pm

TESTE: Ann S. Hendiber
CLERK

BY: _____

APPROVED
YORK COUNTY BOARD OF SUPERVISORS

BY: W. J. Adda-Cue
PLAT APPROVING AGENT

DATE: 12/21/11