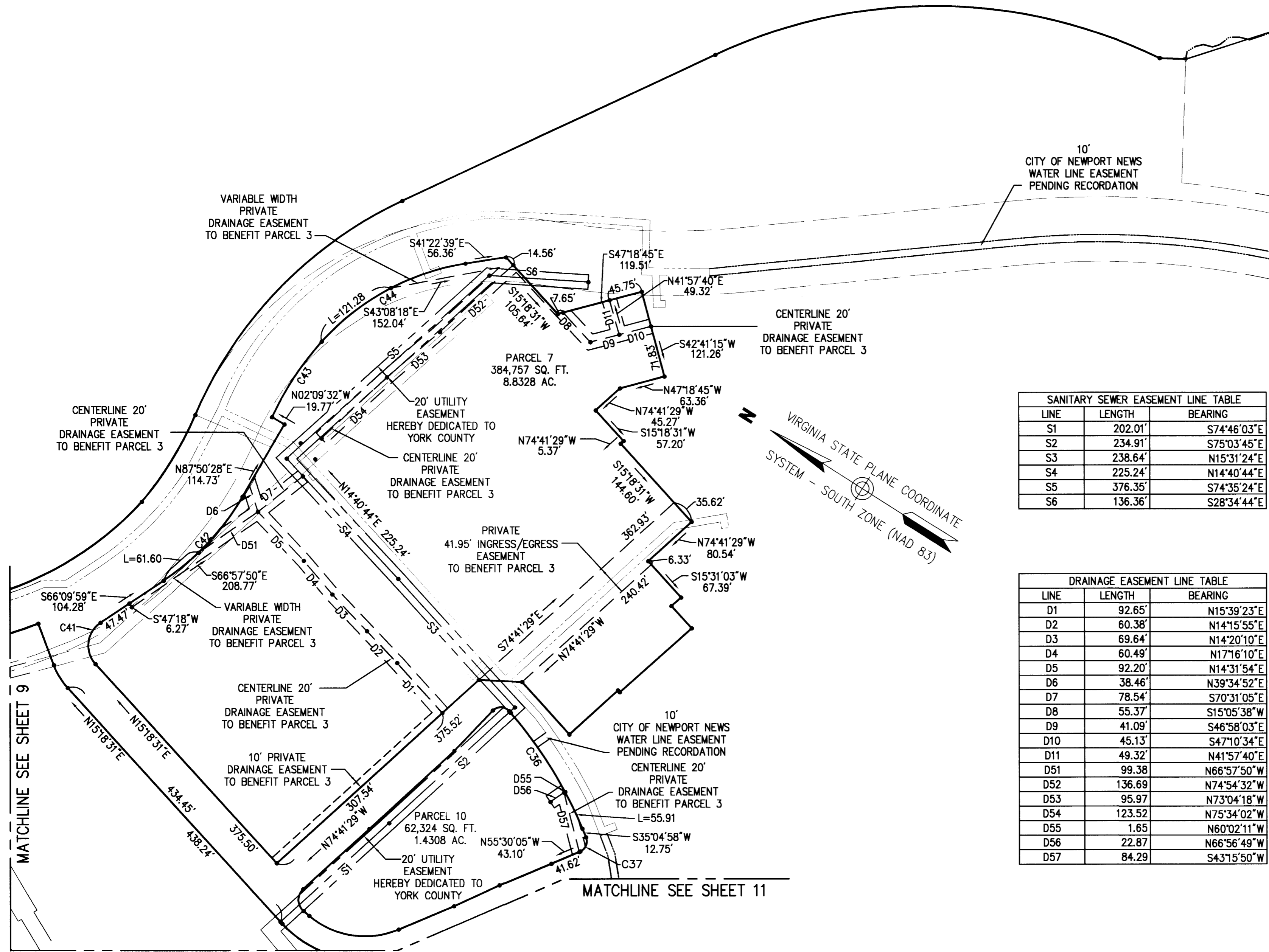


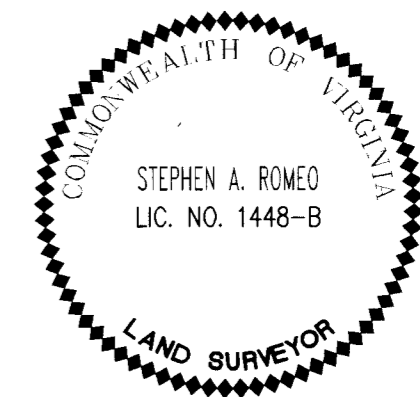
**SUBDIVISION
OF THE PROPERTY OF
MARQUIS WILLIAMSBURG
RE HOLDING LLC**

BRUTON DISTRICT, YORK COUNTY, VIRGINIA
DATE: 10/21/11 SCALE: 1"=100'
SHEET 10 OF 11



SANITARY SEWER EASEMENT LINE TABLE		
LINE	LENGTH	BEARING
S1	202.01'	S74°46'03"E
S2	234.91'	S75°03'45"E
S3	238.64'	N15°31'24"E
S4	225.24'	N14°40'44"E
S5	376.35'	S74°35'24"E
S6	136.36'	S28°34'44"E

DRAINAGE EASEMENT LINE TABLE		
LINE	LENGTH	BEARING
D1	92.65'	N15°39'23"E
D2	60.38'	N14°15'55"E
D3	69.64'	N14°20'10"E
D4	60.49'	N17°16'10"E
D5	92.20'	N14°31'54"E
D6	38.46'	N39°34'52"E
D7	78.54'	S70°31'05"E
D8	55.37'	S15°05'38"W
D9	41.09'	S46°58'03"E
D10	45.13'	S47°10'34"E
D11	49.32'	N41°57'40"E
D51	99.38'	N66°57'50"W
D52	136.69'	N74°54'32"W
D53	95.97'	N73°04'18"W
D54	123.52'	N75°34'02"W
D55	1.65'	N60°02'11"W
D56	22.87'	N66°56'49"W
D57	84.29'	S43°15'50"W



Vanasse Hangen Brustlin, Inc.
Transportation Land Development Environmental Services
351 McLaws Circle, Suite 3
Williamsburg, Virginia 23185
(757) 220-0500 • FAX (757) 220-8544

APPROVED:
YORK COUNTY BOARD OF SUPERVISORS
BY: W. Taddema
PLAT APPROVING AGENT
DATE: 1/19/12

STATE OF VIRGINIA, COUNTY OF YORK
IN THE CLERK'S OFFICE OF THE CIRCUIT COURT FOR THE
COUNTY OF YORK-POQUOSON THE 19 DAY OF
January 2012, THIS MAP WAS PRESENTED AND
ADMITTED TO RECORD AS THE LAW DIRECTS AS
INSTRUMENT NO. LA 19000 1612
TESTE: Lyan S. Neandibia
CLERK
BY: Alan S. Taddema

2012 JAN 19 09:49