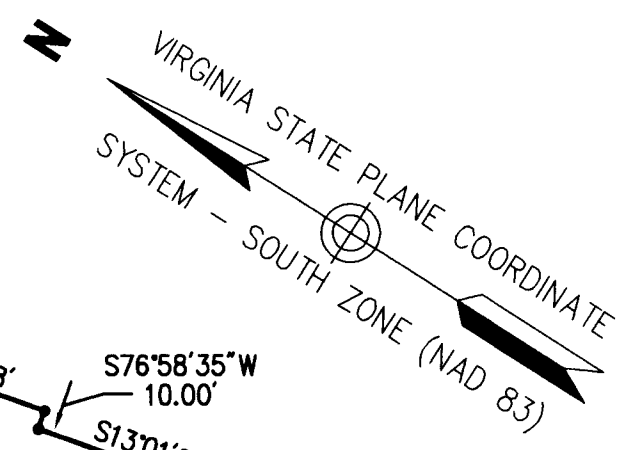
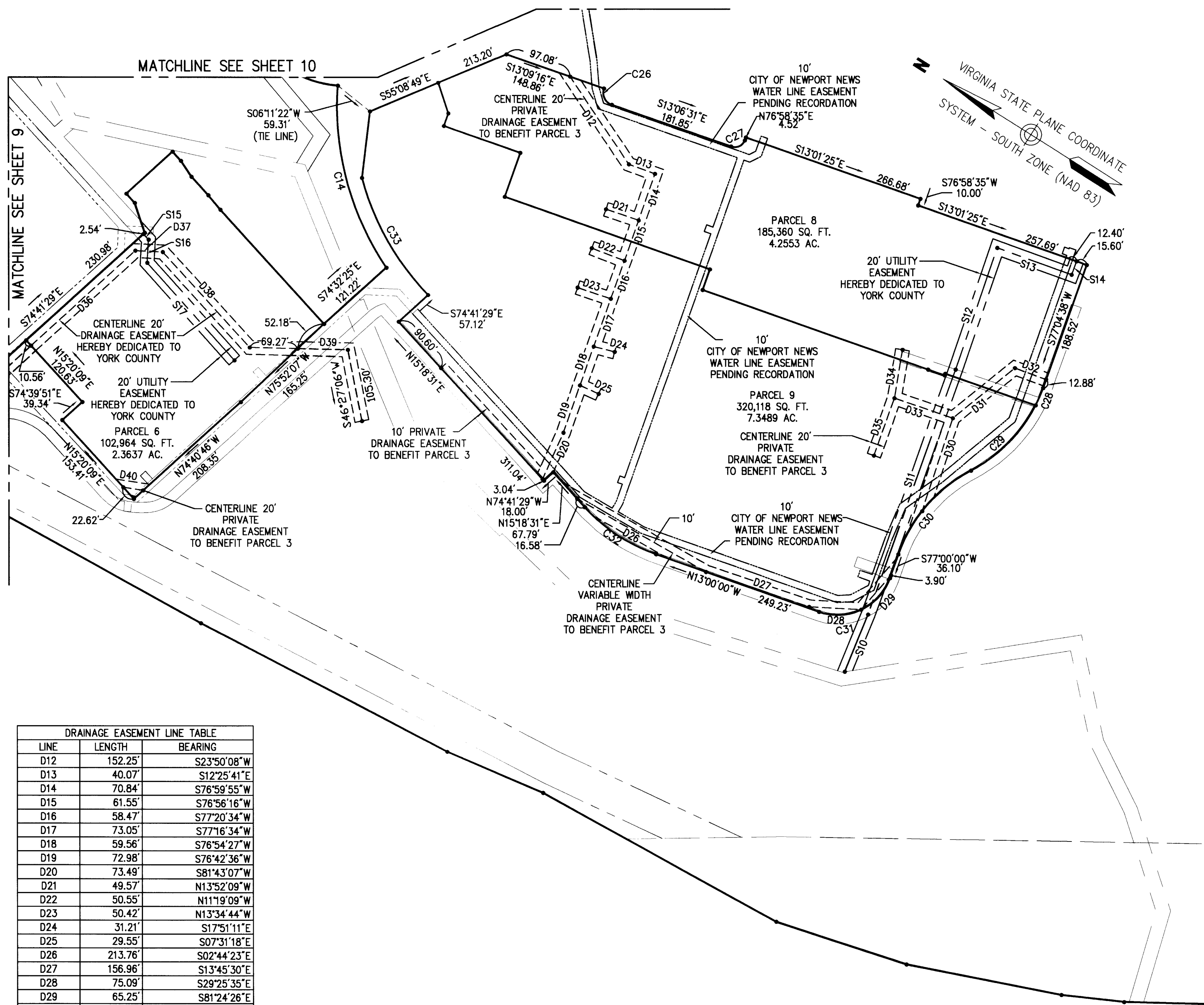


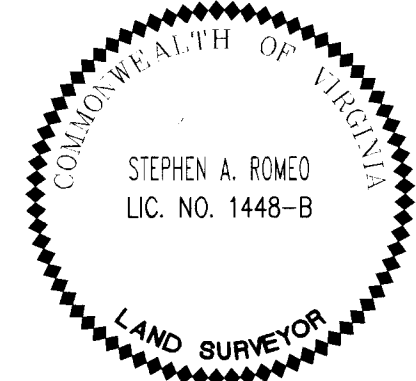
**SUBDIVISION
OF THE PROPERTY OF
MARQUIS WILLIAMSBURG
RE HOLDING LLC**

BRUTON DISTRICT, YORK COUNTY, VIRGINIA
DATE: 10/21/11 SCALE: 1"=100'
SHEET 11 OF 11



MATCHLINE SEE SHEET 9

MATCHLINE SEE SHEET 10



DRAINAGE EASEMENT LINE TABLE		
LINE	LENGTH	BEARING
D12	152.25'	S23°50'08"W
D13	40.07'	S12°25'41"E
D14	70.84'	S76°59'55"W
D15	61.55'	S76°56'16"W
D16	58.47'	S77°20'34"W
D17	73.05'	S77°16'34"W
D18	59.56'	S76°54'27"W
D19	72.98'	S76°42'36"W
D20	73.49'	S81°43'07"W
D21	49.57'	N13°52'09"W
D22	50.55'	N11°19'09"W
D23	50.42'	N13°34'44"W
D24	31.21'	S17°51'11"E
D25	29.55'	S07°31'18"E
D26	213.76'	S02°44'23"E
D27	156.96'	S13°45'30"E
D28	75.09'	S29°25'35"E
D29	65.25'	S81°24'26"E
D30	141.41'	N75°48'48"E
D31	115.58'	S71°36'36"E
D32	47.82'	S11°54'33"E
D33	89.14'	S13°09'53"E
D34	71.05'	S66°59'48"W
D35	88.56'	S77°04'05"W
D36	203.74'	S74°50'52"E
D37	39.60'	S29°41'29"E
D38	185.99'	S15°18'31"W
D39	141.58'	S31°07'17"E
D40	29.13'	S23°44'50"E

SANITARY SEWER EASEMENT LINE TABLE		
LINE	LENGTH	BEARING
S10	89.30'	N79°42'10"E
S11	375.98'	N77°10'52"E
S12	185.58'	N76°28'17"E
S13	114.02'	S12°27'04"E
S14	20.72'	N77°50'07"E
S15	10.95'	S15°00'55"W
S16	33.31'	S60°57'31"W
S17	188.60'	S15°50'28"W



Vanasse Hangen Brustlin, Inc.
Transportation Land Development Environmental Services
351 McLaws Circle, Suite 3
Williamsburg, Virginia 23185
(757) 220-0500 • FAX (757) 220-8544

APPROVED:
YORK COUNTY BOARD OF SUPERVISORS
BY: W. P. Addams
PLAT APPROVING AGENT
DATE: 1/19/12

STATE OF VIRGINIA, COUNTY OF YORK
IN THE CLERK'S OFFICE OF THE CIRCUIT COURT FOR THE
COUNTY OF YORK-POQUOSON THE 19th DAY OF
January 2012, THIS MAP WAS PRESENTED AND
ADMITTED TO RECORD AS THE LAW DIRECTS AS
INSTRUMENT NO. L.R. 12666 H.12
TESTE: Lynn S. Alexander
CLERK
BY: James S. Alexander

2012 JAN 19 09:49