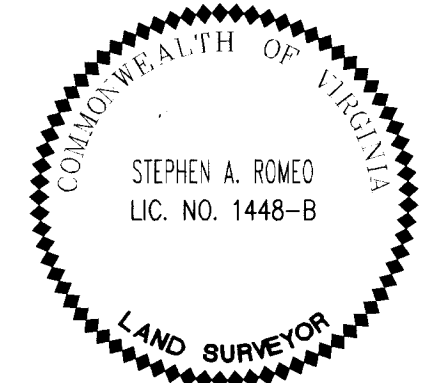
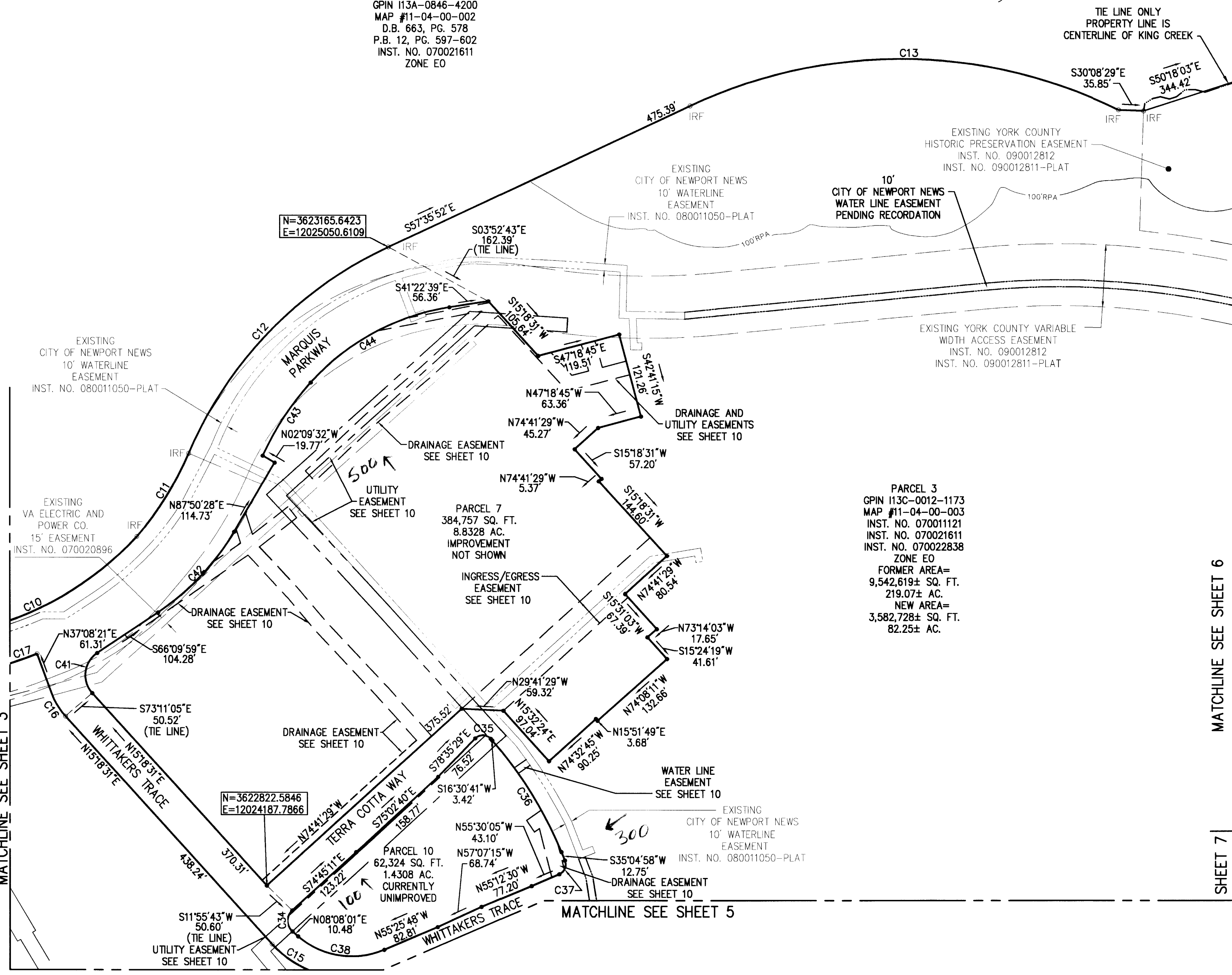
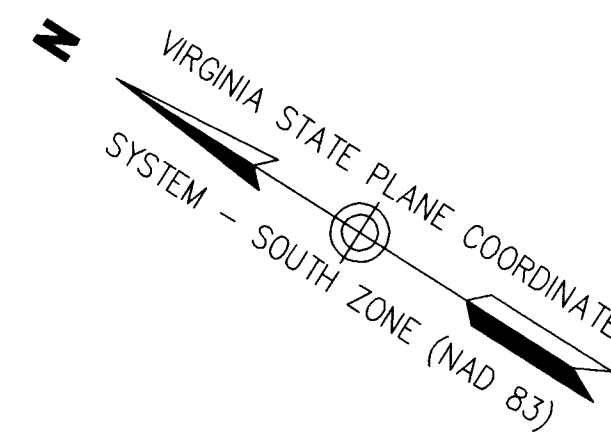


**SUBDIVISION
OF THE PROPERTY OF
MARQUIS WILLIAMSBURG
RE HOLDING LLC**

BRUTON DISTRICT, YORK COUNTY, VIRGINIA
DATE: 10/21/11 SCALE: 1"=100'
SHEET 4 OF 11

"WATER COUNTRY USA"
PARCEL 2
BUSCH ENTERTAINMENT CORP.
GPIN 113A-0846-4200
MAP #11-04-00-002
D.B. 663, PG. 578
P.B. 12, PG. 597-602
INST. NO. 070021611
ZONE EO



PARCEL 3
GPIN 113C-0012-1173
MAP #11-04-00-003
INST. NO. 070011121
INST. NO. 070021611
INST. NO. 070022838
ZONE EO
FORMER AREA=
9,542,619± SQ. FT.
219.07± AC.
NEW AREA=
3,582,728± SQ. FT.
82.25± AC.

MATCHLINE SEE SHEET 6



Vanasse Hangen Brustlin, Inc.
Transportation Land Development Environmental Services
351 McLaws Circle, Suite 3
Williamsburg, Virginia 23185
(757) 220-0500 • FAX (757) 220-8544

APPROVED:
YORK COUNTY BOARD OF SUPERVISORS
BY: *[Signature]*
PLAT APPROVING AGENT
DATE: 1/19/12

STATE OF VIRGINIA, COUNTY OF YORK
IN THE CLERK'S OFFICE OF THE CIRCUIT COURT FOR THE
COUNTY OF YORK-POQUOSON THE 19th DAY OF
January 2012, THIS MAP WAS PRESENTED AND
ADMITTED TO RECORD AS THE LAW DIRECTS AS
INSTRUMENT NO. LR 12000 1113
TESTE: LYNN S. MENDONIA
CLERK: *[Signature]* 11:47 AM
BY: *[Signature]*

MATCHLINE SEE SHEET 3

SHEET 7

MATCHLINE SEE SHEET 5

2012 JAN 19 AM 11:48