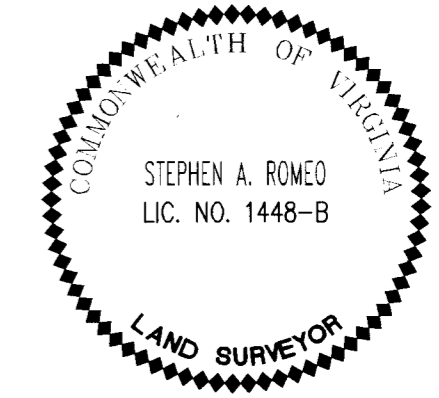
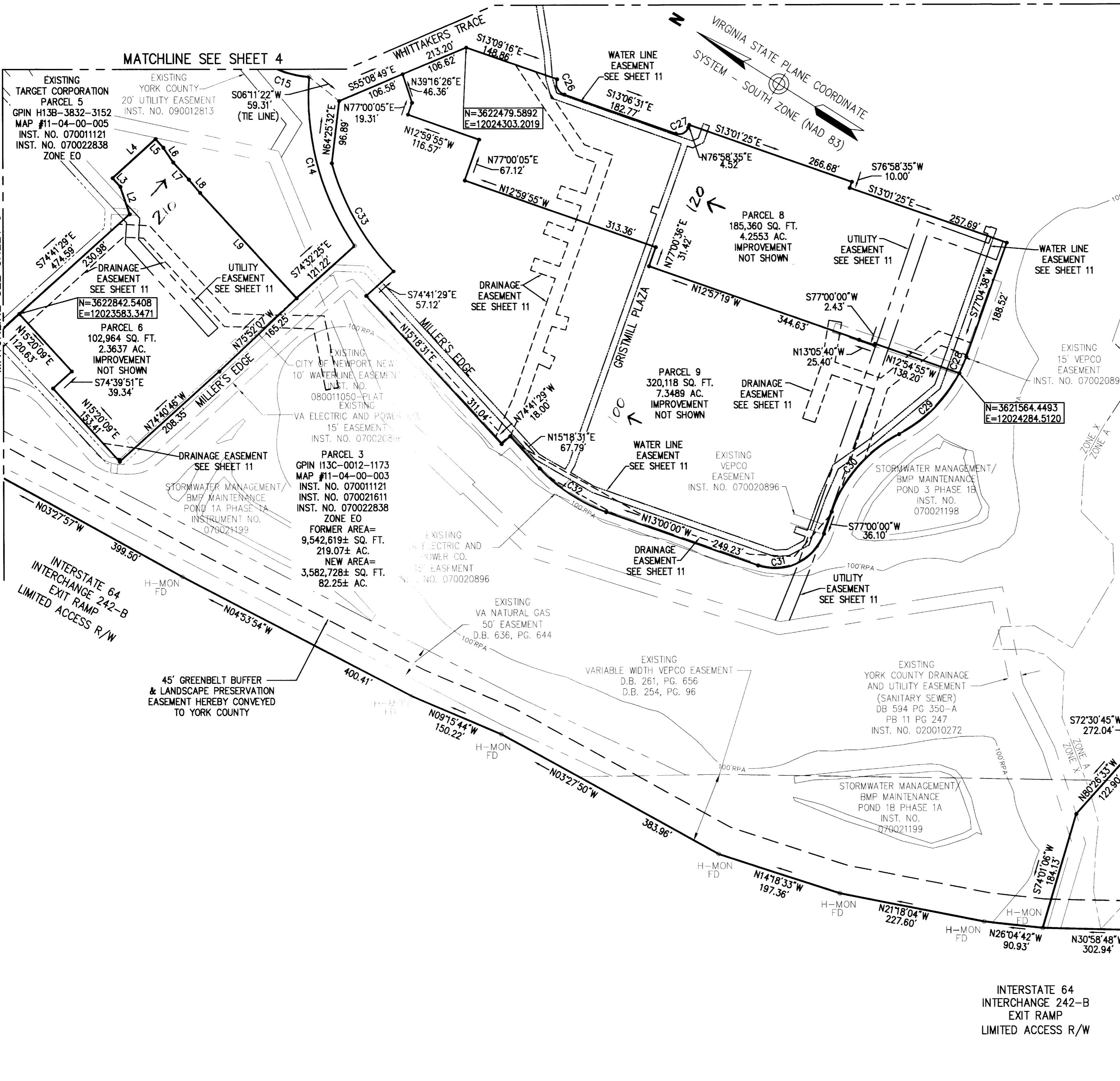


**SUBDIVISION
OF THE PROPERTY OF
MARQUIS WILLIAMSBURG
RE HOLDING LLC**

BRUTON DISTRICT, YORK COUNTY, VIRGINIA
DATE: 10/21/11 SCALE: 1"=100'
SHEET 5 OF 11

MATCHLINE SEE SHEET 3

MATCHLINE SEE SHEET 7



VHB
Vanasse Hangen Brustlin, Inc.
Transportation Land Development Environmental Services
351 McLaw Circle, Suite 3
Williamsburg, Virginia 23185
(757) 220-0500 • FAX (757) 220-8544

APPROVED:
YORK COUNTY BOARD OF SUPERVISORS
BY: *[Signature]*
PLAT APPROVING AGENT
DATE: 11/7/11

STATE OF VIRGINIA, COUNTY OF YORK
IN THE CLERK'S OFFICE OF THE CIRCUIT COURT FOR THE COUNTY OF YORK-POQUOSON THE 19th DAY OF ~~January~~ November, 2012, THIS MAP WAS PRESENTED AND ADMITTED TO RECORD AS THE LAW DIRECTS AS INSTRUMENT NO. L.R.120000112
TESTE: LYNN S. MEADWELL
CLERK
BY: *[Signature]*

INTERSTATE 64
INTERCHANGE 242-B
EXIT RAMP
LIMITED ACCESS R/W