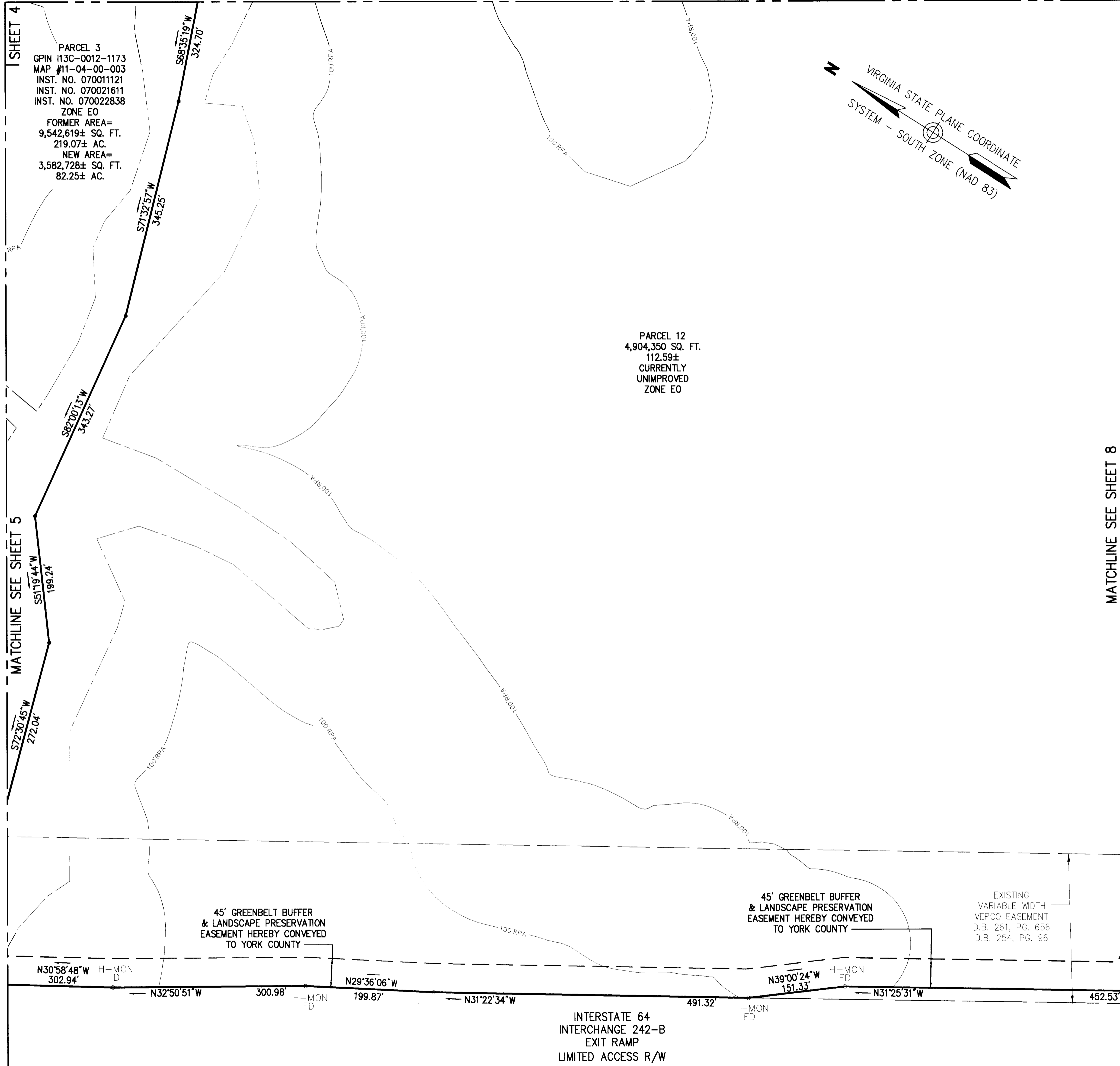
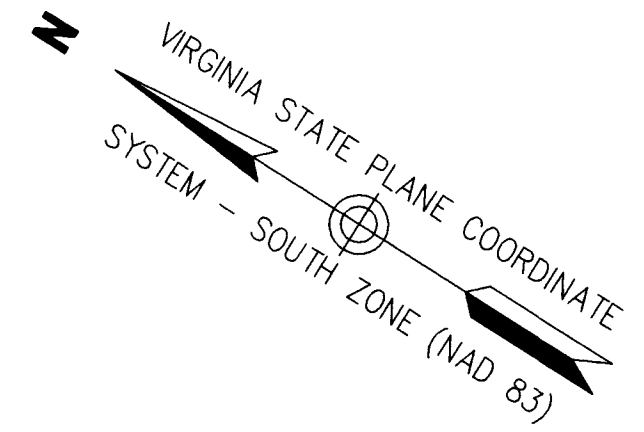


MATCHLINE SEE SHEET 6

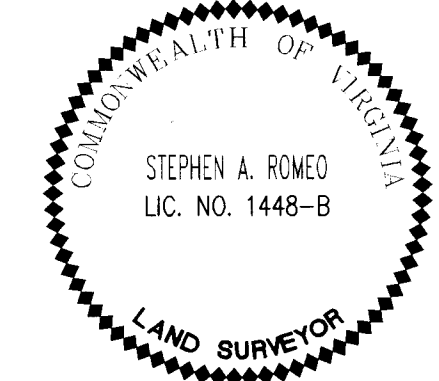


**SUBDIVISION
 OF THE PROPERTY OF
 MARQUIS WILLIAMSBURG
 RE HOLDING LLC**

BRUTON DISTRICT, YORK COUNTY, VIRGINIA
 DATE: 10/21/11 SCALE: 1"=100'
 SHEET 7 OF 11



MATCHLINE SEE SHEET 8



Vanasse Hangen Brustlin, Inc.
 Transportation Land Development Environmental Services
 351 McLaws Circle, Suite 3
 Williamsburg, Virginia 23185
 (757) 220-0500 • FAX (757) 220-8544

APPROVED:
 YORK COUNTY BOARD OF SUPERVISORS
 BY: [Signature]
 PLAT APPROVING AGENT
 DATE: 11/17/11

STATE OF VIRGINIA, COUNTY OF YORK
 IN THE CLERK'S OFFICE OF THE CIRCUIT COURT FOR THE
 COUNTY OF YORK-POQUOSON THE 17th DAY OF
November 2012, THIS MAP WAS PRESENTED AND
 ADMITTED TO RECORD AS THE LAW DIRECTS AS
 INSTRUMENT NO. 27-120001012
 TESTE: Lynn S. Hendrix
 CLERK: [Signature] 11:17 AM