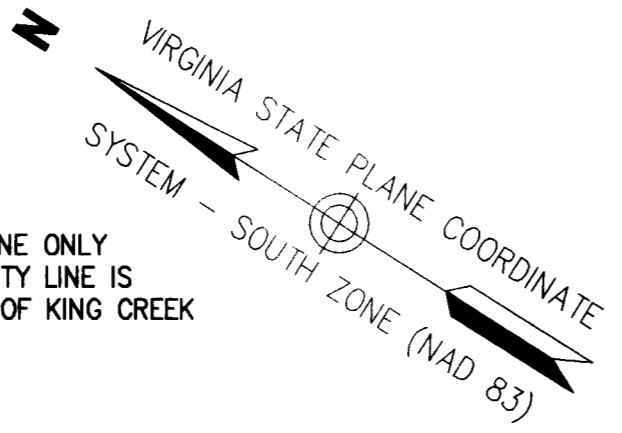


**SUBDIVISION
OF THE PROPERTY OF
MARQUIS WILLIAMSBURG
RE HOLDING LLC**

BRUTON DISTRICT, YORK COUNTY, VIRGINIA
DATE: 10/21/11 SCALE: 1"=100'
SHEET 8 OF 11



THE LINE ONLY
PROPERTY LINE IS
CENTERLINE OF KING CREEK

U.S. NAVAL MINE DEPOT
GPIN K12B-4637-4291
MAP #12-00-00-002
ZONE RC

U.S. NAVAL MINE DEPOT
GPIN K12B-4637-4291
MAP #12-00-00-002
ZONE RC

45' GREENBELT BUFFER
& LANDSCAPE PRESERVATION
EASEMENT HEREBY CONVEYED
TO YORK COUNTY

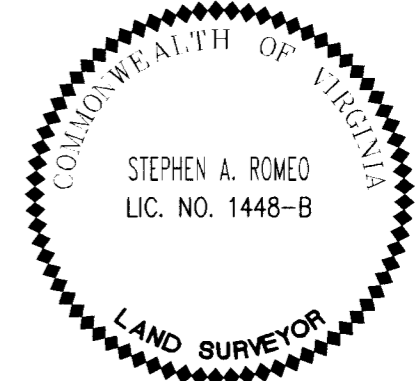
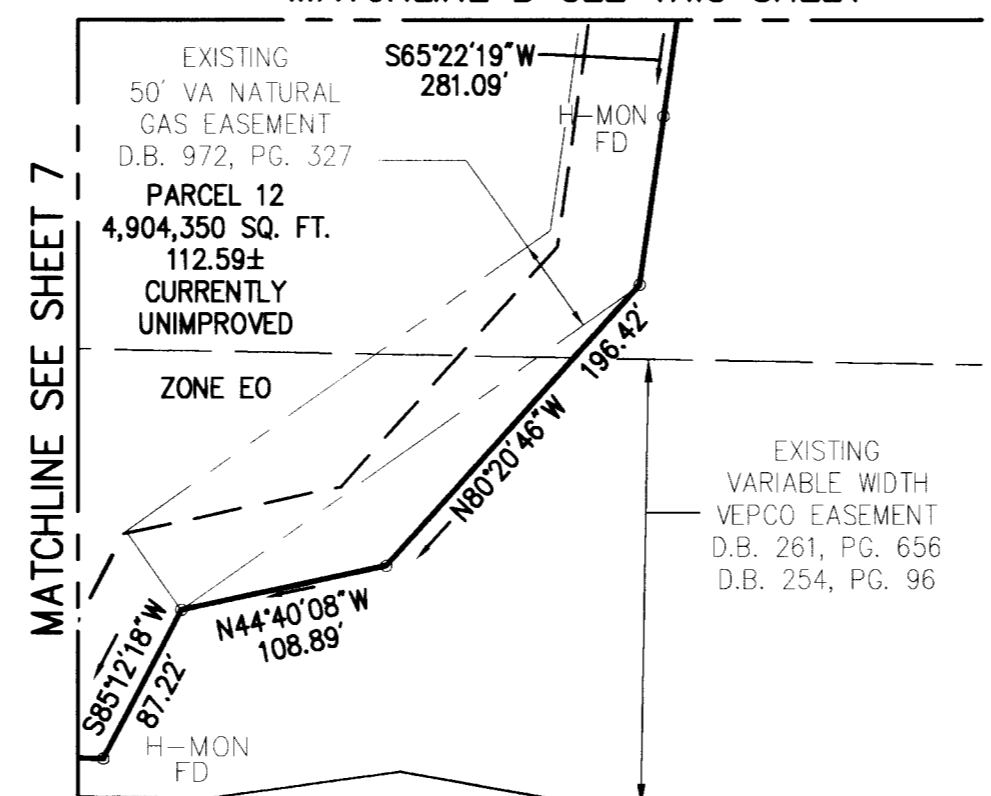
PARCEL 12
4,904,350 SQ. FT.
112.59±
CURRENTLY
UNIMPROVED
ZONE EO

PARCEL 12
4,904,350 SQ. FT.
112.59±
CURRENTLY
UNIMPROVED
ZONE EO

45' GREENBELT BUFFER
& LANDSCAPE PRESERVATION
EASEMENT HEREBY CONVEYED
TO YORK COUNTY

INTERSTATE 64
INTERCHANGE 243
ENTRANCE RAMP
LIMITED ACCESS R/W
VARIABLE WIDTH R/W

MATCHLINE B SEE THIS SHEET



Vanasse Hangen Brustlin, Inc.
Transportation Land Development Environmental Services
351 McLaws Circle, Suite 3
Williamsburg, Virginia 23185
(757) 220-0500 • FAX (757) 220-8544

APPROVED:
YORK COUNTY BOARD OF SUPERVISORS
BY: *[Signature]*
PLAT APPROVING AGENT
DATE: 1/19/12

STATE OF VIRGINIA, COUNTY OF YORK
IN THE CLERK'S OFFICE OF THE CIRCUIT COURT FOR THE COUNTY OF YORK-POQUOSON THE 19th DAY OF January 2012, THIS MAP WAS PRESENTED AND ADMITTED TO RECORD AS THE LAW DIRECTS AS INSTRUMENT NO. LR120000112
TESTE: *[Signature]*
CLERK
BY: *[Signature]*

SHEET 6

MATCHLINE SEE SHEET 7

MATCHLINE A SEE THIS SHEET

MATCHLINE A SEE THIS SHEET

MATCHLINE SEE SHEET 7

MATCHLINE B SEE THIS SHEET

2012 JAN 19 4:10:48