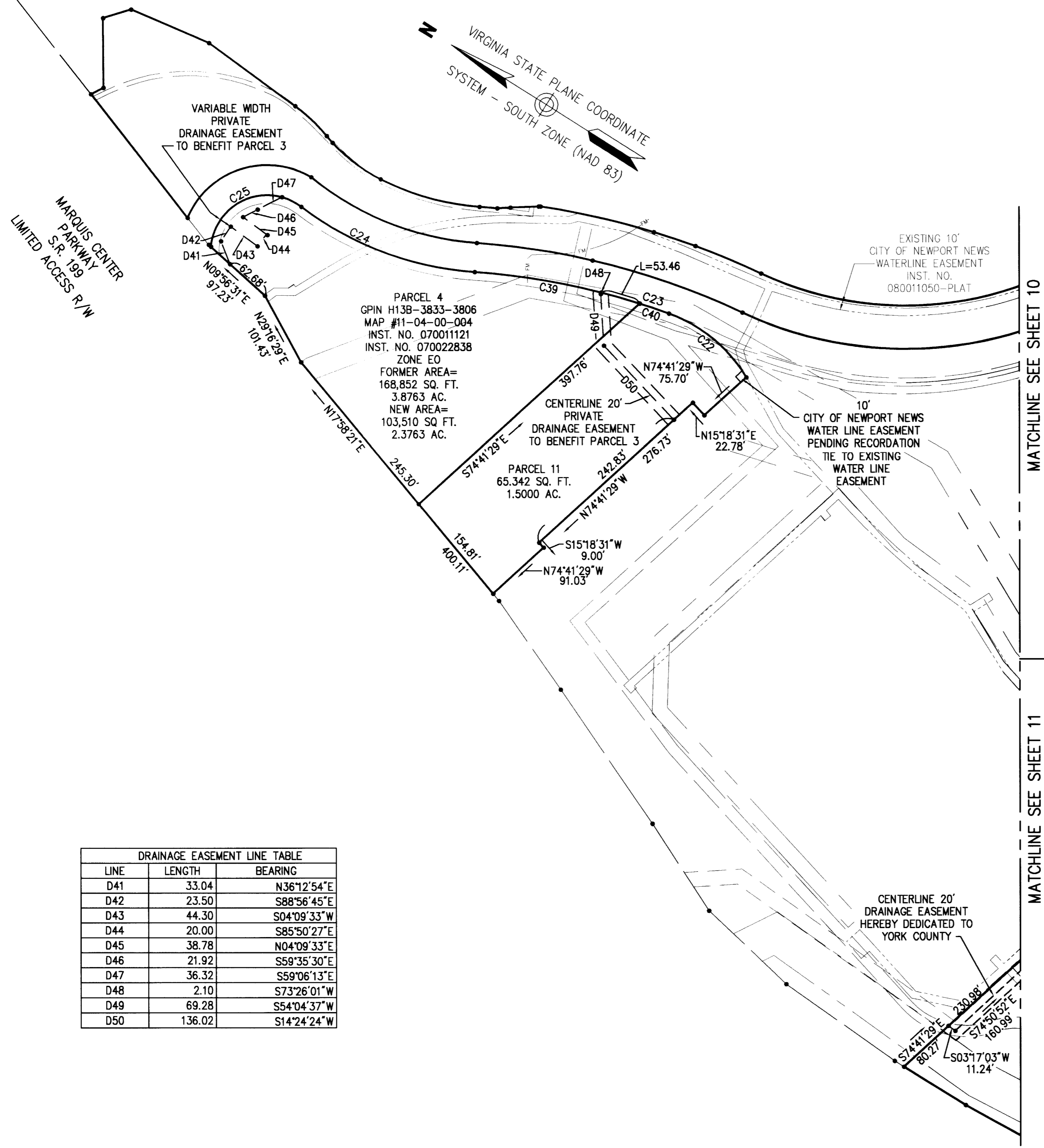


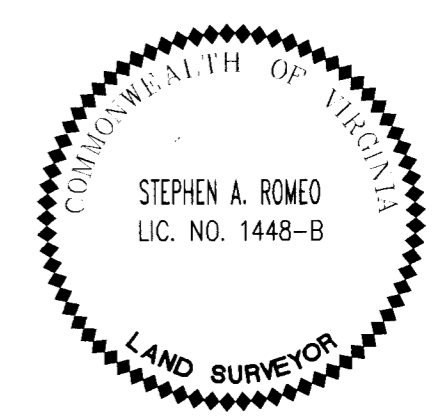
**SUBDIVISION
OF THE PROPERTY OF
MARQUIS WILLIAMSBURG
RE HOLDING LLC**

BRUTON DISTRICT, YORK COUNTY, VIRGINIA
DATE: 10/21/11 SCALE: 1"=100'
SHEET 9 OF 11



DRAINAGE EASEMENT LINE TABLE

LINE	LENGTH	BEARING
D41	33.04	N36°12'54"E
D42	23.50	S88°56'45"E
D43	44.30	S04°09'33"W
D44	20.00	S85°50'27"E
D45	38.78	N04°09'33"E
D46	21.92	S59°35'30"E
D47	36.32	S59°06'13"E
D48	2.10	S73°26'01"W
D49	69.28	S54°04'37"W
D50	136.02	S14°24'24"W



Vanasse Hangen Brustlin, Inc.
Transportation Land Development Environmental Services
351 McLaws Circle, Suite 3
Williamsburg, Virginia 23185
(757) 220-0500 • FAX (757) 220-8544

APPROVED:
YORK COUNTY BOARD OF SUPERVISORS
BY: *[Signature]*
PLAT, APPROVING AGENT
DATE: 10/19/11

STATE OF VIRGINIA, COUNTY OF YORK
IN THE CLERK'S OFFICE OF THE CIRCUIT COURT FOR THE COUNTY OF YORK-POQUOSON THE 19th DAY OF *November* 2012, THIS MAP WAS PRESENTED AND ADMITTED TO RECORD AS THE LAW DIRECTS AS INSTRUMENT NO. *L.R. 12000 10 12*
TESTE: *Laura S. Mendibara*
CLERK.
BY: *[Signature]*

2012 JUN 19 10:47 AM