

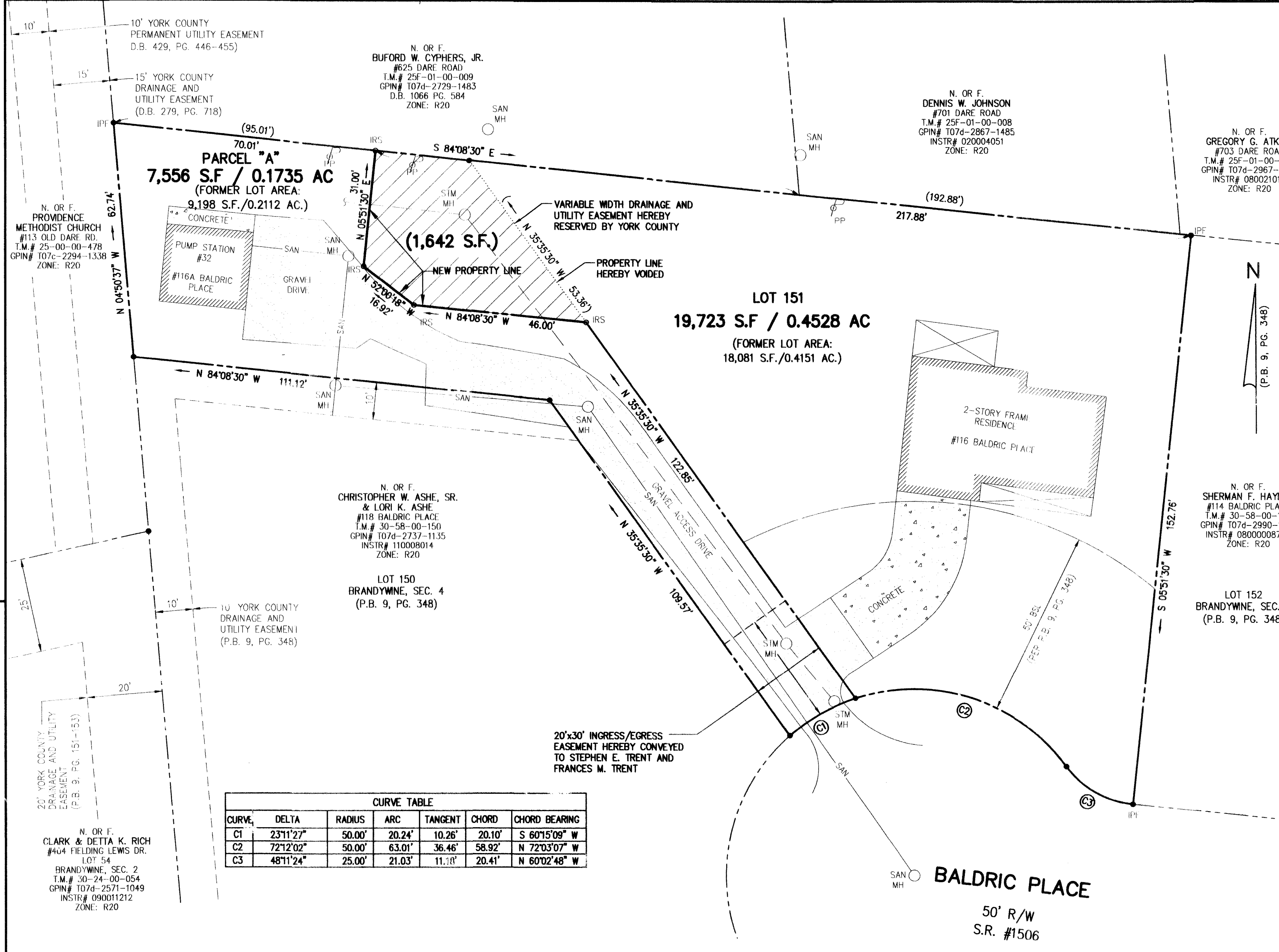
**BOUNDARY LINE ADJUSTMENT
BETWEEN THE PROPERTIES OWNED BY
STEPHEN E. AND FRANCES M. TRENT
AND COUNTY OF YORK**

**GRAFTON DISTRICT
YORK COUNTY, VIRGINIA**

OCTOBER 20, 2011 SCALE: 1"=20'

CAMPBELL LAND SURVEYING, INC.
P.O. BOX 855
YORKTOWN, VIRGINIA 23692
(757) 890-0837

SHEET 2 OF 2



CURVE TABLE						
CURVE	DELTA	RADIUS	ARC	TANGENT	CHORD	CHORD BEARING
C1	23°11'27"	50.00'	20.24'	10.26'	20.10'	S 60°15'09" W
C2	72°12'02"	50.00'	63.01'	36.46'	58.92'	N 72°03'07" W
C3	48°11'24"	25.00'	21.03'	11.10'	20.41'	N 60°02'48" W

TOTAL AREA OF BOUNDARY LINE ADJUSTMENT:
27,279 S.F. / 0.6262 AC.

	ORIGINAL AREA	NEW AREA
LOT 151	18,081 S.F./0.4151 AC	19,723 S.F./0.4528 AC
PARCEL A	9,198 S.F./0.2112 AC	7,556 S.F./0.1735 AC.

- LEGEND**
- PROPERTY LINE
 - IRON PIPE/ROD FOUND
 - IRON ROD SET
 - - - BUILDING SETBACK LINE
 - - - PROPOSED PRIVATE DRAINAGE AND/OR UTILITY EASEMENT

APPROVED

YORK COUNTY BOARD OF SUPERVISORS

BY: W. Maddalena
PLAT APPROVING AGENT

DATE: 7/11/12

STATE OF VIRGINIA
COUNTY OF YORK

IN THE CLERK'S OFFICE OF THE CIRCUIT COURT FOR THE COUNTY OF YORK-POQUOSON, THIS 12th DAY OF July 2012, THIS MAP WAS PRESENTED AND ADMITTED TO RECORD AS THE LAW DIRECTS, AS INSTRUMENT NUMBER LR20111485

TESTE: Lynn S. Mendibur
CLERK

BY: Calvin Lynn Baldwin, Jr.