

SUBDIVISION PLAT OF RIVERWALK TOWNES PHASE V-C

SHEET 2 OF 3

NELSON DISTRICT YORK COUNTY VIRGINIA

Date: 7-20-12 Scale: 1"=100' Proj. No.: W09875-05-C Proj. Contacts: TCS / CMA

REV.: 9-18-12



6248 Old Towne Road, Suite 1
Williamsburg, Virginia 23188
Phone: (757) 253-0040
Fax: (757) 220-8994
www.aesva.com

CONSULTING ENGINEERS

Hampton Roads | Central Virginia | Middle Peninsula

GRAPHIC SCALE

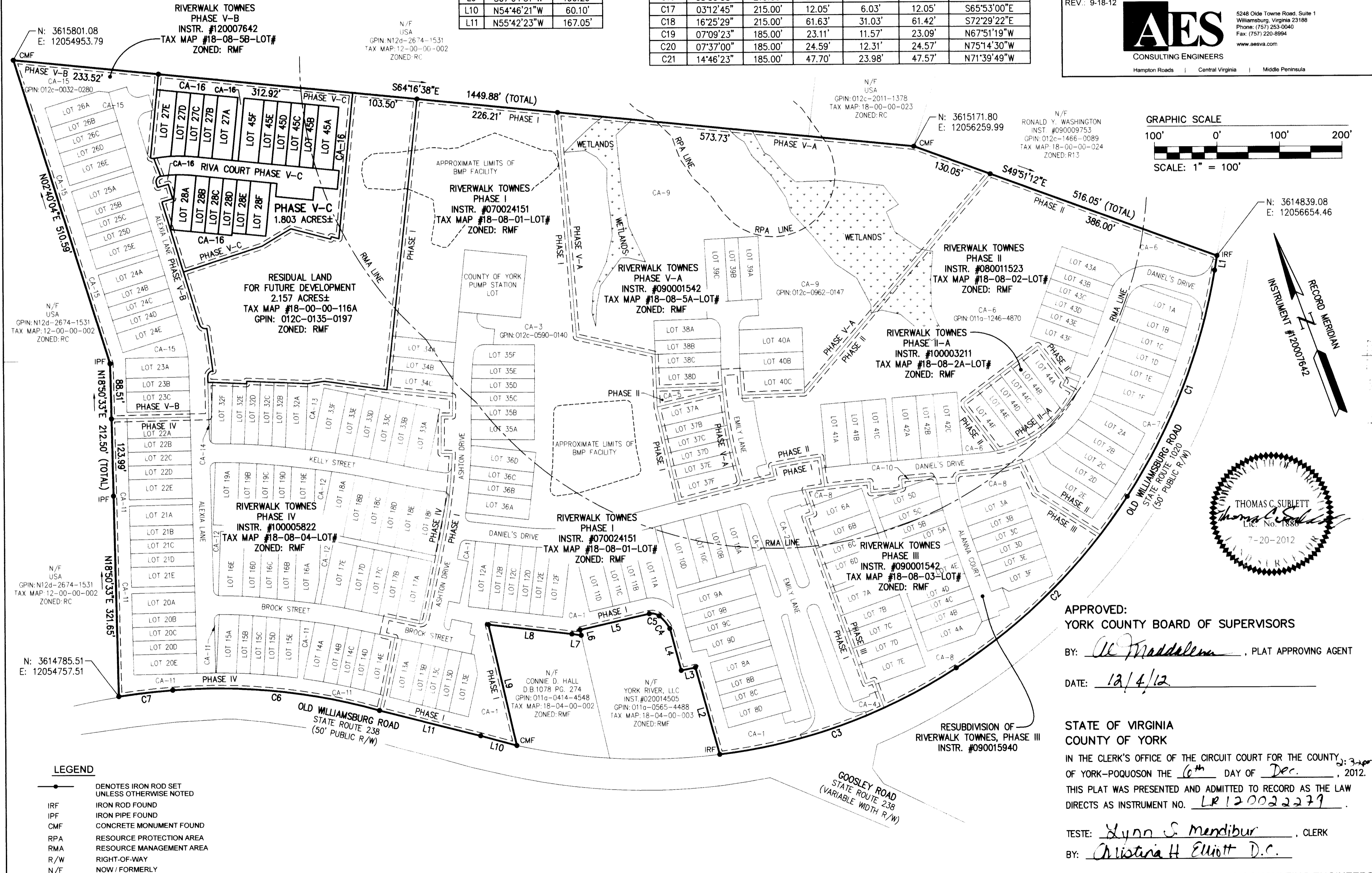


SCALE: 1" = 100'

CURVE	DELTA	RADIUS	LENGTH	TANGENT	CHORD	CHORD BEARING
C1	23°32'22"	954.16'	392.01'	198.81'	389.26'	S41°23'55"W
C2	23°58'17"	934.51'	390.98'	198.39'	388.13'	S65°09'15"W
C3	26°08'52"	893.01'	407.54'	207.38'	404.01'	N89°47'10"W
C4	22°47'21"	67.32'	26.78'	13.57'	26.60'	N19°50'33"W
C5	51°40'06"	18.63'	16.80'	9.02'	16.24'	N57°04'58"W
C6	20°17'00"	945.69'	334.79'	169.16'	333.04'	N64°07'48"W
C7	04°22'00"	1143.20'	87.13'	43.58'	87.11'	N76°27'18"W

LINE	BEARING	LENGTH
L1	S29°37'44"W	23.74'
L2	N04°42'08"E	144.77'
L3	N81°41'21"W	23.14'
L4	N05°02'50"E	69.61'
L5	N82°54'20"W	114.11'
L6	S07°16'14"W	8.90'
L7	N62°04'33"W	15.17'
L8	N63°12'49"W	134.69'
L9	S07°04'51"W	199.26'
L10	N54°46'21"W	60.10'
L11	N55°42'23"W	167.05'

CURVE	DELTA	RADIUS	LENGTH	TANGENT	CHORD	CHORD BEARING
C8	81°14'54"	9.00'	12.76'	7.72'	11.72'	N59°25'22"E
C9	96°50'15"	1.00'	1.69'	1.13'	1.50'	S31°32'03"E
C10	91°15'31"	9.00'	14.33'	9.20'	12.87'	N42°21'17"W
C11	90°00'00"	1.00'	1.57'	1.00'	1.41'	N48°16'28"E
C12	90°00'00"	1.00'	1.57'	1.00'	1.41'	N41°43'32"W
C13	97°40'32"	9.00'	15.34'	10.29'	13.55'	N52°06'44"E
C14	35°30'03"	9.00'	5.58'	2.88'	5.49'	N62°57'05"W
C15	07°18'46"	215.00'	27.44'	13.74'	27.42'	S77°02'43"E
C16	05°53'58"	215.00'	22.14'	11.08'	22.13'	S70°26'22"E
C17	03°12'45"	215.00'	12.05'	6.03'	12.05'	S65°53'00"E
C18	16°25'29"	215.00'	61.63'	31.03'	61.42'	S72°29'22"E
C19	07°09'23"	185.00'	23.11'	11.57'	23.09'	N67°51'19"W
C20	07°37'00"	185.00'	24.59'	12.31'	24.57'	N75°14'30"W
C21	14°46'23"	185.00'	47.70'	23.98'	47.57'	N71°39'49"W



APPROVED: YORK COUNTY BOARD OF SUPERVISORS

BY: *Al Maddalena*, PLAT APPROVING AGENT

DATE: 12/4/12

STATE OF VIRGINIA COUNTY OF YORK

IN THE CLERK'S OFFICE OF THE CIRCUIT COURT FOR THE COUNTY OF YORK-POQUOSON THE 6th DAY OF Dec., 2012.

THIS PLAT WAS PRESENTED AND ADMITTED TO RECORD AS THE LAW DIRECTS AS INSTRUMENT NO. LR 120022279

TESTE: *Lynn S. Mendibur*, CLERK

BY: *Christina H. Elliott D.C.*