

Design File: 0603-099-141-502-01 Date: 07/17/97
 Ref. File: 0603-099-141-502-01 Date: 07/17/97
 65
 Level On: 143
 Level On: 143
 Level On: 143
 Level On: 143
 Level On: 143
 Level On: 143

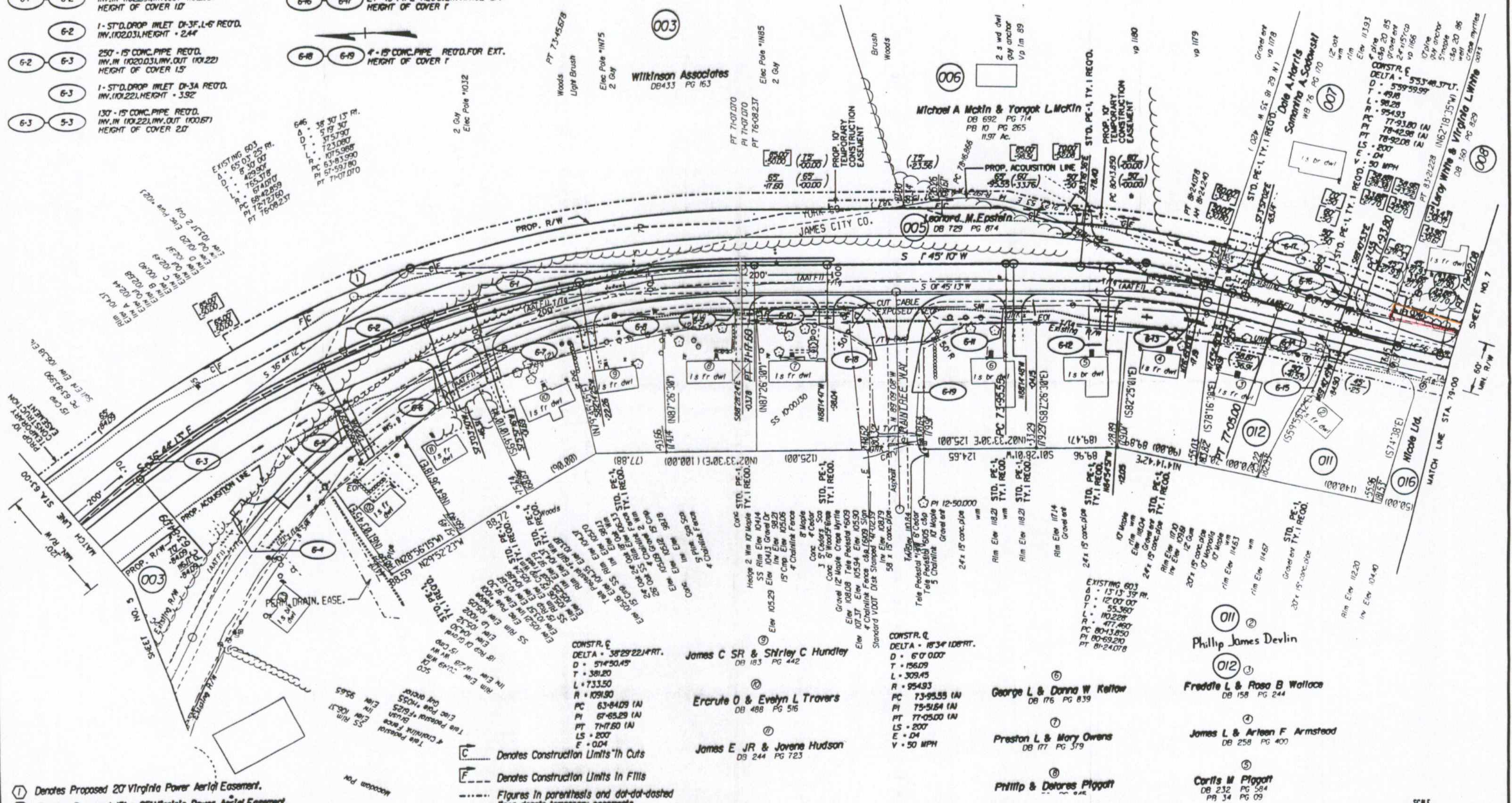
SUFFOLK DISTRICT DESIGN UNIT

- 6-1 1- STD. DROP INLET D-38.1-6 REOD. INV. (102.54), HEIGHT = 2.4'
- 6-2 150' - 15" CONC. PIPE REOD. INV. IN (102.59), INV. OUT (102.03) HEIGHT OF COVER 10'
- 6-3 1- STD. DROP INLET D-3F.1-6 REOD. INV. (102.03), HEIGHT = 2.4'
- 6-4 250' - 15" CONC. PIPE REOD. INV. IN (102.03), INV. OUT (101.22) HEIGHT OF COVER 15'
- 6-5 1- STD. DROP INLET D-3A REOD. INV. IN (101.22), HEIGHT = 3.92'
- 6-6 130' - 15" CONC. PIPE REOD. INV. IN (101.22), INV. OUT (100.67) HEIGHT OF COVER 20'

- 6-4 6-5 24' - 15" PIPE REOD. ENTRANCE RT. HEIGHT OF COVER 1'
- 6-6 6-7 24' - 15" PIPE REOD. ENTRANCE LT. HEIGHT OF COVER 1'
- 6-8 6-9 4' - 15" CONC. PIPE REOD. FOR EXT. HEIGHT OF COVER 1'

REVISED	FIRM REGION	STATE	FEDERAL AID PROJECT	ROUTE	STATE PROJECT	WTI NO.
04/21/97 07/17/97		VA		603	0603-099-141, C-503	6

DESIGN FEATURES RELATING TO CONSTRUCTION OR TO REGULATION AND CONTROL OF TRAFFIC MAY BE SUBJECT TO CHANGE AS DEEMED NECESSARY BY THE DEPARTMENT



SUPERVISED BY: E. N. HOLLOWELL, (757) 925-2558
 DESIGNED BY: B. T. SCOTT, JR.
 CAD OPERATOR: B. HARRIS, JR.
 REVISIONS BY:

- ① Denotes Proposed 20' Virginia Power Aerial Easement.
- ② Denotes Proposed 15' x 25' Virginia Power Aerial Easement.
- ③ Denotes Proposed 10' Bell-Atlantic Underground Easement.
- ④ Denotes Proposed Temporary Construction Easement.

- C Denotes Construction Limits 'th Cuts
- F Denotes Construction Limits In Fills
- Figures in parenthesis and dot-dash lines denote temporary easements.
- Figures in brackets and dot-dash lines denote permanent easements.

Existing Right of Way acquired previously under Proj. 0603-099-141, M-502 & 0603-099-173, M-501

DENOTES ROCK CHECK DAM TY II
 DENOTES OLD ROAD TO BE OBSOURED

