

SUFFOLK DISTRICT DESIGN

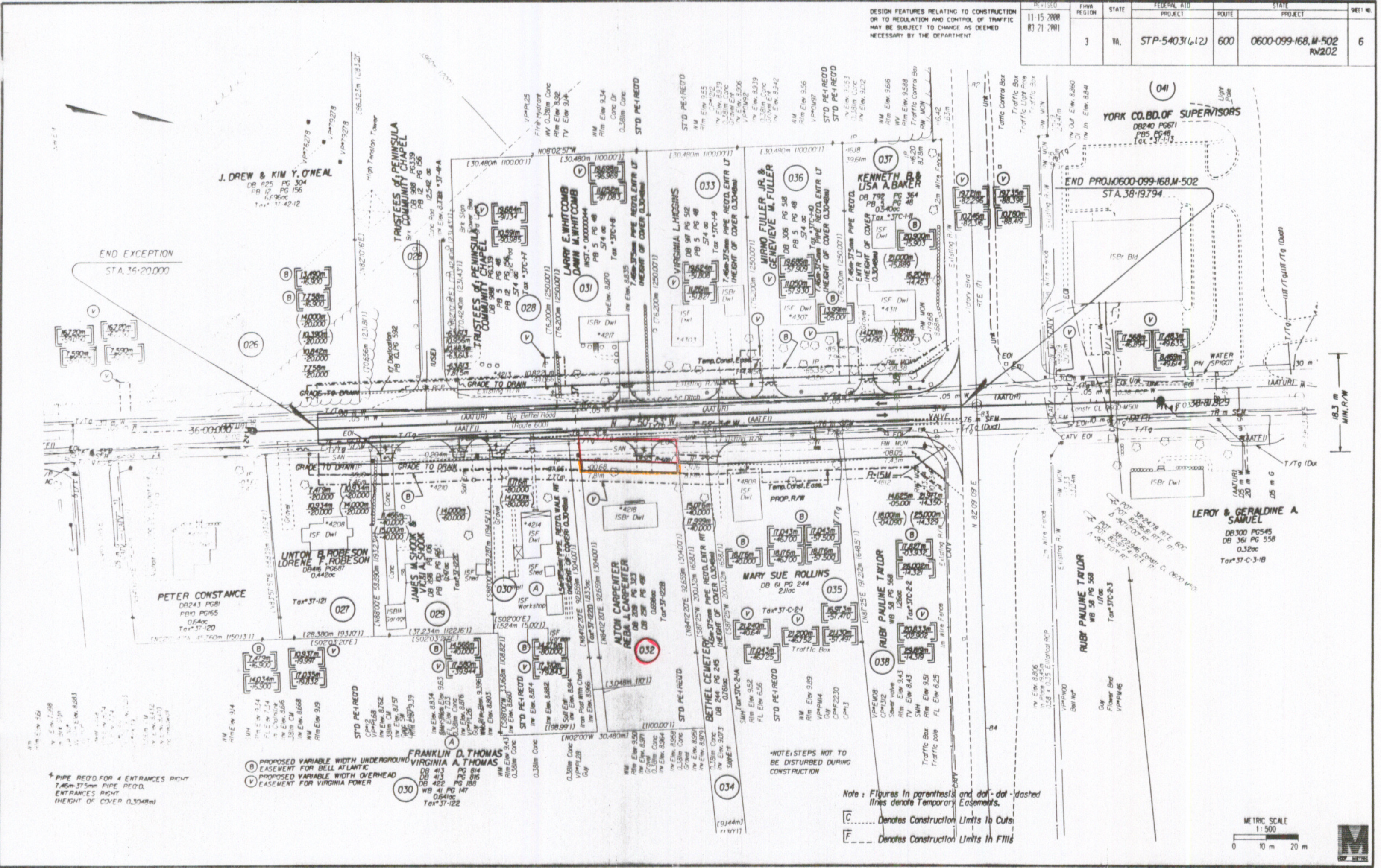
SURVEYED BY: A. G. BARTLETT 6000 (797) 985-1508  
 DESIGNED BY: G. A. BARTON (797) 985-3600  
 CAD OPERATOR: G. BARTON  
 REVISED BY: G. BARTON

37

38

DESIGN FEATURES RELATING TO CONSTRUCTION OR TO REGULATION AND CONTROL OF TRAFFIC MAY BE SUBJECT TO CHANGE AS DEEMED NECESSARY BY THE DEPARTMENT

REVISION	FHWA REGION	STATE	FEDERAL AID PROJECT	ROUTE	STATE PROJECT	SHEET NO.
11-15-2000 03-21-2001	3	VA	STP-5403(612)	600	0600-099-168, M-502 RW202	6



YORK CO. BD. OF SUPERVISORS  
 DB240 PG571  
 DB5 PG48  
 Tax 37-113

END PROJ. 0600-099-168, M-502  
 STA. 38+19.794

LEROY & GERALDINE A. SAMUEL  
 DB300 PG545  
 DB361 PG558  
 0.32ac  
 Tax 37-C-3-B

RUBY PAULINE TAYLOR  
 WB 58 PG 568  
 1/17ac  
 Tax 37-C-2-3

RUBY PAULINE TAYLOR  
 WB 58 PG 568  
 1/17ac  
 Tax 37-C-2-2

MARY SUE ROLLINS  
 DB 61 PG 244  
 2/1ac  
 Tax 37-C-2-1

AUTON CARPENTER  
 REBA J. CARPENTER  
 DB 258 PG 303  
 DB 259 PG 48  
 0.698ac  
 Tax 37-62B

FRANKLIN D. THOMAS  
 VIRGINIA A. THOMAS  
 DB 413 PG 84  
 DB 422 PG 188  
 WB 41 PG 147  
 0.641ac  
 Tax 37-122

PETER CONSTANCE  
 DB243 PG81  
 PBO PG655  
 0.64ac  
 Tax 37-120

LUNTON B. ROBESON  
 LORENE F. ROBESON  
 DB446 PG687  
 0.442ac

J. DREW & KIM Y. O'NEAL  
 DB 825 PG 304  
 PB 12 PG 156  
 1/29ac  
 Tax 37-42-12

TRUSTEES OF PENINSULA  
 COMMUNITY CHAPEL  
 DB 588 PG339  
 PB 12 PG 156  
 1/29ac

LARRY E. WHITCOMB  
 DARIN M. WHITCOMB  
 INST. 000000044  
 DB 508 PG 48  
 PB 5 PG 48  
 PB 12 PG 156  
 5/74 ac  
 Tax 37C-18

VIRGINIA L. HIGGINS  
 DB 97 PG 512  
 PB 5 PG 48  
 5/74 ac

MIRNO FULLER JR. &  
 GENIEVE W. FULLER  
 DB 306 PG 58  
 PB 5 PG 48  
 5/74 ac

KENNETH B. &  
 USA A. BAKER  
 DB 792 PG 364  
 PB 3 PG 48  
 0.540ac  
 Tax 37C-11