

Design File - /home/as_pld/asn/1079804.dgn
Design Levels on - 1:50,52-63

Ref. File - mref_10798040798.dgn
Levels On - 1:63

Ref. File - MREF_HIC0798040798_4.dgn
Levels On - 1:63

Ref. File - 1079803.dgn
Levels On - 1:50,52-59,61-63

Ref. File - 1079805.dgn
Levels On - 1:50,52-63

Ref. File - 10798.dgn
Levels On - 1:50,52-63

Ref. File - cfm1ts.dgn
Levels On - 1:63

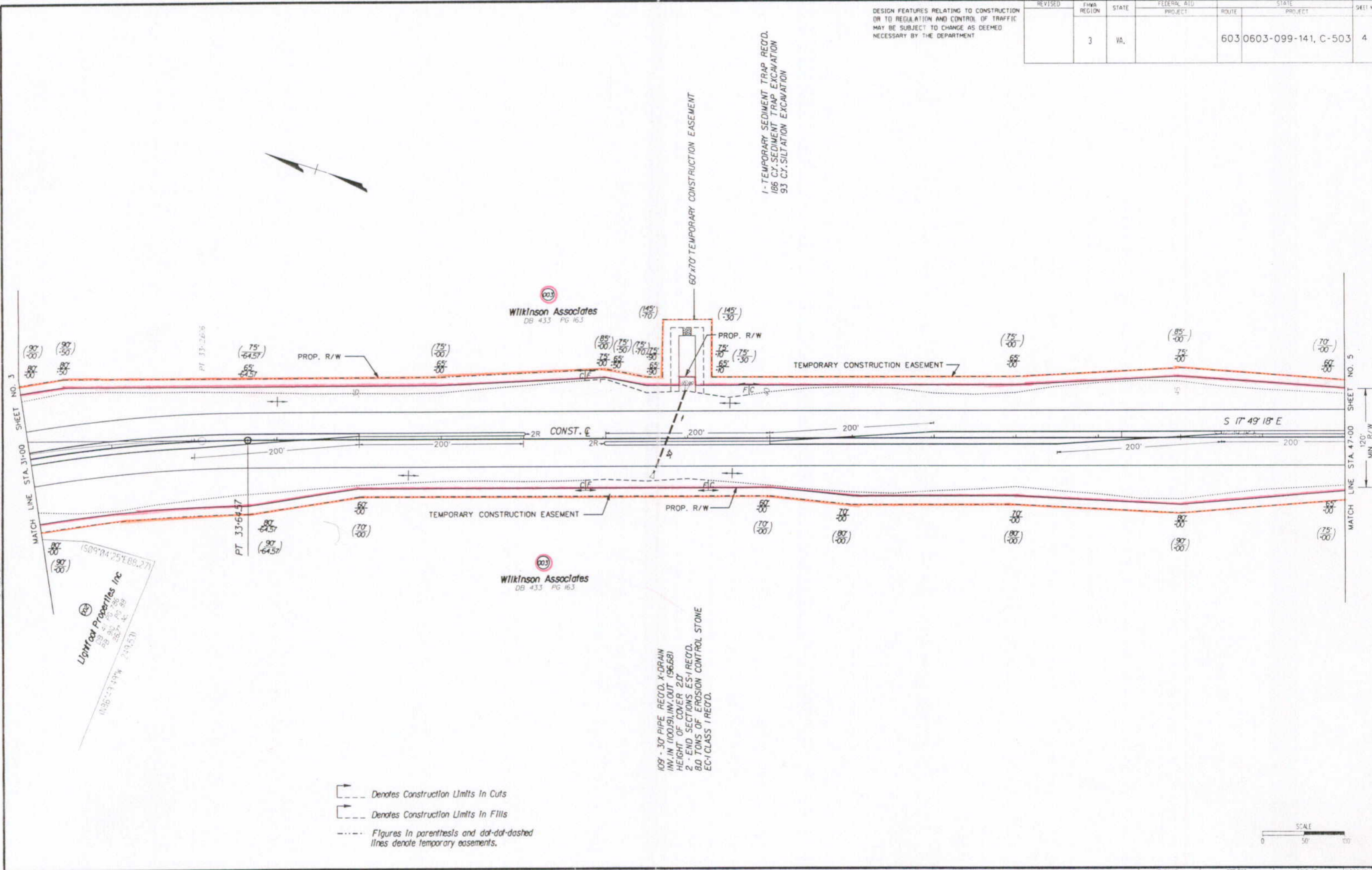
45

DESIGN FEATURES RELATING TO CONSTRUCTION OR TO REGULATION AND CONTROL OF TRAFFIC MAY BE SUBJECT TO CHANGE AS DEEMED NECESSARY BY THE DEPARTMENT

REVISED	FYMA REGION	STATE	FEDERAL AID PROJECT	ROUTE	STATE PROJECT	SHEET NO.
	3	VA.		603	0603-099-141, C-503	4

SUFFOLK DISTRICT DESIGN UNIT

SURVEYED BY - E. N. HOLLOWELL
SUPERVISED BY - R. J. SCOTT, JR. (757) 925-2558
DESIGNED BY - R. J. SCOTT, JR.
CADD OPERATOR - P. B. MARSHALL
REVISED BY -



- Denotes Construction Limits In Cuts
- Denotes Construction Limits In Fills
- Figures in parentheses and dot-dash lines denote temporary easements.

