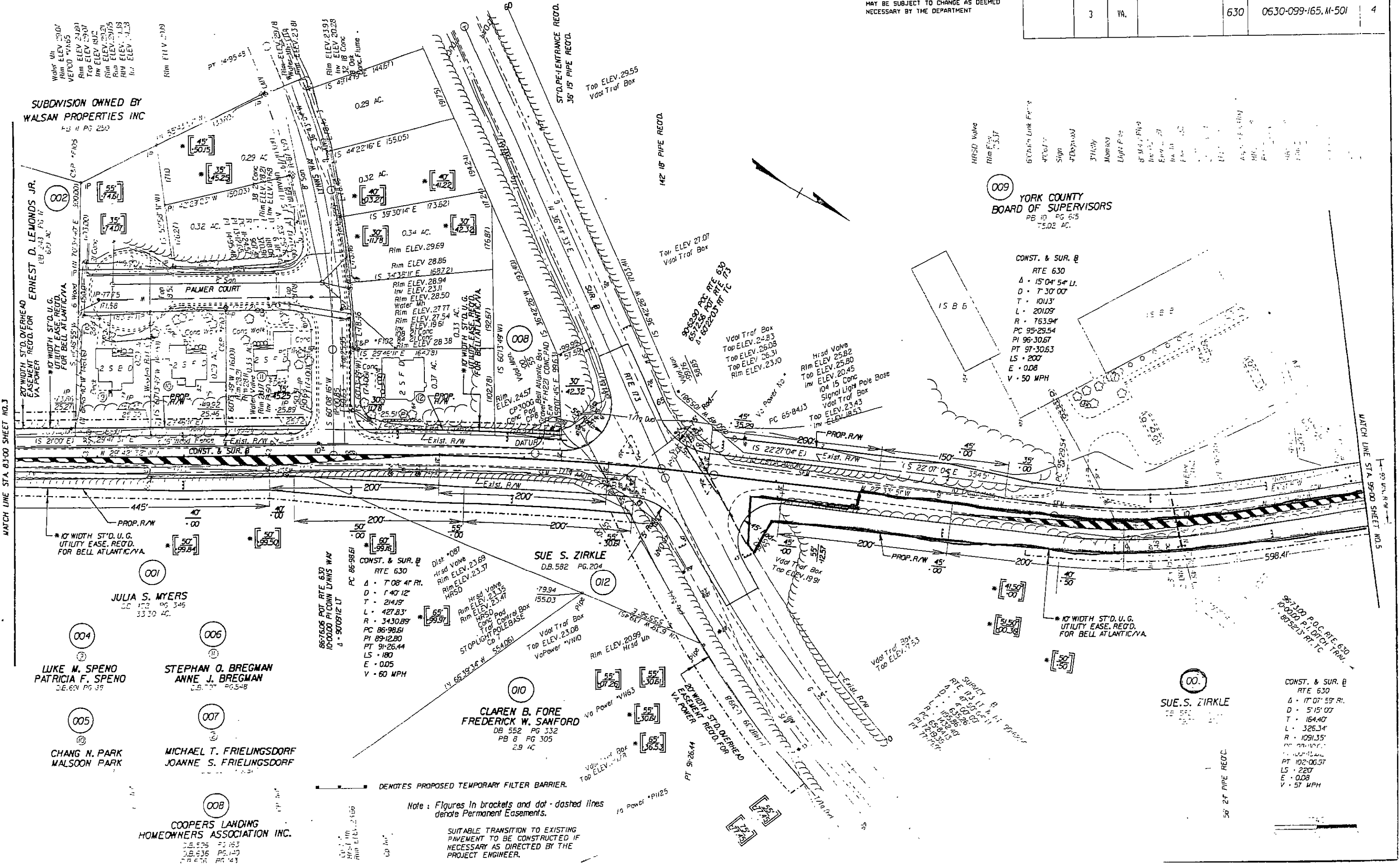


DESIGN FEATURES RELATING TO CONSTRUCTION OR TO REGULATION AND CONTROL OF TRAFFIC MAY BE SUBJECT TO CHANGE AS DEEMED NECESSARY BY THE DEPARTMENT

REVISED 01-30-97	FHYA REGION 3	STATE VA.	FEDERAL ID 630	ROUTE 630	STATE PROJECT 0630-099-165, M-501	SHEET NO. 4
---------------------	------------------	--------------	-------------------	--------------	--------------------------------------	----------------



009 YORK COUNTY BOARD OF SUPERVISORS
PB 10 PG 65
75.02 AC.

CONST. & SUR. @
RTE 630
Δ - 15' 04" 54" LI.
D - 7' 30" 00"
T - 10113'
L - 20109'
R - 763.94'
PC 95-29.54
PI 96-30.67
PT 97-30.63
LS - 200'
E - 0.08
V - 50 MPH

CONST. & SUR. @
RTE 630
Δ - 17' 01" 59" RI.
D - 5' 15" 00"
T - 164.40'
L - 326.34'
R - 1091.35'
PC 102-06.57
PT 102-06.57
LS - 220'
E - 0.08
V - 57 MPH

Note: Figures in brackets and dot-dashed lines denote Permanent Easements.

SUITABLE TRANSITION TO EXISTING PAVEMENT TO BE CONSTRUCTED IF NECESSARY AS DIRECTED BY THE PROJECT ENGINEER.

DENOTES PROPOSED TEMPORARY FILTER BARRIER.

MATCH LINE STA. 83+00 SHEET NO. 3

MATCH LINE STA. 96+00 SHEET NO. 5